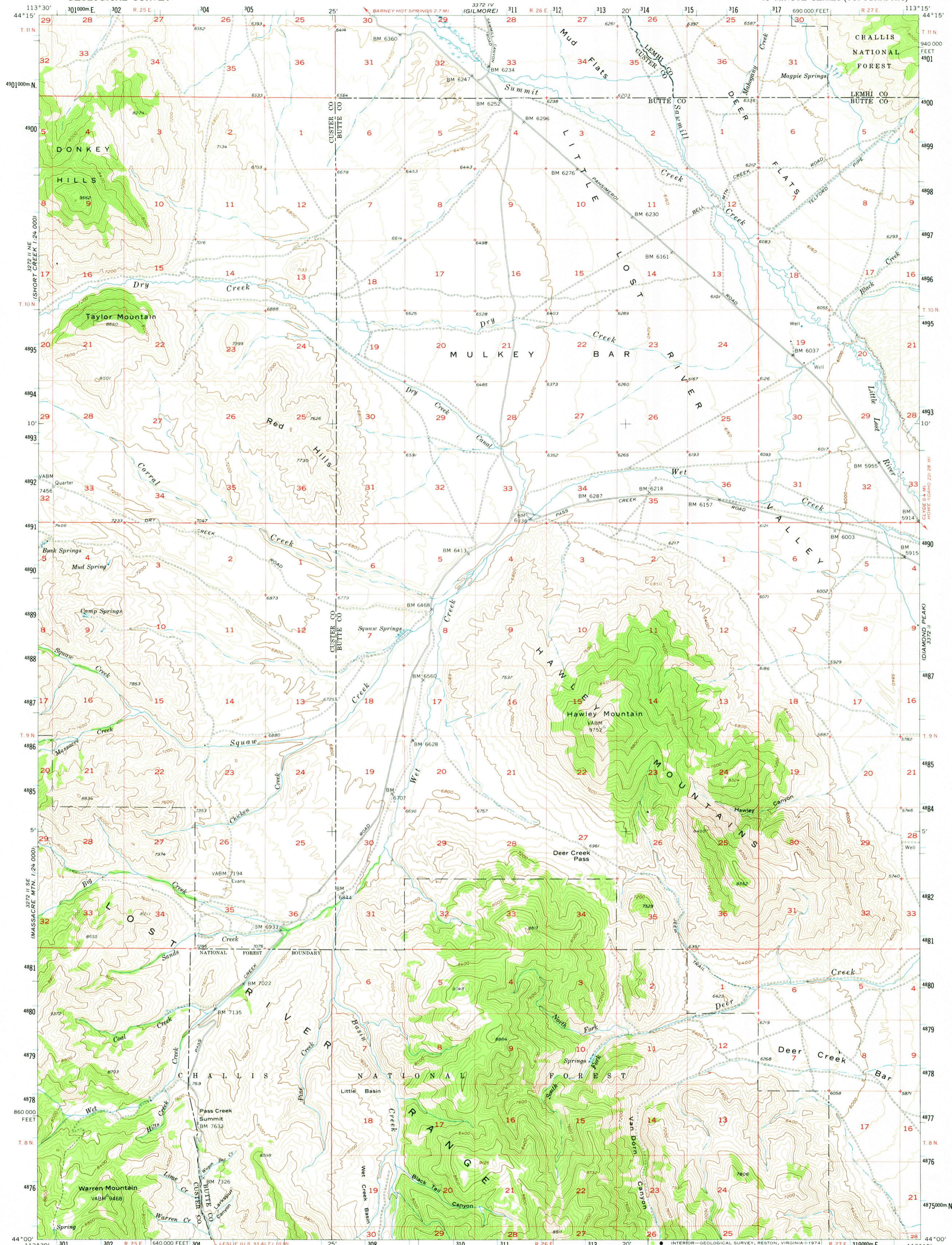


3271 (CONKEY HILLS)

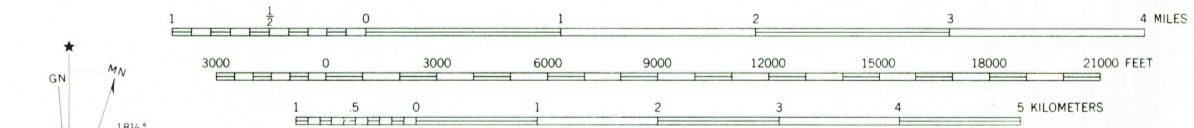
UNITED STATES DEPARTMENT OF THE INTERIOR GEOLOGICAL SURVEY

HAWLEY MOUNTAIN QUADRANGLE IDAHO 15 MINUTE SERIES (TOPOGRAPHIC)

3271 (NICHOLLA)

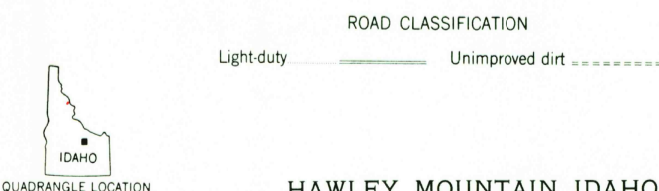


Mapped, edited, and published by the Geological Survey Control by USGS and USC&GS Topography from aerial photographs by multiplex methods Aerial photographs taken 1954. Field check 1957 Polyconic projection. 1927 North American datum 10,000-foot grid based on Idaho coordinate system, central zone 1000-meter Universal Transverse Mercator grid ticks, zone 12, shown in blue Unchecked elevations are shown in brown



CONTOUR INTERVAL 80 FEET DASHED LINES REPRESENT 40-FOOT CONTOURS DATUM IS MEAN SEA LEVEL

UTM GRID AND 1957 MAGNETIC NORTH DECLINATION AT CENTER OF SHEET THIS MAP COMPLIES WITH NATIONAL MAP ACCURACY STANDARDS FOR SALE BY U. S. GEOLOGICAL SURVEY, DENVER, COLORADO 80225, OR RESTON, VIRGINIA 22092 A FOLDER DESCRIBING TOPOGRAPHIC MAPS AND SYMBOLS IS AVAILABLE ON REQUEST



HAWLEY MOUNTAIN, IDAHO N4400—W11315/15 1957 AMS 3372 III—SERIES V793

USGS HISTORICAL FILE TOPOGRAPHIC DIVISION

JAN 09 1974

1515