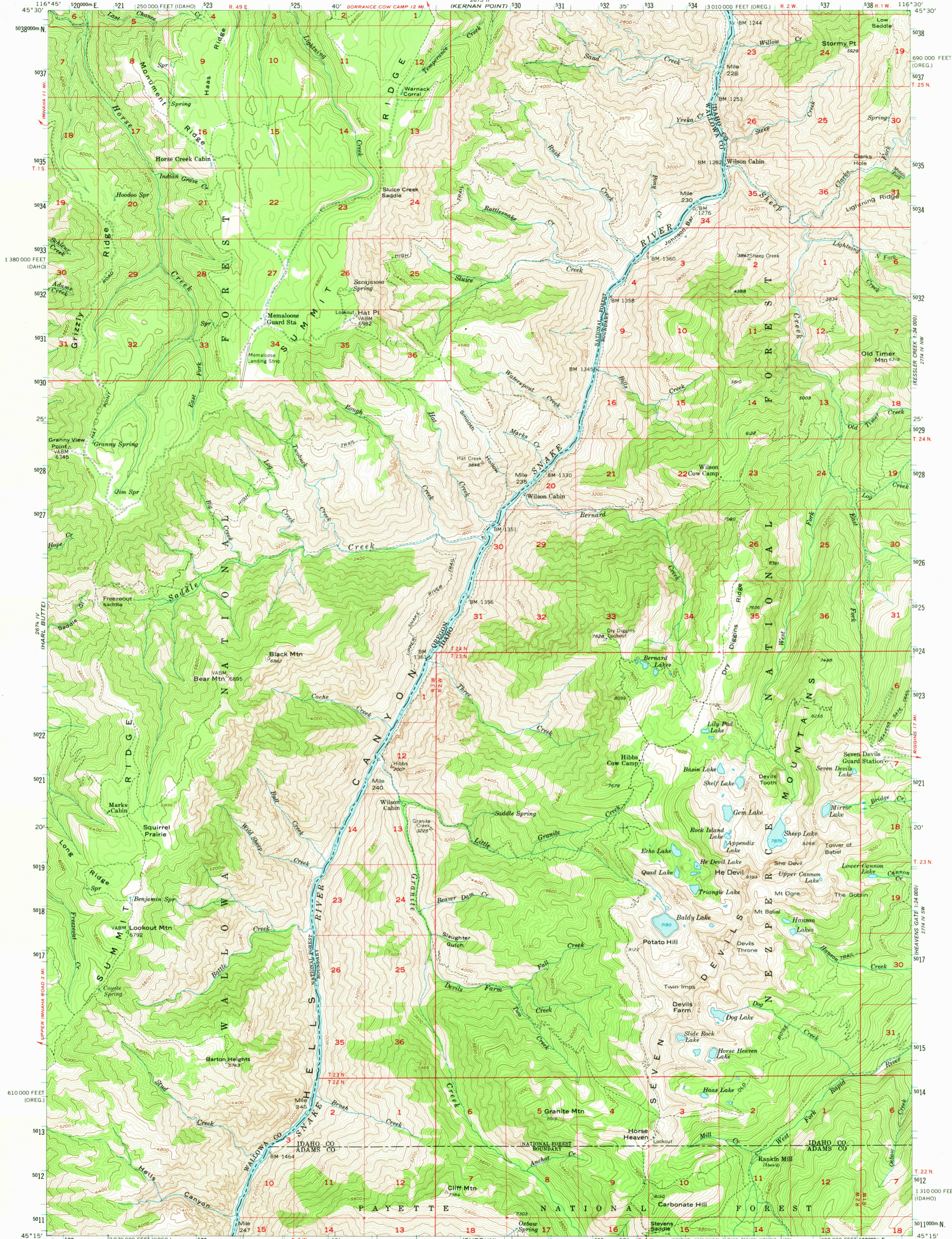
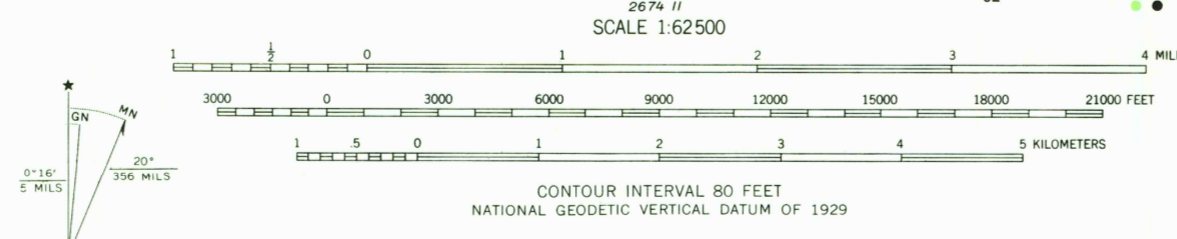


UNITED STATES
DEPARTMENT OF THE INTERIOR
GEOLOGICAL SURVEY

THE DEVIL QUADRANGLE
IDAHO-OREG.
15 MINUTE SERIES (TOPOGRAPHIC)



Maped, edited, and published by the Geological Survey
Control by USGS, USC&GS, and USFS
Topography from aerial photographs by multiplex methods
Aerial photographs taken 1953. Field check 1957
Polyconic projection. 1927 North American datum
10,000-foot grids based on Oregon coordinate system,
north zone, and Idaho coordinate system, west zone
1000-meter Universal Transverse Mercator grid ticks,
zone 11, shown in blue
To place on the predicted North American Datum 1983
move the projection lines 16 meters north and
77 meters east
There may be private inholdings within the boundaries of
the National or State reservations shown on this map
Unchecked elevations are shown in brown



ROAD CLASSIFICATION
Unimproved dirt -----
OREGON
QUADRANGLE LOCATION
HE DEVIL, IDAHO-OREG.
N4515-W11630/15
1957
DMA 2674 I-SERIES V793

THIS MAP COMPLIES WITH NATIONAL MAP ACCURACY STANDARDS
FOR SALE BY U.S. GEOLOGICAL SURVEY, DENVER, COLORADO 80225, OR RESTON, VIRGINIA 22092
A FOLDER DESCRIBING TOPOGRAPHIC MAPS AND SYMBOLS IS AVAILABLE ON REQUEST

USGS
Historical File
Topographic Division

3800
NOV 18 1980