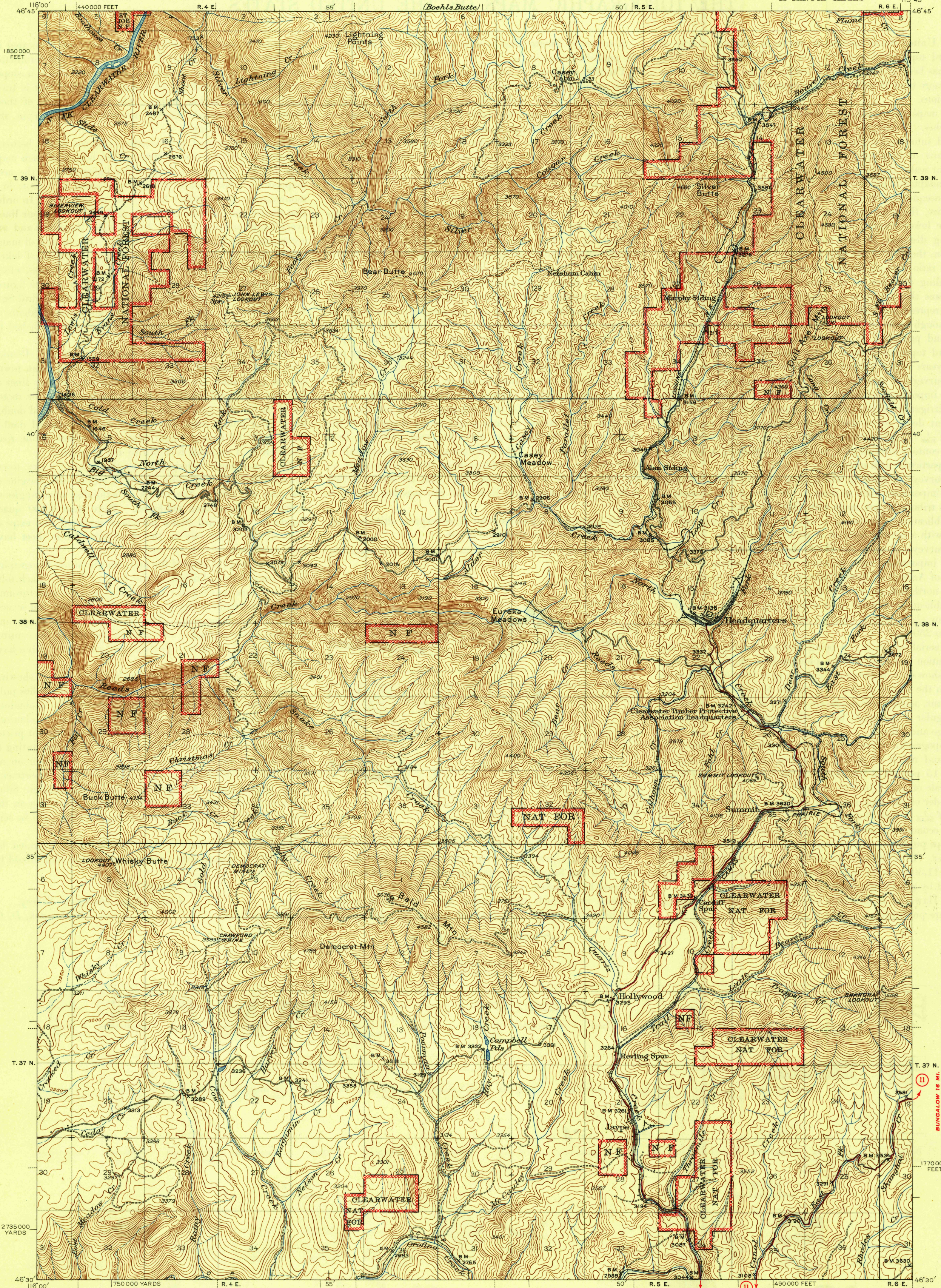
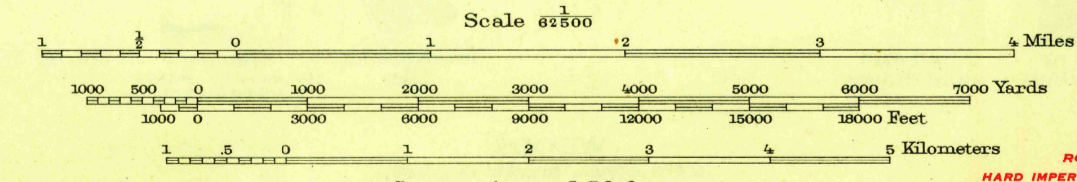
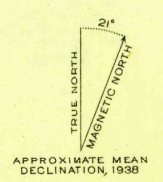


UNITED STATES  
DEPARTMENT OF THE INTERIOR  
GEOLOGICAL SURVEY

IDAHO  
(CLEARWATER COUNTY)  
HEADQUARTERS QUADRANGLE  
15-MINUTE SERIES



Topography by G.S. Druhot and V.S. Seward  
Surveyed in 1938



Contour interval 50 feet  
Datum is mean sea level

Polyconic projection. 1927 North American datum  
5000 yard grid based on U.S. zone system, F  
10000 foot grid based on Idaho (West)  
rectangular coordinate system

PIERCE 0.5 MI.  
WEIPPE 13 MI.  
ROUTES USUALLY TRAVELED  
HARD IMPERVIOUS SURFACES  
OTHER SURFACE IMPROVEMENTS  
U. S. ROUTE 1944 STATE ROUTE

HEADQUARTERS, IDAHO  
Edition of 1944  
N4630-W11545/15

BUNGALOW 16 MI.  
CEDARS RANGER STATION 46 MI.