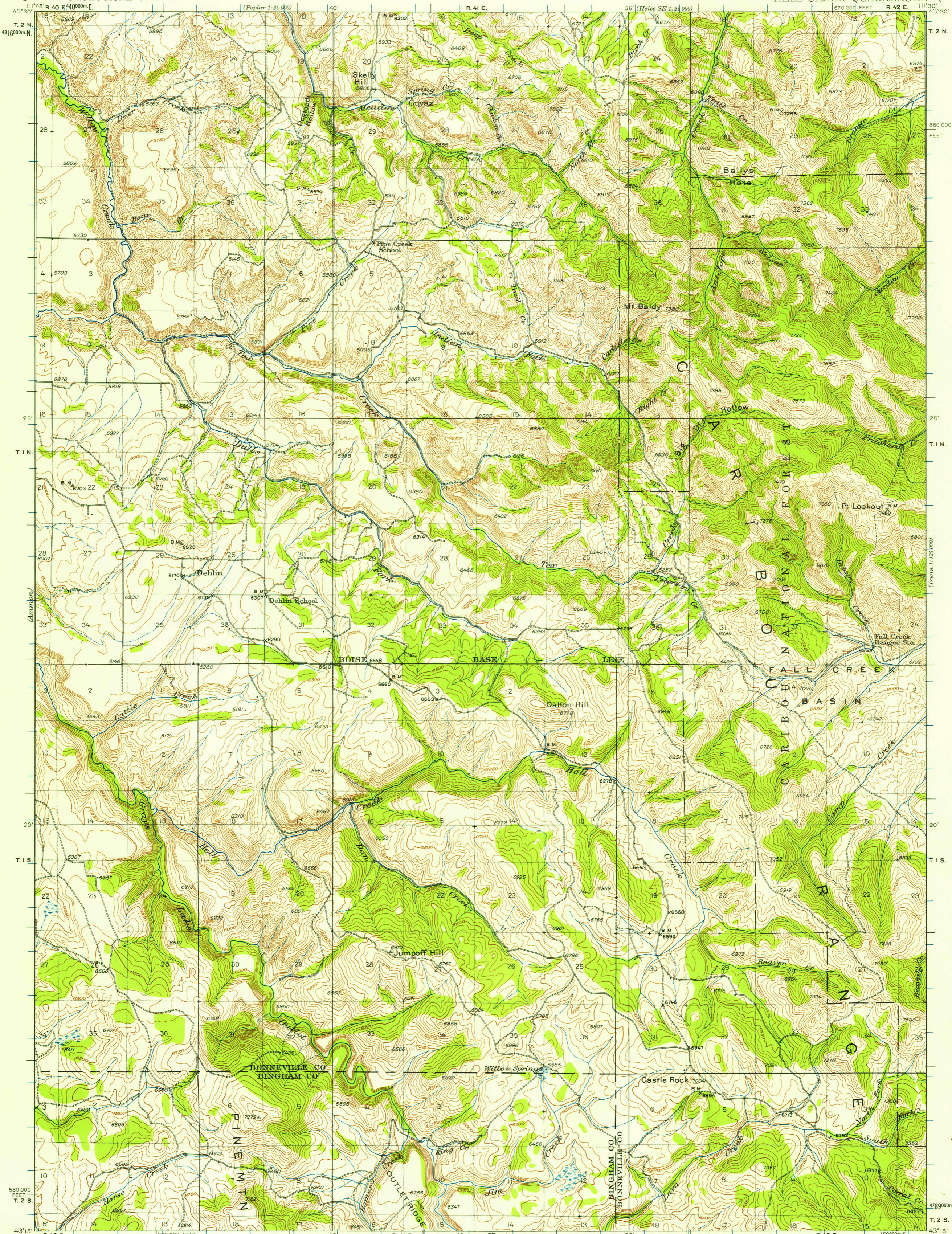


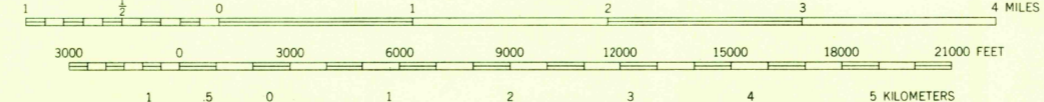
UNITED STATES
DEPARTMENT OF THE INTERIOR
GEOLOGICAL SURVEY

IDAHO
HELL CREEK QUADRANGLE



Topography by R. T. Evans and W. J. Lloyd
Surveyed in 1924

SCALE 1:62500



CONTOUR INTERVAL 50 FEET
DATUM IS MEAN SEA LEVEL

USGS
Historical
Topographic
HELL CREEK, IDAHO
N 4315-W 11130/15
1924

U.S.G.S.
FILE COPY
TOPOGRAPHIC DIVISION

FOR SALE BY U. S. GEOLOGICAL SURVEY, DENVER 2, COLORADO OR WASHINGTON 25, D. C.
A FOLDER DESCRIBING TOPOGRAPHIC MAPS AND SYMBOLS IS AVAILABLE ON REQUEST

JAN 14 1958

1360