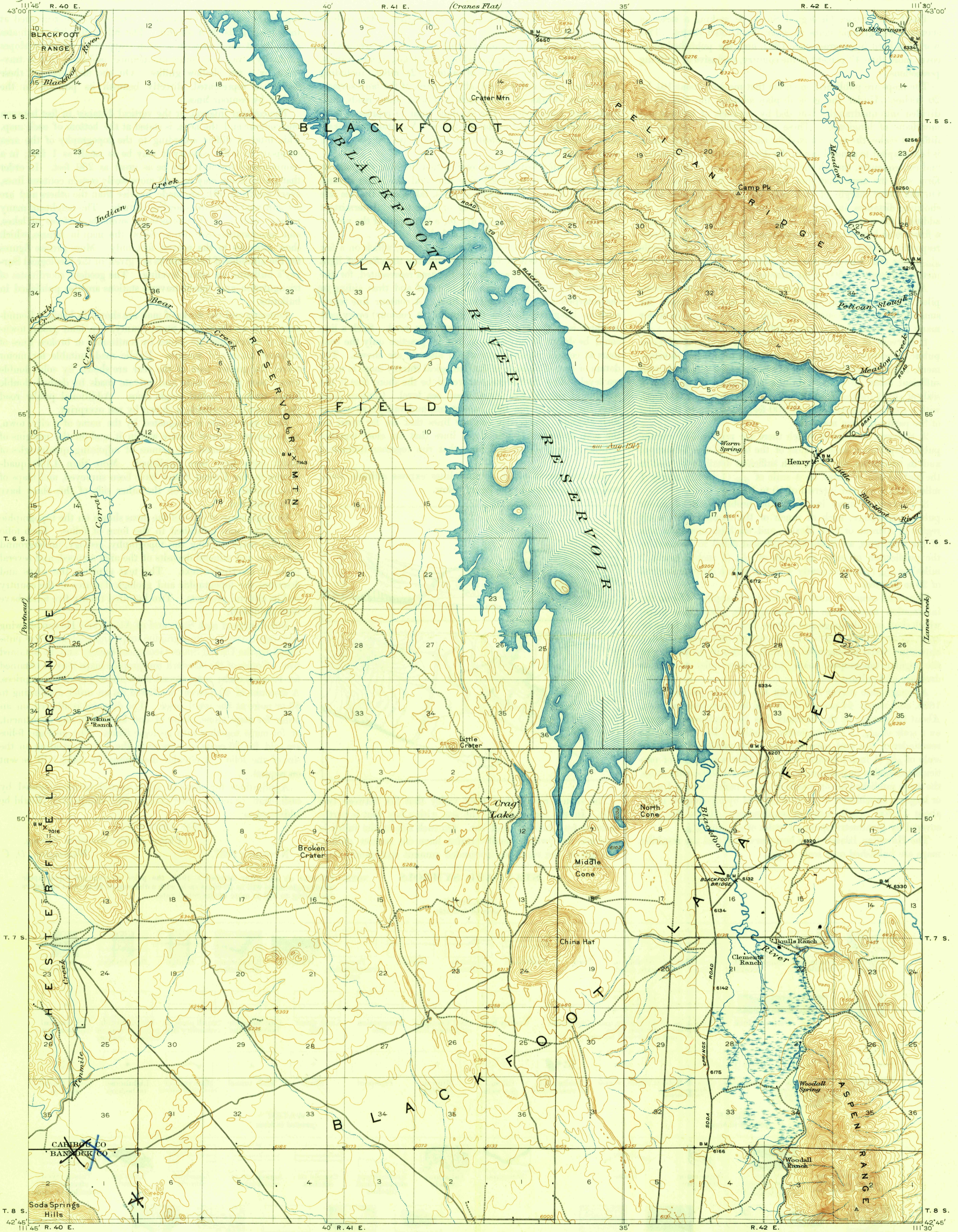
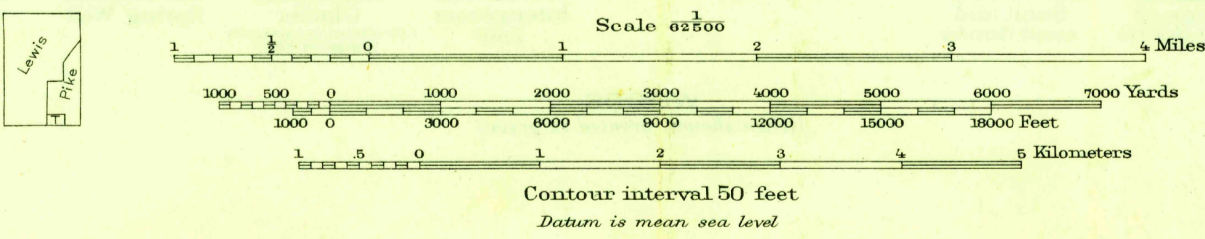


CARIBOU



R.B. Marshall, Chief Geographer.  
T.G. Gardine, Geographer in charge.  
Topography by J.L. Lewis, Albert Pike, and W.O. Tufts.  
Control by Geo. T. Hawkins, F.A. Danforth,  
D.S. Birkett, and F.L. Whaley.  
Surveyed in 1910-1914.



Edition of 1916 reprinted 1948  
Polyconic projection.