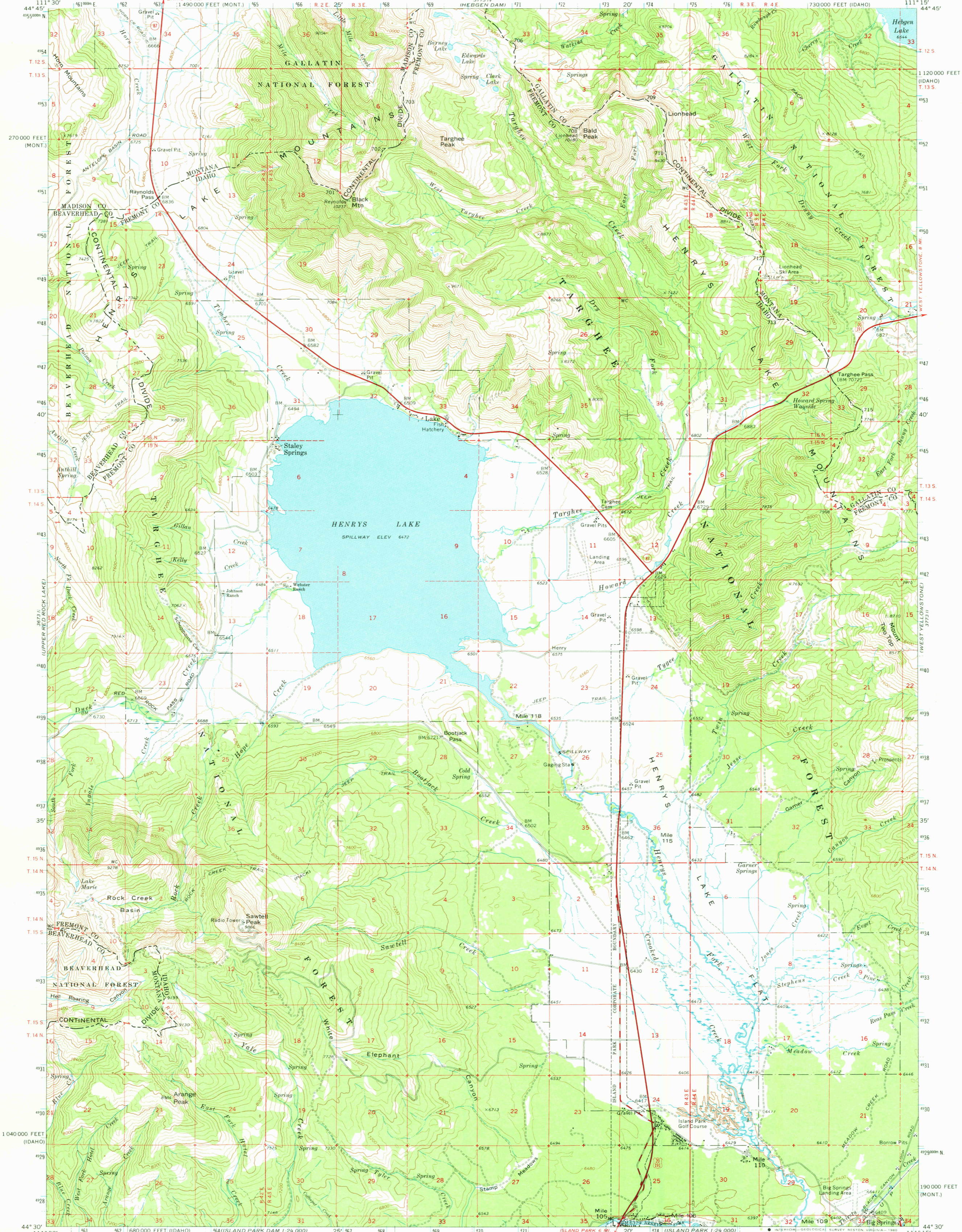
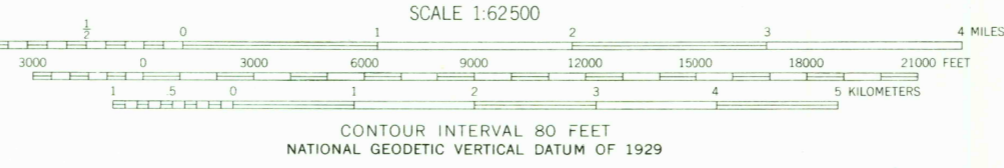


UNITED STATES
DEPARTMENT OF THE INTERIOR
GEOLOGICAL SURVEY

HENRYS LAKE QUADRANGLE
IDAHO-MONTANA
15 MINUTE SERIES (TOPOGRAPHIC)



Mapped, edited, and published by the Geological Survey
Control by USGS and USC&GS
Topography by photogrammetric methods from aerial photographs taken 1959 and 1962. Field checked 1964
Polyconic projection, 1927 North American datum
10,000-foot grids based on Idaho coordinate system, east zone and Montana coordinate system, south zone
1000-meter Universal Transverse Mercator grid ticks, zone 12, shown in blue
To place on the predicted North American Datum 1983 move the projection lines 11 meters north and 63 meters east
There may be private inholdings within the boundaries of the National or State reservations shown on this map



ROAD CLASSIFICATION

- Heavy-duty ——— Light-duty ———
- Medium-duty ——— Unimproved dirt ———
- U.S. Route ——— State Route ———

This area also covered by 7.5 minute, 1:24 000 scale maps: Targhee Pass 1964, Targhee Peak 1964, Sawtell Peak 1964, and Big Springs 1964.

HENRYS LAKE, IDAHO-MONT.
N4430-W11115/15
1964
DMA 3773 III-SERIES V793

THIS MAP COMPLIES WITH NATIONAL MAP ACCURACY STANDARDS
FOR SALE BY U.S. GEOLOGICAL SURVEY, DENVER, COLORADO 80225, OR RESTON, VIRGINIA 22092
A FOLDER DESCRIBING TOPOGRAPHIC MAPS AND SYMBOLS IS AVAILABLE ON REQUEST

USGS
Historical File
Topographic Division

2100
JAN 29 1981