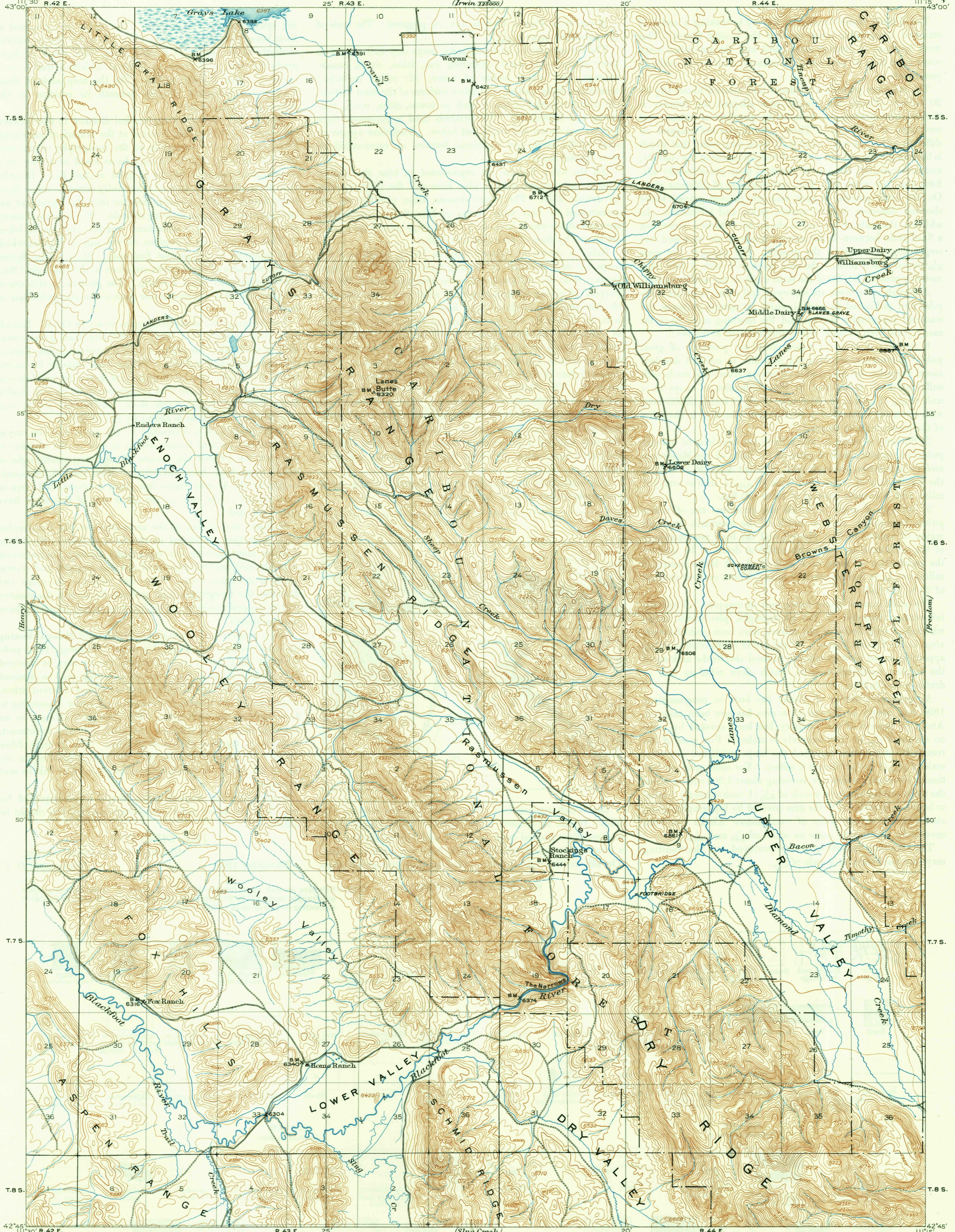


U.S.G.S. FILE COPY

UNITED STATES DEPARTMENT OF THE INTERIOR GEOLOGICAL SURVEY

IDAHO (CARIBOU COUNTY) LANES CREEK QUADRANGLE

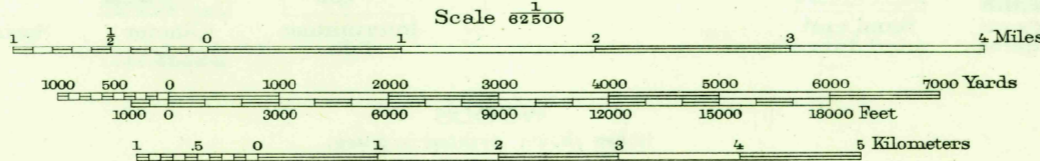


U.S.G.S. FILE COPY Inspection and Editing.

U.S.G.S. FILE COPY Inspection and Editing.

R.B. Marshall, Chief Geographer; T.G. Gerdine, Geographer in charge; Topography by Albert Pike and J.L. Lewis. Control by Geo. T. Hawkins, D.S. Birkett, and Frank A. Danforth. Surveyed in 1911-1912.

Lewis Pike



Contour interval 50 feet Datum is mean sea level

Edition of Jan. 1915, reprinted 1948 Polyconic projection.

USGS Lanes Creek, Idaho N4245-11115/15

Historical File Topographic Division FILE COPY Inspection and Editing.

DEC 13 1948

3245