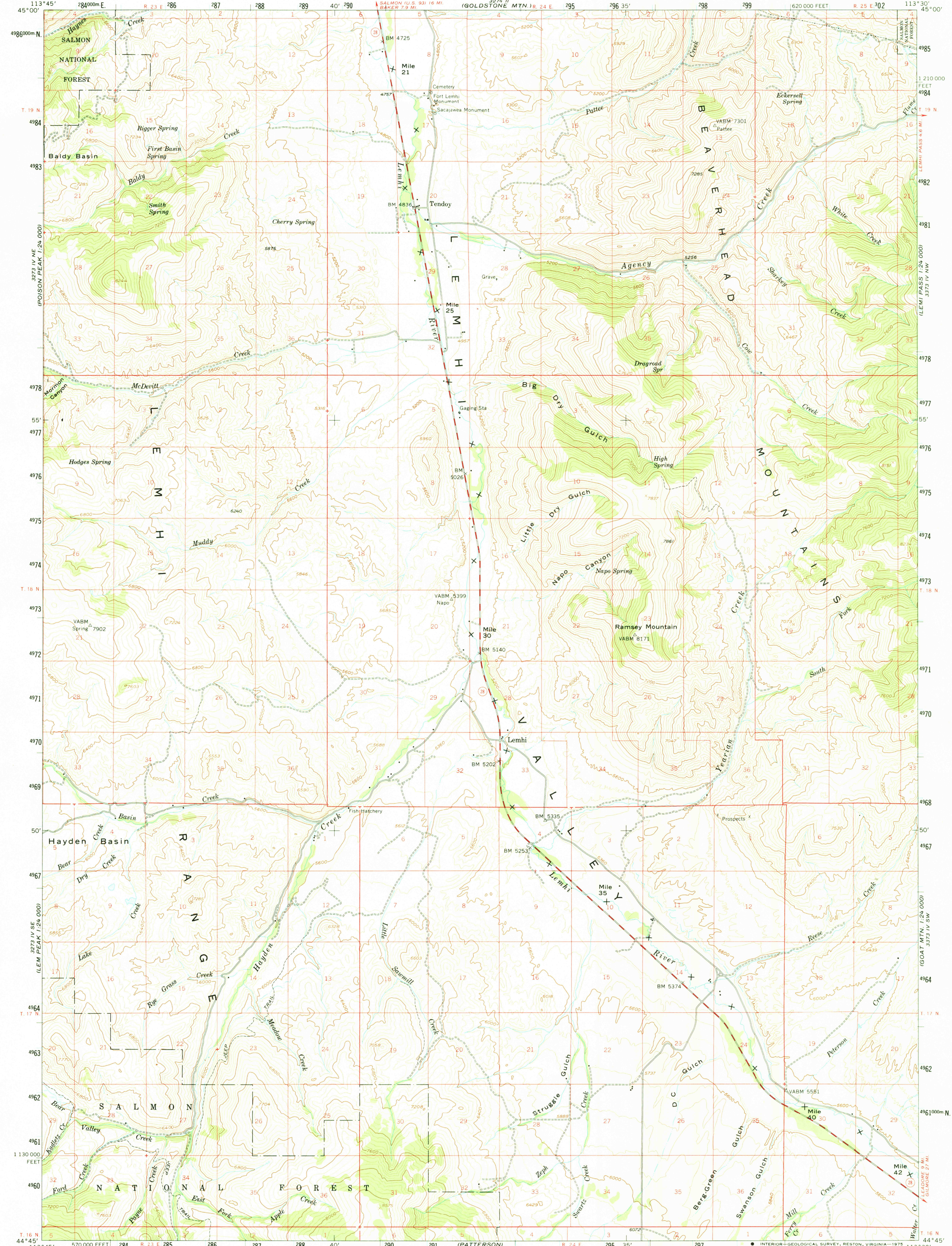
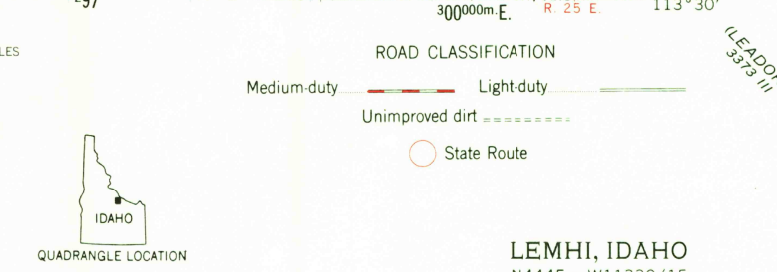
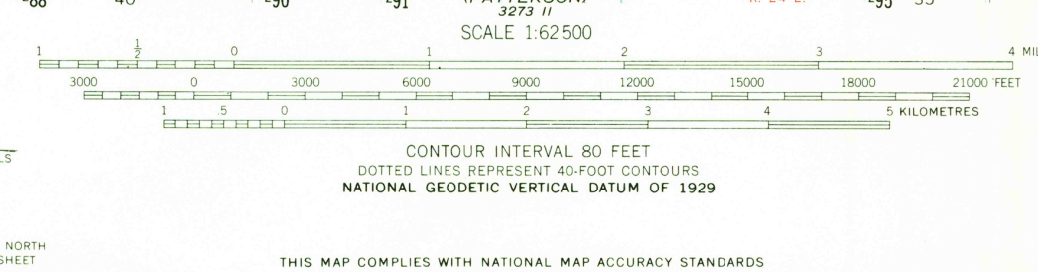
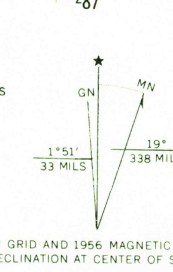


UNITED STATES  
DEPARTMENT OF THE INTERIOR  
GEOLOGICAL SURVEY

LEMHI QUADRANGLE  
IDAHO-LEMHI CO.  
15 MINUTE SERIES (TOPOGRAPHIC)



Maped, edited, and published by the Geological Survey  
Control by USGS and USC&GS  
Topography from aerial photographs by photogrammetric methods  
Aerial photographs taken 1954. Advance field check 1956  
Polyconic projection. 1927 North American datum  
10,000-foot grid based on Idaho coordinate system,  
central zone  
1000-metre Universal Transverse Mercator grid ticks,  
zone 12, shown in blue  
Unchecked elevations are shown in brown



THIS MAP COMPLIES WITH NATIONAL MAP ACCURACY STANDARDS  
FOR SALE BY U. S. GEOLOGICAL SURVEY, DENVER, COLORADO 80225, OR RESTON, VIRGINIA 22092  
A FOLDER DESCRIBING TOPOGRAPHIC MAPS AND SYMBOLS IS AVAILABLE ON REQUEST



LEMHI, IDAHO  
N4445-W11330/15  
1956  
AMS 3273 I-SERIES V793

USGS  
HISTORICAL FILE  
TOPOGRAPHIC DIVISION

SEP 8 1975

1660