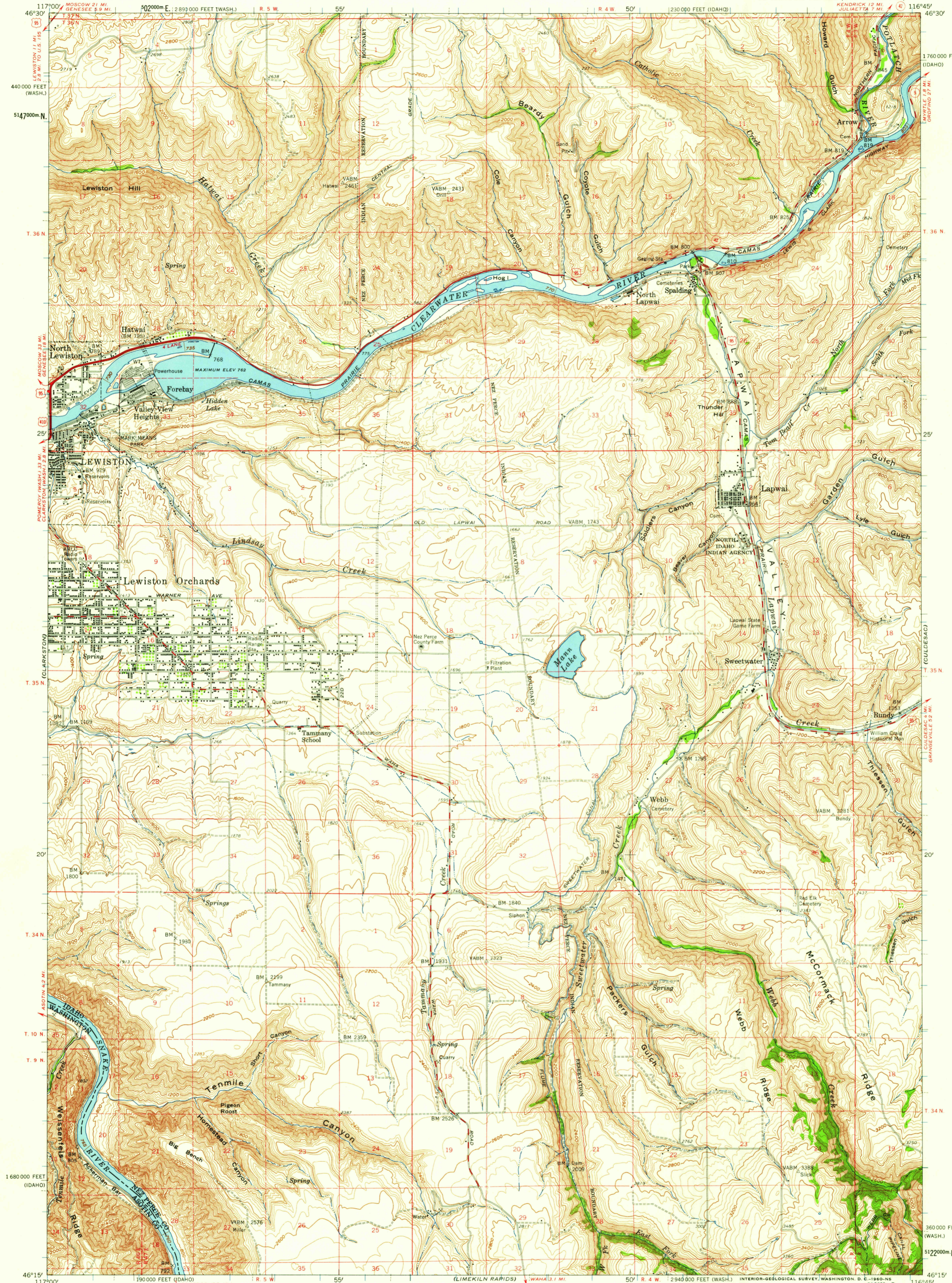


UNITED STATES
DEPARTMENT OF THE INTERIOR
GEOLOGICAL SURVEY

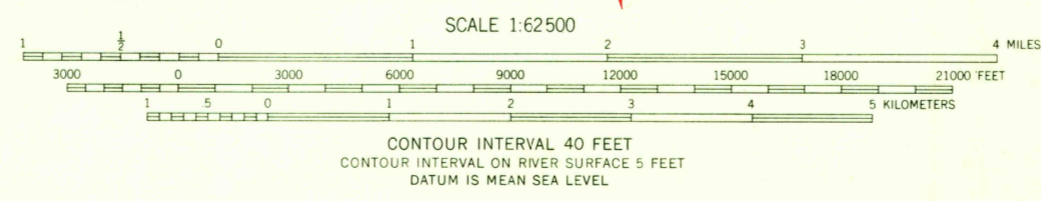
LEWISTON ORCHARDS QUADRANGLE
IDAHO - WASHINGTON
15 MINUTE SERIES (TOPOGRAPHIC)



Mapped, edited, and published by the Geological Survey
Control by USGS and USC&GS

Compiled in 1959 from 1:24,000-scale maps of Lapwai, Lewiston Orchards North, Lewiston Orchards South, and Sweetwater 7.5 minute quadrangles, surveyed 1958
Topography from aerial photographs by photogrammetric methods
Aerial photographs taken 1955

Polyconic projection. 1927 North American datum
10,000-foot grids based on Idaho coordinate system, west zone, and on Washington coordinate system, south zone
100-meter Universal Transverse Mercator grid ticks, zone 11, shown in blue
Unchecked elevations are shown in brown
Dashed land lines indicate approximate locations



ROAD CLASSIFICATION

Heavy-duty	Light-duty
Medium-duty	Unimproved dirt
U.S. Route	State Route



This area also covered by 1:24,000-scale maps of Lapwai, Lewiston Orchards North, Lewiston Orchards South, and Sweetwater 7.5 minute quadrangles, surveyed 1958
LEWISTON ORCHARDS, IDAHO - WASH
N4615-W11645/15

THIS MAP COMPLIES WITH NATIONAL MAP ACCURACY STANDARDS
FOR SALE BY U.S. GEOLOGICAL SURVEY, DENVER 25, COLORADO OR WASHINGTON 25, D. C.
A FOLDER DESCRIBING TOPOGRAPHIC MAPS AND SYMBOLS IS AVAILABLE ON REQUEST

U.S.G.S.
FILE COPY
TOPOGRAPHIC DIVISION

USGS
Historical File
Topographic Division

1958

JUN - 9 1960

2540