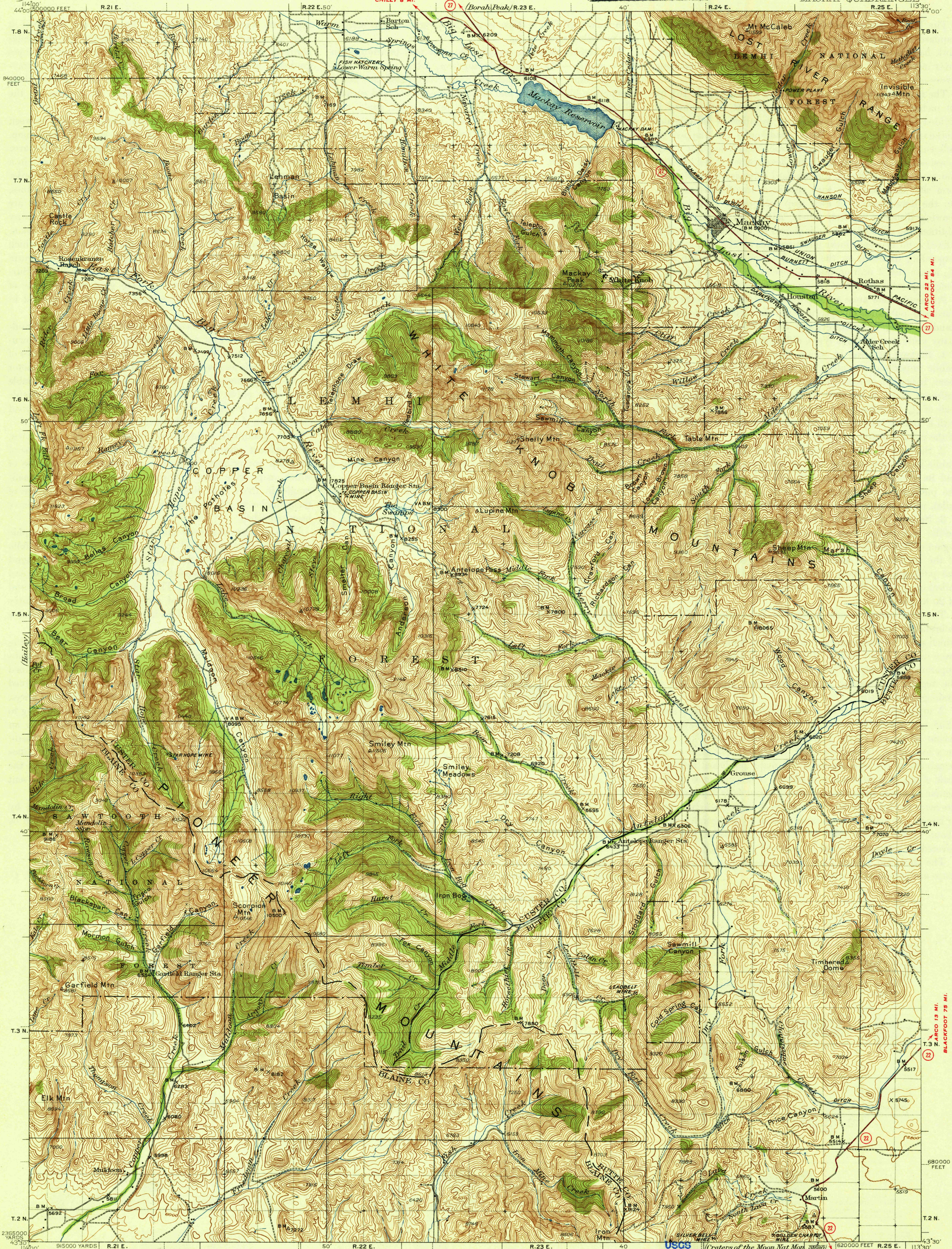


UNITED STATES
DEPARTMENT OF THE INTERIOR
GEOLOGICAL SURVEY

U. S. G. S.
FILE COPY
Inspection and Editing.

IDAHO
MACKAY QUADRANGLE



Topography by Lee Morrison, Max J. Gleissner,
L.O. Newsome, S.C. Kain, F.H. Purdy, Roger H. McConnel,
and Roger F. Peroz
Surveyed in 1930 and 1935

Scale 1:25000
Miles
Kilometers
Contour interval 100 feet
Datum is mean sea level

USGS
Historical File
Topographic Division

Craters of the Moon Nat Mon 2400' 620000 FEET R.25 E. | 113°30'
Polyconic projection, 1927 North American datum,
5000 yard grid based on U.S. zone system, F
20000 foot grid based on Idaho (Central)
rectangular coordinate system CAREY 30 MI.
SHOSHONE 69 MI.

ROUTES USUALLY TRAVELED
HARD IMPERVIOUS SURFACES
OTHER SURFACE IMPROVEMENTS
1939
U. S. ROUTE STATE ROUTE

MACKAY, IDAHO
Edition of 1940
N 4330-W 11330/30

U. S. G. S.
FILE COPY
Inspection and Editing.