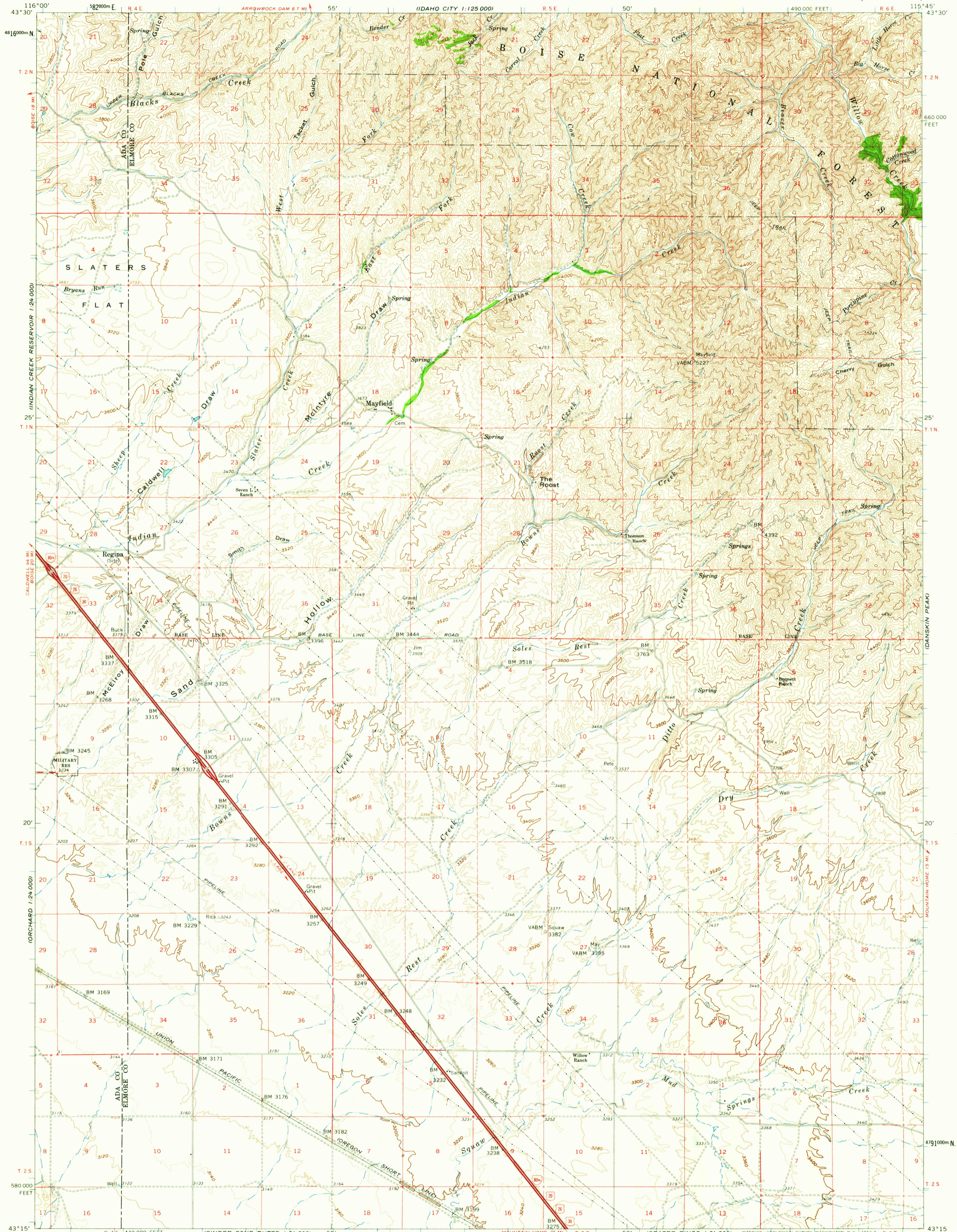


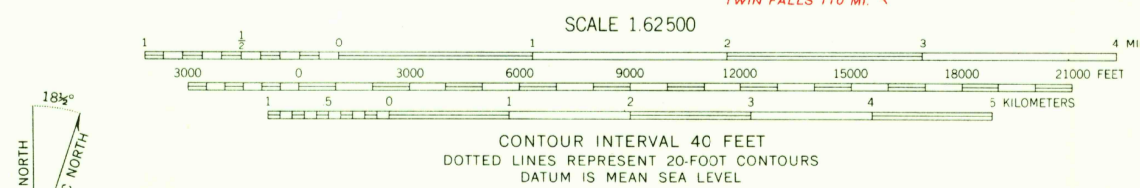
UNITED STATES  
DEPARTMENT OF THE INTERIOR  
GEOLOGICAL SURVEY

MAYFIELD QUADRANGLE  
IDAHO  
15 MINUTE SERIES (TOPOGRAPHIC)

IDAHO CITY  
1:125,000



Maped, edited, and published by the Geological Survey in cooperation with the Army Map Service Control by USGS, USC&GS, and U. S. Bureau of Reclamation Topography by photogrammetric methods from aerial photographs taken 1958 and by U. S. Bureau of Reclamation Field checked by U. S. Geological Survey 1960 Polyconic projection. 1927 North American datum 10,000-foot grid based on Idaho coordinate system, west zone 1000-meter Universal Transverse Mercator grid ticks, zone 11, shown in blue Dashed land lines indicate approximate locations



ROAD CLASSIFICATION  
Heavy-duty — Light-duty  
Unimproved dirt —

USGS  
Historical File  
Topographic Division  
MAYFIELD, IDAHO  
N4315-W11545/15  
1960

THIS MAP COMPLIES WITH NATIONAL MAP ACCURACY STANDARDS FOR SALE BY U. S. GEOLOGICAL SURVEY, DENVER 25, COLORADO OR WASHINGTON 25, D. C. A FOLDER DESCRIBING TOPOGRAPHIC MAPS AND SYMBOLS IS AVAILABLE ON REQUEST

JUL 23 1962

2160