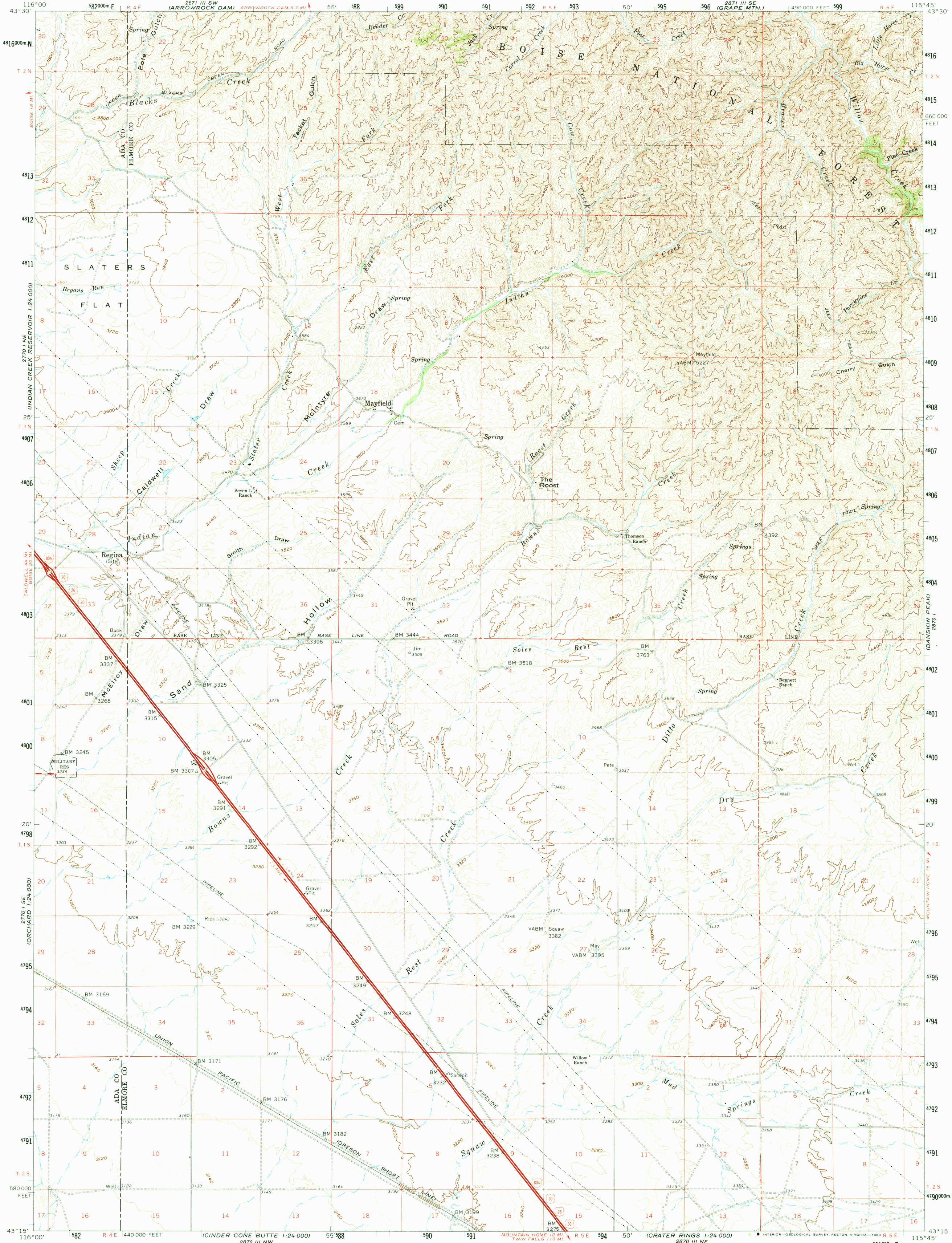


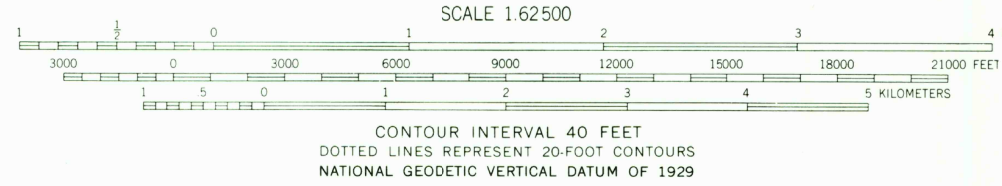
UNITED STATES  
DEPARTMENT OF THE INTERIOR  
GEOLOGICAL SURVEY

MAYFIELD QUADRANGLE  
IDAHO  
15 MINUTE SERIES (TOPOGRAPHIC)

2871 115W  
(LONG 124 000)



Mapped, edited, and published by the Geological Survey  
in cooperation with the Army Map Service  
Control by USGS, USC&GS, and U. S. Bureau of Reclamation  
Topography by photogrammetric methods from aerial photographs  
taken 1958 and by U. S. Bureau of Reclamation  
Field checked by U. S. Geological Survey 1960  
Polyconic projection 1927 North American datum  
10,000-foot grid based on Idaho coordinate system, west zone  
1000-meter Universal Transverse Mercator grid ticks,  
zone 11, shown in blue  
To place on the predicted North American Datum 1983  
move the projection lines 15 meters north and  
76 meters east  
Dashed land lines indicate approximate location  
There may be private inholdings within the boundaries of  
the National or State reservations shown on this map



MAYFIELD, IDAHO  
N4315—W11545/15

1960  
DMA 2870 IV—SERIES V793