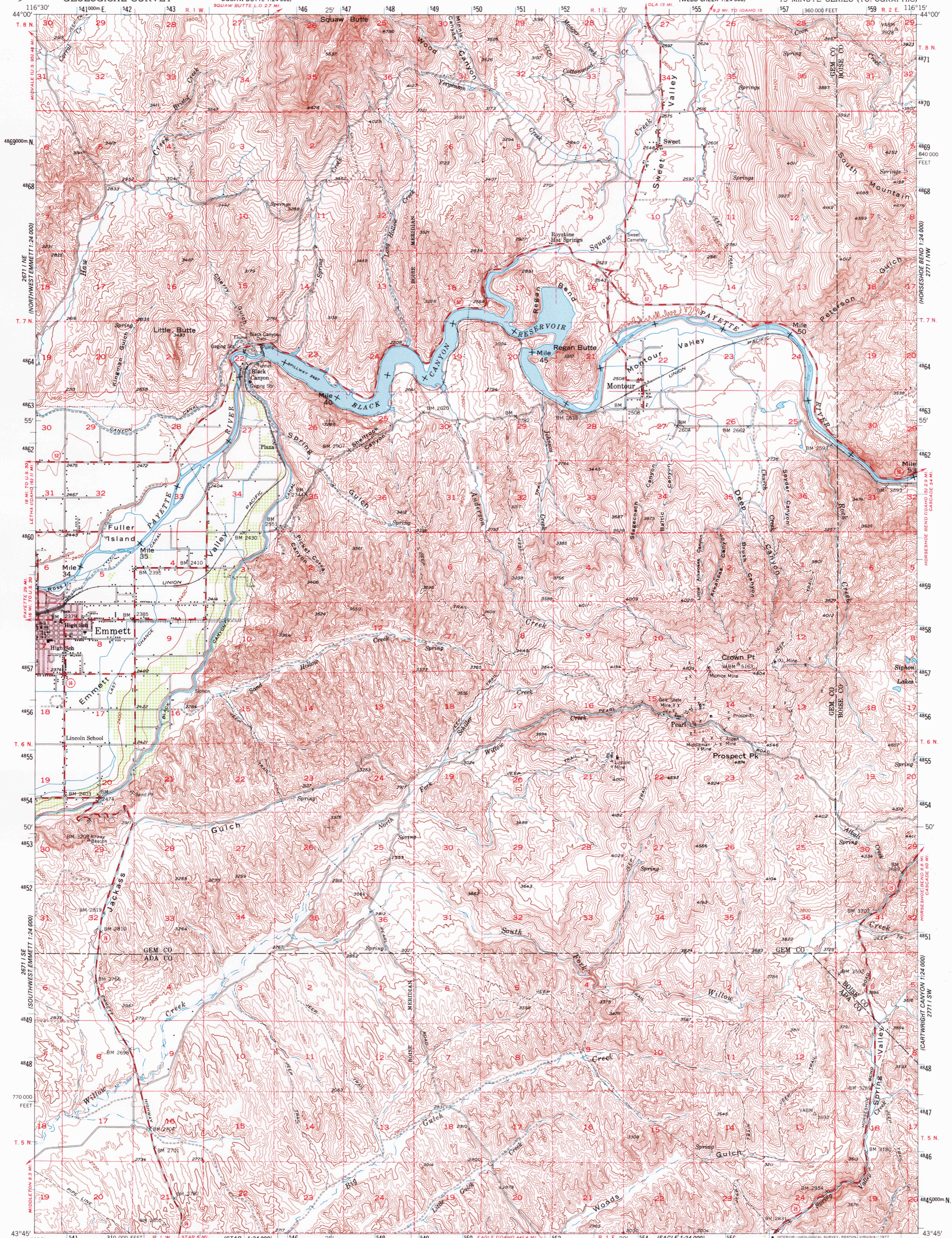


UNITED STATES
DEPARTMENT OF THE INTERIOR
GEOLOGICAL SURVEY

MONTOUR QUADRANGLE
IDAHO
15 MINUTE SERIES (TOPOGRAPHIC)



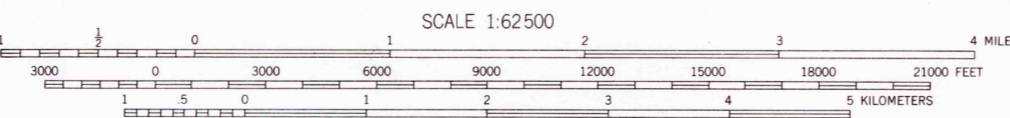
Mapped, edited, and published by the Geological Survey
Control by USGS and USC&GS

Topography from aerial photographs by multiple methods
and by plane-table surveys by USGS 1945-46
Aerial photographs taken 1951. Field check 1953

Polygonic projection. 1927 North American datum
10,000-foot grid based on Idaho coordinate system, west zone
Red tint indicates areas in which only landmark buildings are shown
Dashed land lines indicate approximate locations

1000-meter Universal Transverse Mercator grid ticks,
zone 11, shown in blue

UTM GRID AND 1983 MAGNETIC NORTH
DECLINATION AT CENTER OF SHEET



CONTOUR INTERVAL 40 FEET
NATIONAL GEODETIC VERTICAL DATUM OF 1929

THIS MAP COMPLIES WITH NATIONAL MAP ACCURACY STANDARDS
FOR SALE BY U.S. GEOLOGICAL SURVEY, DENVER, COLORADO 80225, OR RESTON, VIRGINIA 22092
A FOLDER DESCRIBING TOPOGRAPHIC MAPS AND SYMBOLS IS AVAILABLE ON REQUEST

ROAD CLASSIFICATION
Heavy-duty ——— Light-duty ———
Medium-duty ——— Unimproved dirt ———
U.S. Route ——— State Route ———



MONTOUR, IDAHO
N4345-W11615/15

1953
AMS 2771 IV—SERIES V793

USGS
Historical File
Topographic Division

FEB 14 1978

5150