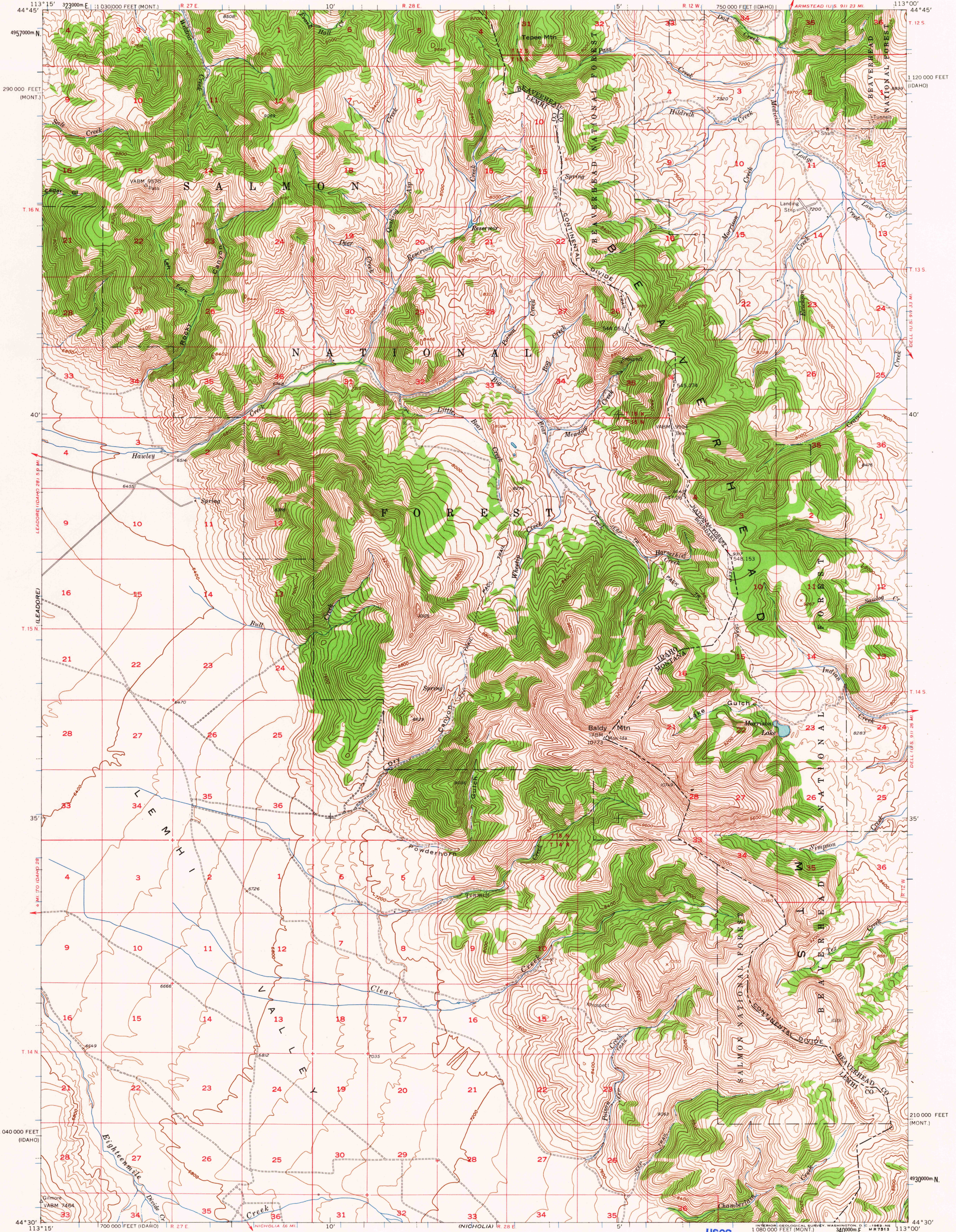
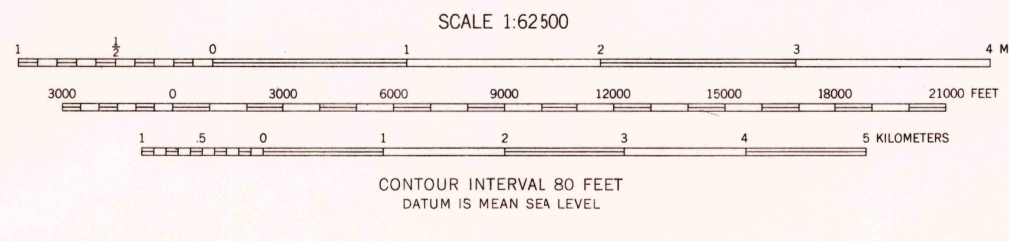


UNITED STATES
DEPARTMENT OF THE INTERIOR
GEOLOGICAL SURVEY

MORRISON LAKE QUADRANGLE
IDAHO-MONTANA
15 MINUTE SERIES (TOPOGRAPHIC)

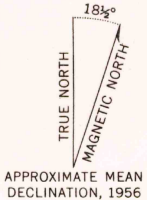


Mapped, edited, and published by the Geological Survey
Control by USGS and USC&GS
Topography from aerial photographs by multiplex methods
Aerial photographs taken 1953-54. Advance field check 1956
Polyconic projection. 1927 North American datum
10,000-foot grids based on Idaho coordinate system,
central zone, and Montana coordinate system, south zone
1000-meter Universal Transverse Mercator grid ticks,
zone 12, shown in blue
Unchecked elevations are shown in brown



USGS
Historical File
Topographic Division
ROAD CLASSIFICATION
Light-duty Unimproved dirt
U.S.G.S.
FILE COPY
MORRISON LAKE, IDAHO-MONT.
N4430-W11300/15
15 MINUTE SERIES (TOPOGRAPHIC)
1956

(GILMORE)



THIS MAP COMPLIES WITH NATIONAL MAP ACCURACY STANDARDS
FOR SALE BY U. S. GEOLOGICAL SURVEY, DENVER 25, COLORADO OR WASHINGTON 25, D. C.
A FOLDER DESCRIBING TOPOGRAPHIC MAPS AND SYMBOLS IS AVAILABLE ON REQUEST

AUG 23 1963

(SCOTT PEAK)