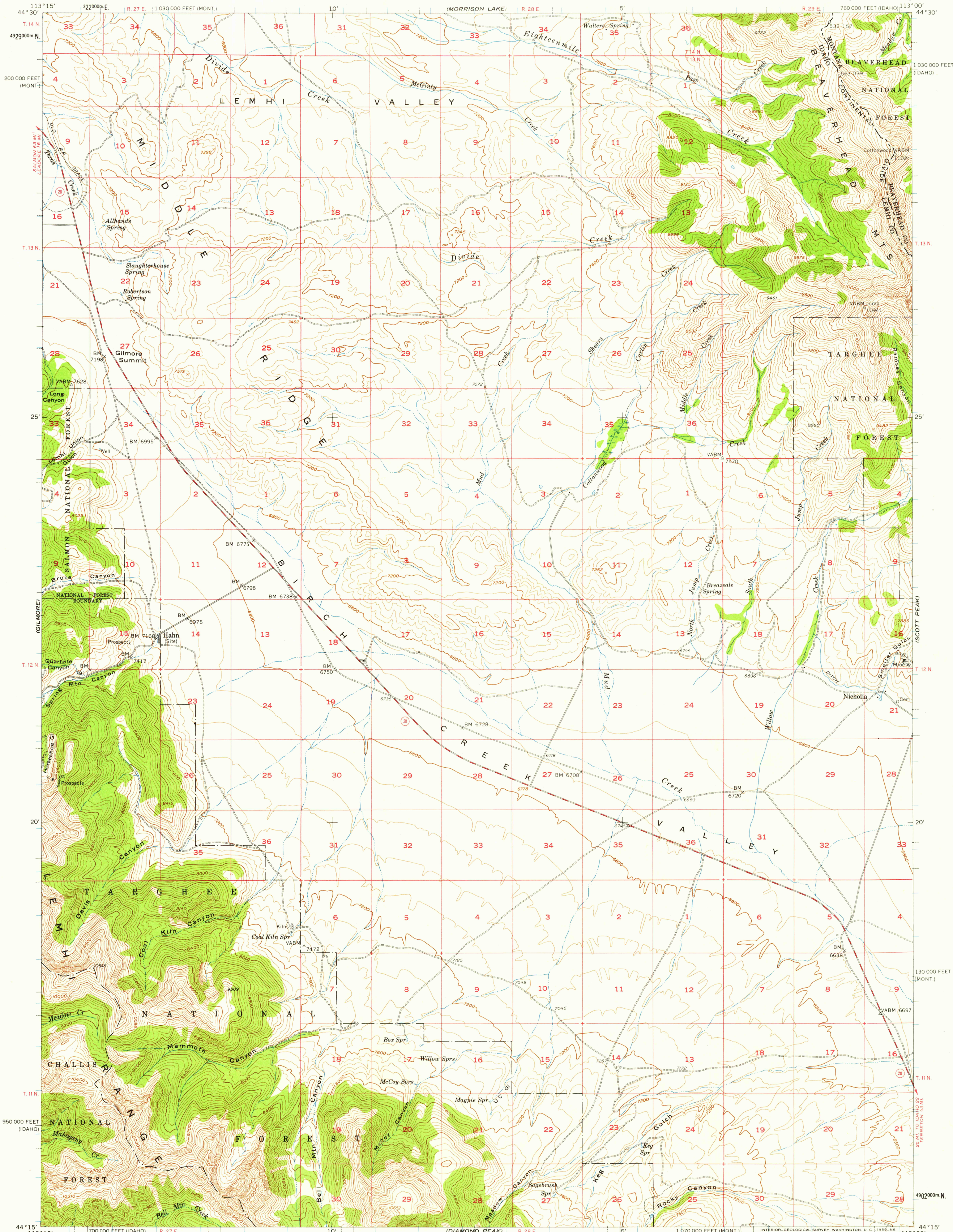
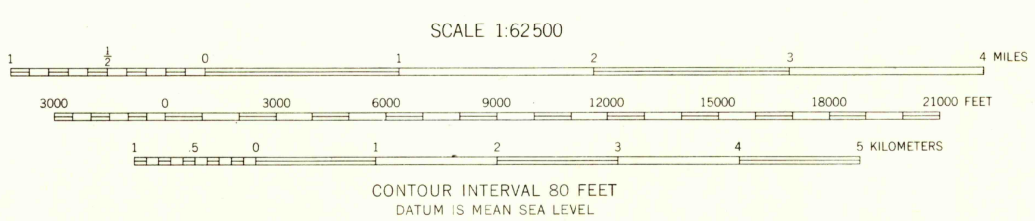


UNITED STATES  
DEPARTMENT OF THE INTERIOR  
GEOLOGICAL SURVEY

NICHOLIA QUADRANGLE  
IDAHO—MONTANA  
15 MINUTE SERIES (TOPOGRAPHIC)



Mapped, edited, and published by the Geological Survey  
Control by USGS and USC&GS  
Topography from aerial photographs by multiplex methods  
Aerial photographs taken 1954 Advance field check 1956  
Polyconic projection. 1927 North American datum  
10,000-foot grids based on Idaho coordinate system,  
central zone, and Montana coordinate system, south zone  
1000-meter Universal Transverse Mercator grid ticks,  
zone 12, shown in blue  
Unchecked elevations are shown in brown



USGS  
Historical File  
Topographic Division

ROAD CLASSIFICATION  
Light duty  
Unimproved dirt  
State Route



NICHOLIA, IDAHO—MONT.  
N4415—W11300/15

1956

THIS MAP COMPLIES WITH NATIONAL MAP ACCURACY STANDARDS  
FOR SALE BY U. S. GEOLOGICAL SURVEY, DENVER 2, COLORADO OR WASHINGTON 25, D. C.  
A FOLDER DESCRIBING TOPOGRAPHIC MAPS AND SYMBOLS IS AVAILABLE ON REQUEST

U.S.G.S.  
FILE COPY  
TOPOGRAPHIC DIVISION

APR 11 1959

1450