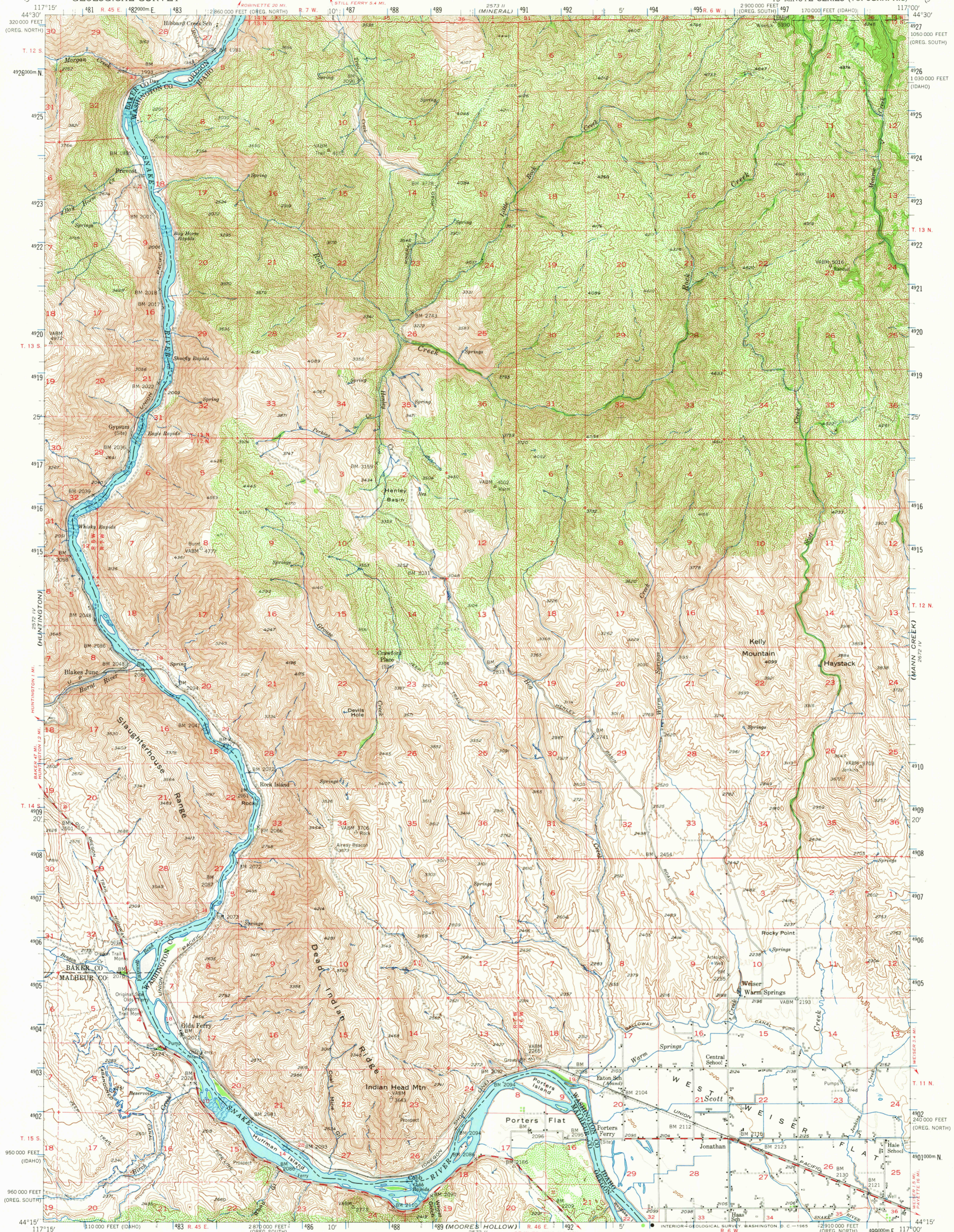


UNITED STATES  
DEPARTMENT OF THE INTERIOR  
GEOLOGICAL SURVEY

OLDS FERRY QUADRANGLE  
IDAHO-OREGON  
15 MINUTE SERIES (TOPOGRAPHIC)

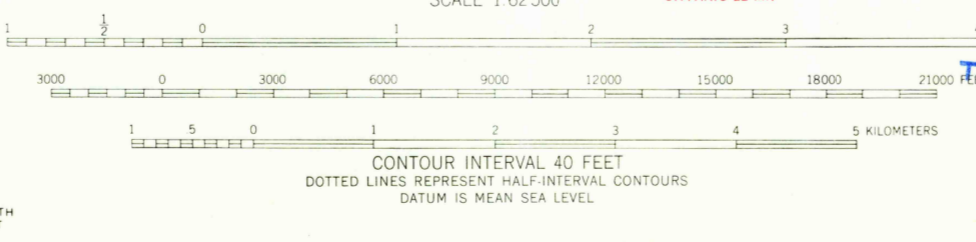


Mapped, edited, and published by the Geological Survey  
Control by USGS and USC&GS

Topography from aerial photographs by multiplex methods  
and by plane-table surveys 1952. Aerial photographs taken 1950

Polyconic projection. 1927 North American datum  
10,000-foot grids based on Idaho coordinate system, west zone  
and Oregon coordinate system, north and south zones

Dashed land lines indicate approximate locations  
1000-meter Universal Transverse Mercator grid ticks,  
zone 11, shown in blue



**USGS Historical File Topographic Division**

ROAD CLASSIFICATION	
Heavy-duty	Light-duty
Medium-duty	Unimproved dirt
U. S. Route	State Route

QUADRANGLE LOCATION: IDAHO, OREGON, WASHINGTON, D. C.—1965  
N4415—W11700/15

THIS MAP COMPLIES WITH NATIONAL MAP ACCURACY STANDARDS  
FOR SALE BY U. S. GEOLOGICAL SURVEY, DENVER, COLORADO 80225 OR WASHINGTON, D. C. 20242  
A FOLDER DESCRIBING TOPOGRAPHIC MAPS AND SYMBOLS IS AVAILABLE ON REQUEST

FILE COPY  
TOPOGRAPHIC DIVISION

1952  
AMS 2572 1—SERIES V793

001 221985

2690