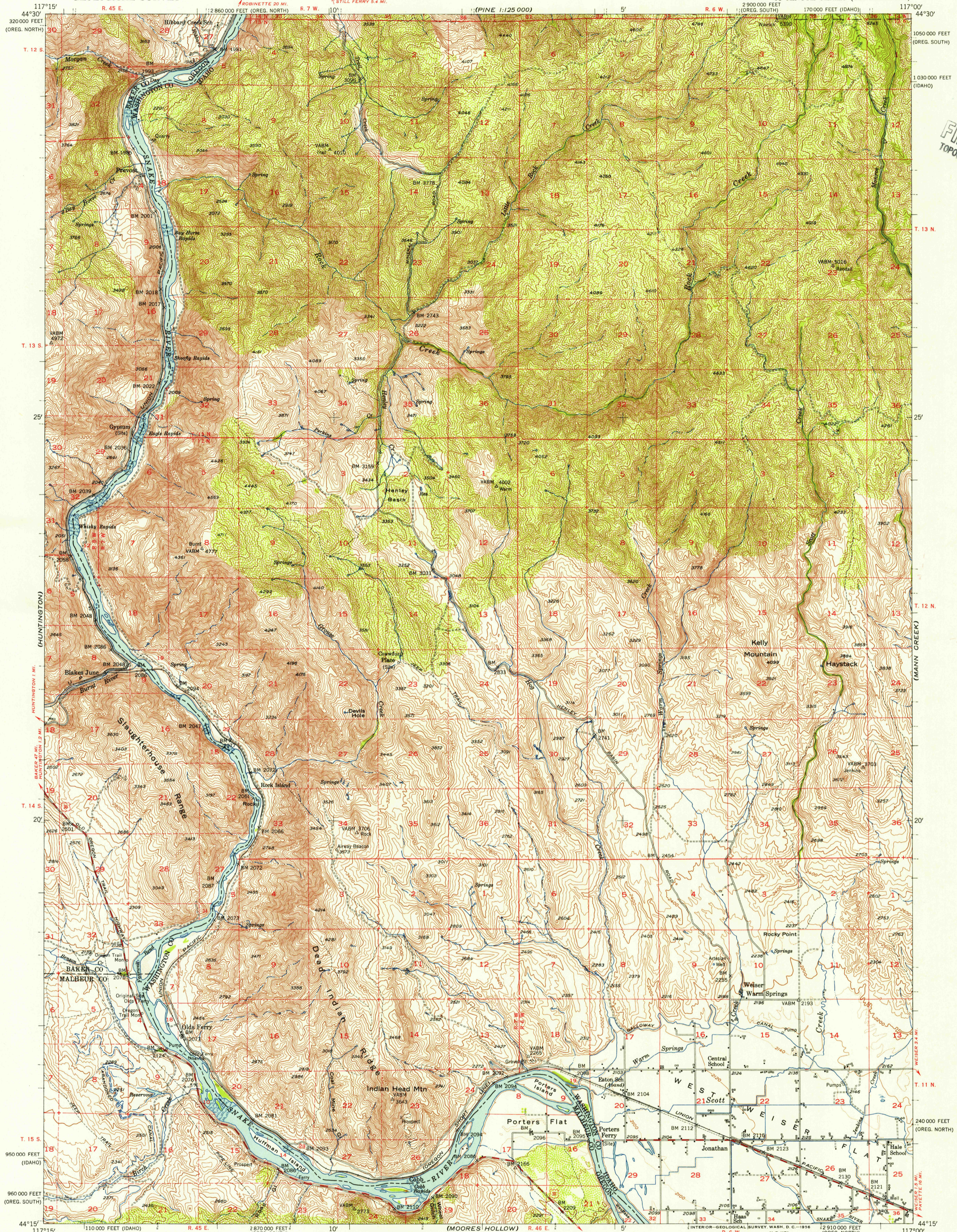


UNITED STATES
DEPARTMENT OF THE INTERIOR
GEOLOGICAL SURVEY

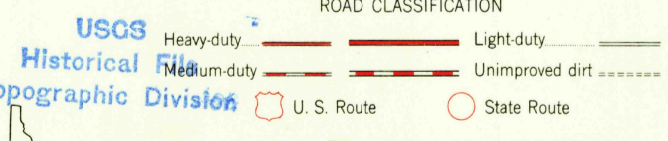
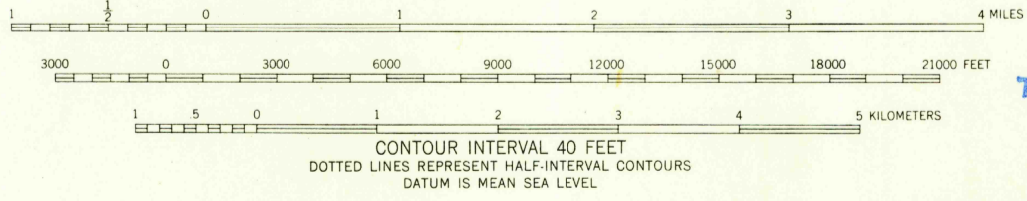
OLDS FERRY QUADRANGLE
IDAHO-OREGON
15 MINUTE SERIES (TOPOGRAPHIC)



U.S.G.S.
FILE COPY
TOPOGRAPHIC DIVISION

U.S.G.S.
FILE COPY
TOPOGRAPHIC DIVISION

Mapped, edited, and published by the Geological Survey
Control by USGS and USC&GS
Topography from aerial photographs by multiplex methods
and by plane-table surveys 1952. Aerial photographs taken 1950
Polyconic projection. 1927 North American datum
10,000-foot grids based on Idaho coordinate system, west zone
and Oregon coordinate system, north and south zones
Dashed land lines indicate approximate locations



This area is also partially covered by 1:24,000
scale maps of Olds Ferry NW, Olds Ferry, and
Olds Ferry SE 7.5 minute quadrangles
OLDS FERRY, IDAHO-OREG.
N4415-W11700/15

THIS MAP COMPLIES WITH NATIONAL MAP ACCURACY STANDARDS
FOR SALE BY U.S. GEOLOGICAL SURVEY, FEDERAL CENTER, DENVER, COLORADO OR WASHINGTON 25, D. C.
A FOLDER DESCRIBING TOPOGRAPHIC MAPS AND SYMBOLS IS AVAILABLE ON REQUEST

1952

MAR 5 1956

2505