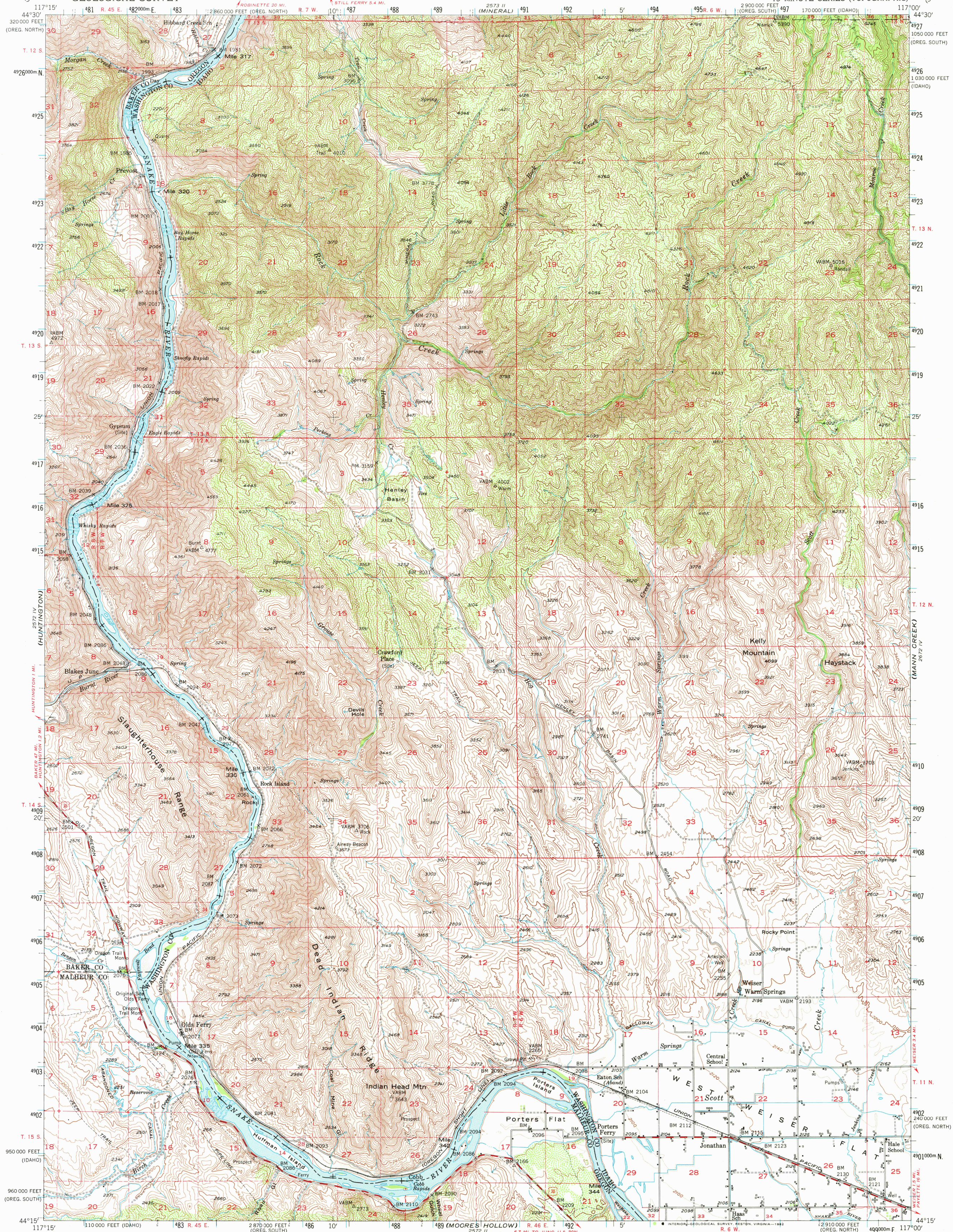


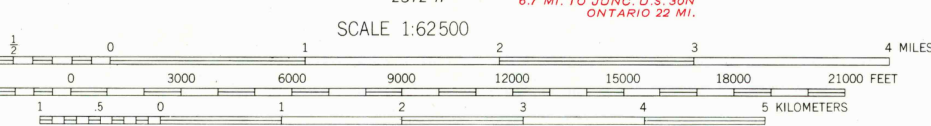
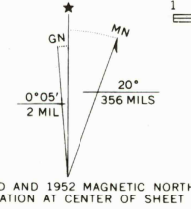
UNITED STATES
DEPARTMENT OF THE INTERIOR
GEOLOGICAL SURVEY

OLDS FERRY QUADRANGLE
IDAHO-OREGON
15 MINUTE SERIES (TOPOGRAPHIC)



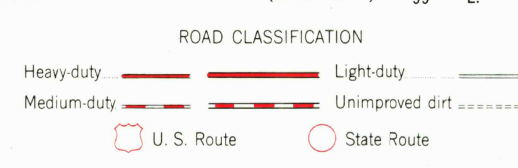
Mapped, edited, and published by the Geological Survey

Control by USGS and USC&GS
Topography from aerial photographs by multiplex methods and by plane-table surveys 1952. Aerial photographs taken 1950
Polyconic projection. 1927 North American datum
10,000-foot grids based on Idaho coordinate system, west zone and Oregon coordinate system, north and south zones
Dashed land lines indicate approximate locations
1000-meter Universal Transverse Mercator grid ticks, zone 11, shown in blue
To place on the predicted North American Datum 1983 move the projection lines 16 meters north and 79 meters east



CONTOUR INTERVAL 40 FEET
DOTTED LINES REPRESENT HALF-INTERVAL CONTOURS
NATIONAL GEODETIC VERTICAL DATUM OF 1929

THIS MAP COMPLIES WITH NATIONAL MAP ACCURACY STANDARDS
FOR SALE BY U.S. GEOLOGICAL SURVEY, DENVER, COLORADO 80225, OR RESTON, VIRGINIA 22092
A FOLDER DESCRIBING TOPOGRAPHIC MAPS AND SYMBOLS IS AVAILABLE ON REQUEST



This area is also partially covered by 1:24,000 scale maps of Olds Ferry NW, Olds Ferry, and Olds Ferry SE 7.5 minute quadrangles
OLDS FERRY, IDAHO-OREG.
N4415-W11700/15
1952

DMA 2572 I-SERIES V793

NOV 15 1982

2600