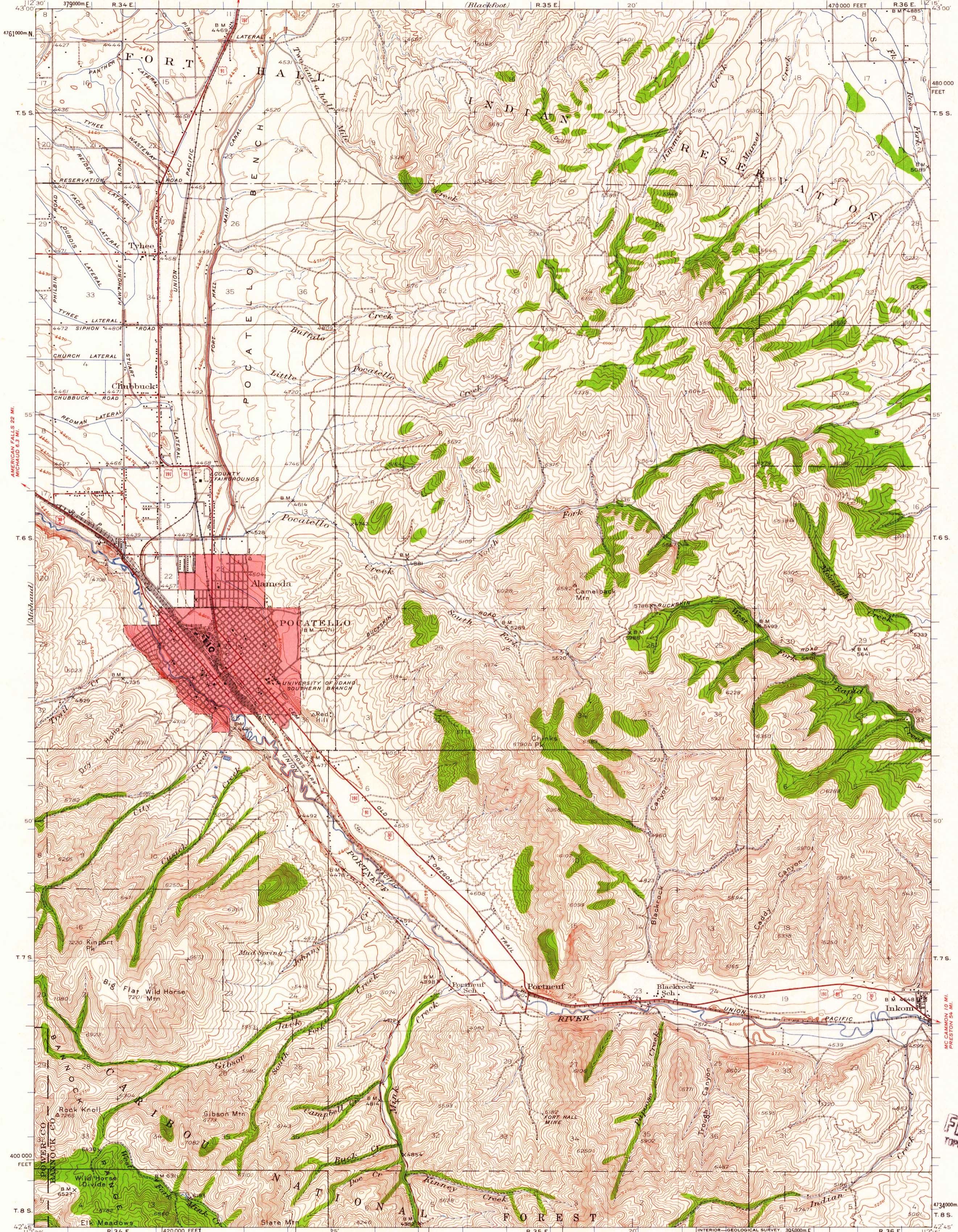


UNITED STATES
DEPARTMENT OF THE INTERIOR
GEOLOGICAL SURVEY

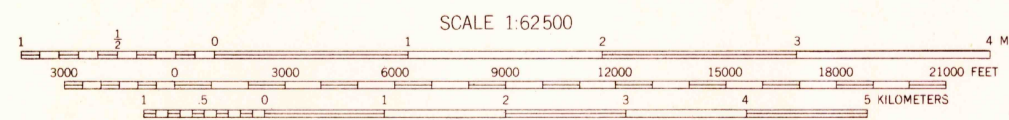
IDAHO
POCATELLO QUADRANGLE
15-MINUTE SERIES
1470000 FEET R.36 E. 12' 15"



Topography by C.N. Mortenson, F.H. Purdy, and Office of Indian Affairs Surveyed in 1936 and 1937
Red tint indicates area in which only landmark buildings are shown

ROAD CLASSIFICATION
Heavy-duty ——— Light-duty ———
Medium-duty ——— Unimproved dirt ———
U.S. Route

APPROXIMATE MEAN MAGNETIC DECLINATION, 1937



CONTOUR INTERVALS 10 AND 50 FEET
CHANGING ON THE 4500 FOOT CONTOUR
DATUM IS MEAN SEA LEVEL

FOR SALE BY U. S. GEOLOGICAL SURVEY, DENVER 25, COLORADO OR WASHINGTON 25, D. C.
A FOLDER DESCRIBING TOPOGRAPHIC MAPS AND SYMBOLS IS AVAILABLE ON REQUEST

USGS
Historical File
Topographic Division

POCATELLO, IDAHO
N 4245-W 11215/15
1937

U.S.G.S.
FILE COPY
TOPOGRAPHIC DIVISION

FEB 18 1960

2040