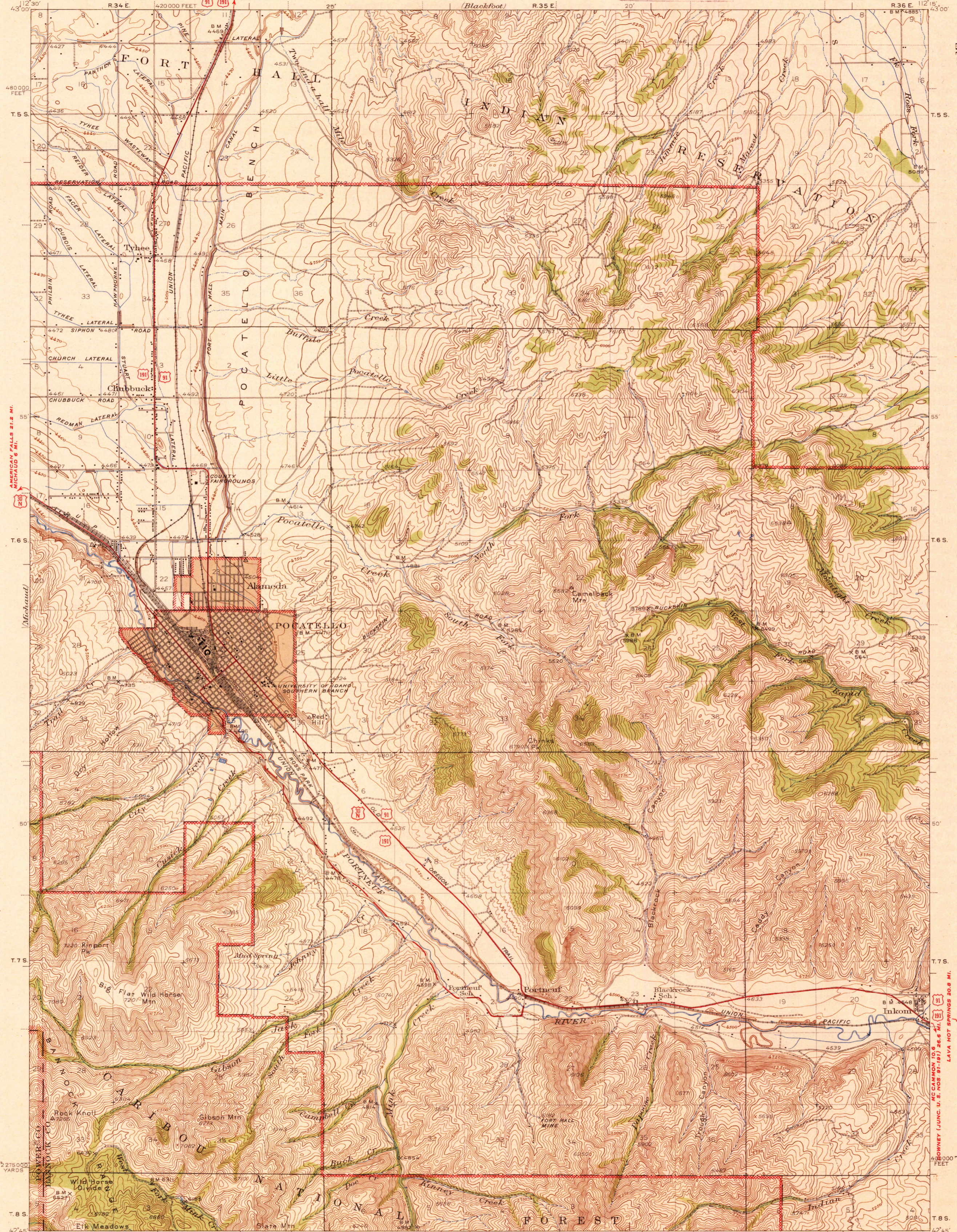


BLACKFOOT 14.3 MI.  
FORT HALL 2.3 MI.



AMERICAN FALLS 21.2 MI.  
NICHOLD 6 MI.

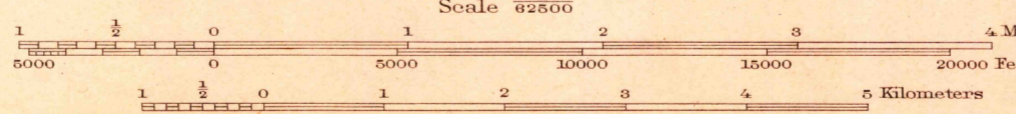
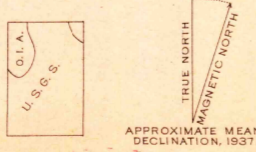
Michael

Big Flat Wild Horse 720' Min

Wild Horse Divide 2  
Eik Meadows

15 Miles  
T.5 S.  
T.6 S.  
T.7 S.  
T.8 S.

Topography by C.N. Mortenson  
F.H. Purdy, and Office of Indian Affairs  
Surveyed in 1936 and 1937  
Gray tint indicates area in which only  
landmark buildings are shown



Contour intervals 10 and 50 feet  
changing on the 4500 foot contour  
Datum is mean sea level

USGS  
Historical File  
Topographic Division

Polyconic projection, 1927 North American datum  
5000 yard grid based on U.S. zone system, F  
10000 foot grid based on Idaho (East)  
Rectangular coordinate system

ROUTES USUALLY TRAVELED  
HARD IMPERVIOUS SURFACES  
OTHER SURFACE IMPROVEMENTS  
U. S. ROUTE 1943 STATE ROUTE

POCATELLO, IDAHO  
Edition of 1944

N 4245 - W 11215/15

U. S. G. S.  
FILE COPY  
Inspection and Editing