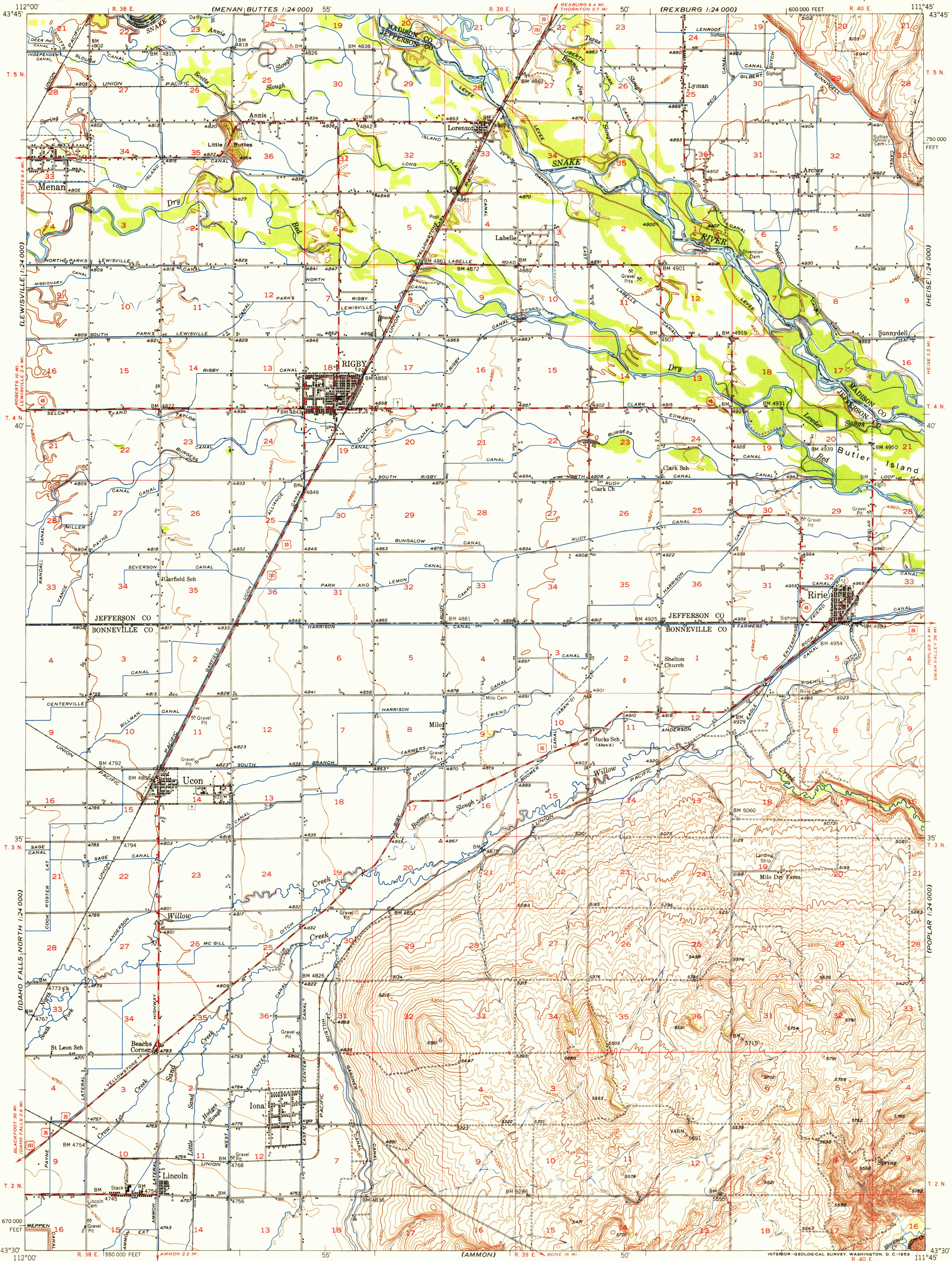
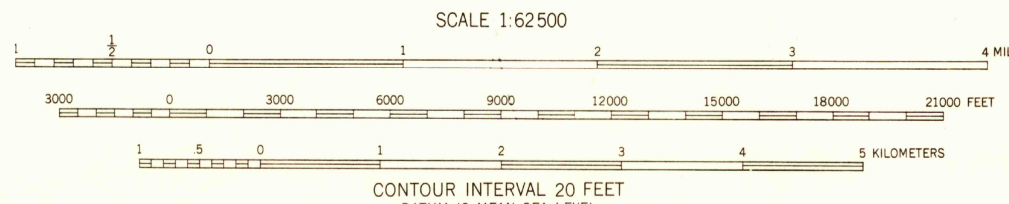


MOODY 1:24 000



Mapped, edited, and published by the Geological Survey
Control by USGS and USC&GS
Topography from aerial photographs by multiplex methods
and by plane-table surveys 1948-1950. Aerial photographs taken 1946
Polyconic projection. 1927 North American datum
10,000-foot grid based on Idaho coordinate system, east zone
Dashed land lines indicate approximate locations.



ROAD CLASSIFICATION
Heavy-duty 4 LANE 16 LANE Light-duty
Medium-duty 4 LANE 16 LANE Unimproved dirt
U. S. Route State Route

This area is also covered by 1:24 000 scale maps of Ririe,
Rigby, Ucon, and Rigby SE 7.5 minute quadrangles.
RIGBY, IDAHO
N4330-W1145/15

1950

THIS MAP COMPLIES WITH NATIONAL MAP ACCURACY STANDARDS
FOR SALE BY U. S. GEOLOGICAL SURVEY, FEDERAL CENTER, DENVER, COLORADO OR WASHINGTON 25, D. C.
A FOLDER DESCRIBING TOPOGRAPHIC MAPS AND SYMBOLS IS AVAILABLE ON REQUEST

IDAHO FALLS SOUTH
1:24 000

HELL CREEK