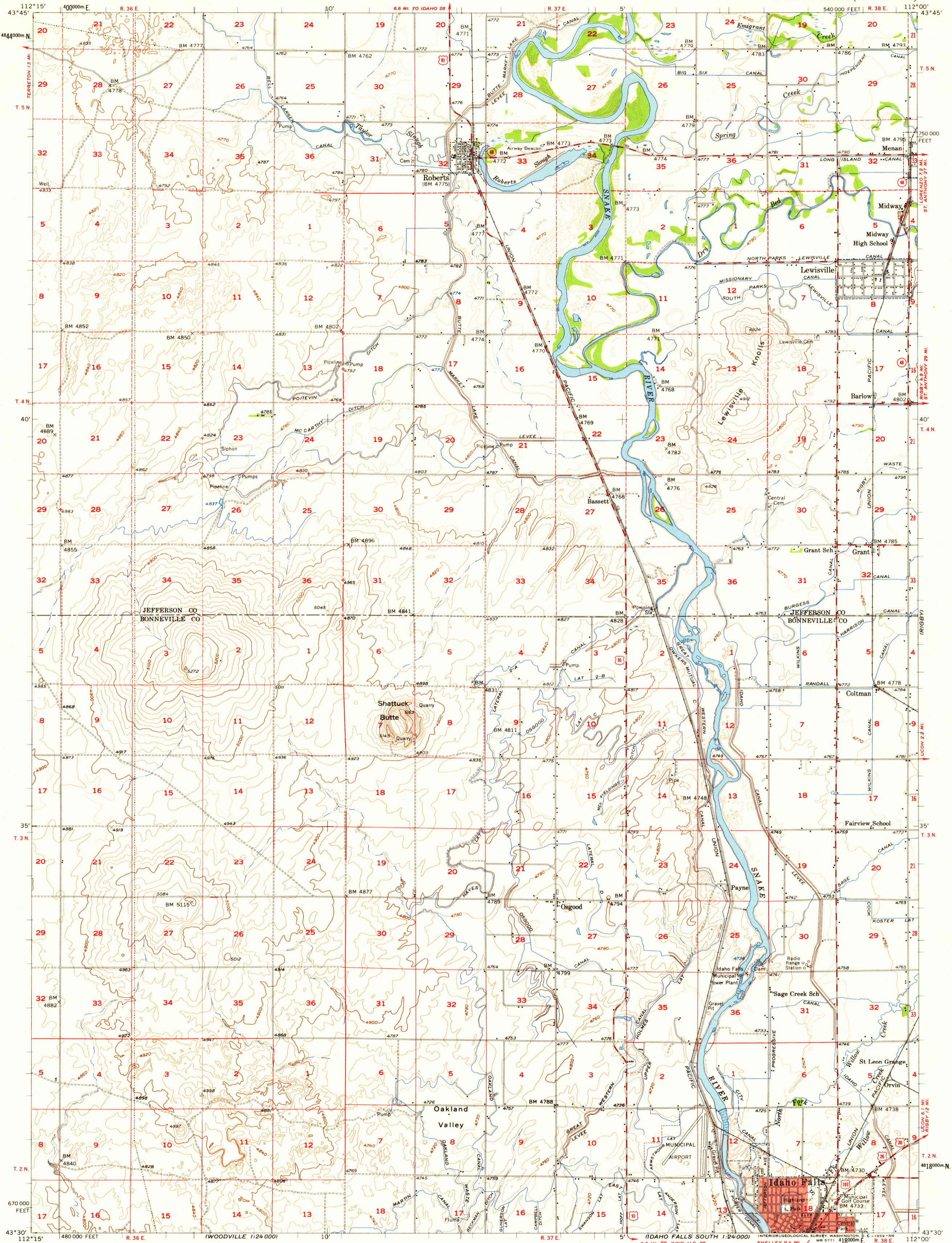
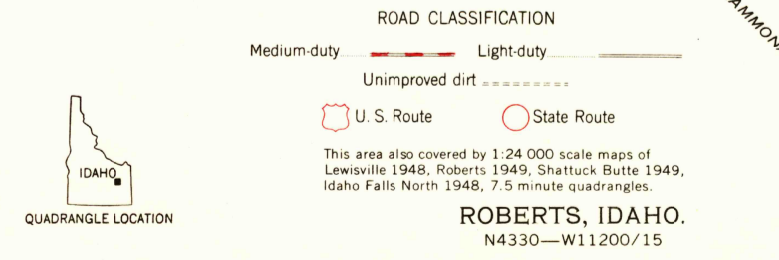
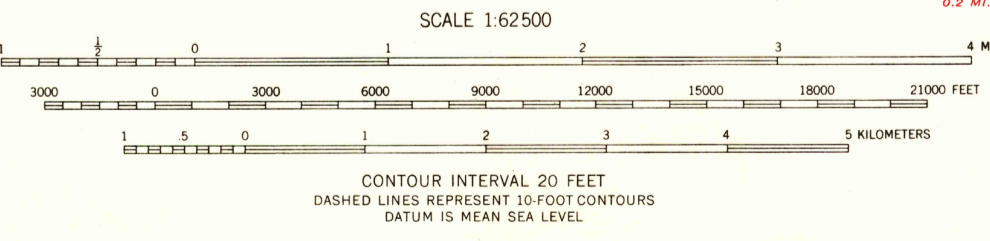
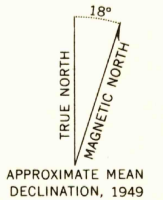


(MENAID BUTTES)
1:24,000



Mapped, edited, and published by the Geological Survey
Control by USGS, USC&GS, and USCE
Compiled in 1958 from 1:24 000 scale maps of the
Lewisville, Roberts, Shattuck Butte, and Idaho Falls
North 7.5 minute quadrangles, surveyed 1948-49
Culture and drainage by multiplex methods
from aerial photographs taken 1946
Topography by planetable surveys 1948-49
Polyconic projection. 1927 North American datum
10,000-foot grid based on Idaho coordinate system, east zone
1000-meter Universal Transverse Mercator grid ticks,
zone 12, shown in blue
Red tint indicates areas in which only landmark buildings are shown
Dashed land lines indicate approximate location



THIS MAP COMPLIES WITH NATIONAL MAP ACCURACY STANDARDS
FOR SALE BY U. S. GEOLOGICAL SURVEY, DENVER 2, COLORADO OR WASHINGTON 25, D. C.
A FOLDER DESCRIBING TOPOGRAPHIC MAPS AND SYMBOLS IS AVAILABLE ON REQUEST

ROBERTS, IDAHO.
N4330--W11200/15
1949