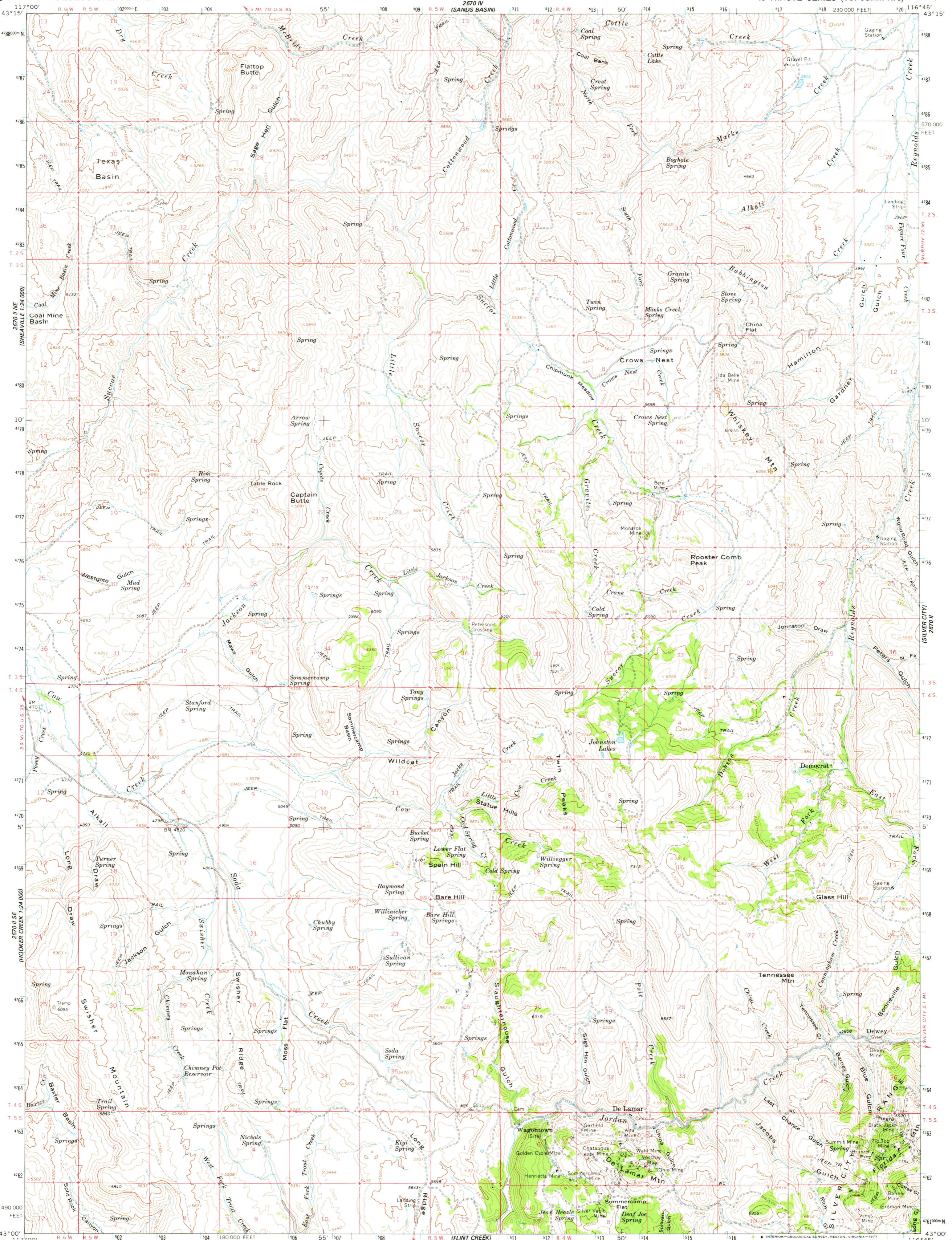


UNITED STATES
DEPARTMENT OF THE INTERIOR
GEOLOGICAL SURVEY

ROOSTER COMB PEAK QUADRANGLE
IDAHO-OWYHEE CO.
15 MINUTE SERIES (TOPOGRAPHIC)

2570 II SE
(HOOKER CREEK)
1:24,000

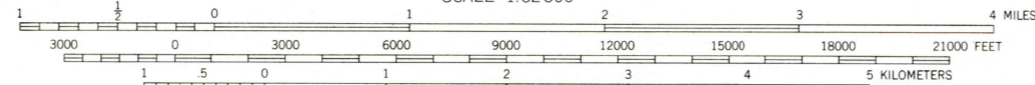
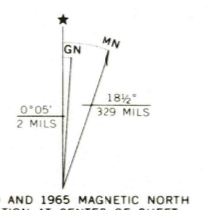
2570 I SW
(WILSON PEAK)
1:24,000



2589 NE
(JORDAN VALLEY)
1:24,000

2589 SW
(TRANGE)
1:24,000

Mapped, edited, and published by the Geological Survey
Control by USGS and USC&GS
Topography by photogrammetric methods from aerial
photographs taken 1963. Field checked 1965
Polyconic projection. 1927 North American datum
10,000-foot grid based on Idaho coordinate system,
west zone
1000-meter Universal Transverse Mercator grid ticks,
zone 11, shown in blue



CONTOUR INTERVAL 80 FEET
DOTTED LINES REPRESENT 40-FOOT CONTOURS
NATIONAL GEODETIC VERTICAL DATUM OF 1929

THIS MAP COMPLIES WITH NATIONAL MAP ACCURACY STANDARDS
FOR SALE BY U.S. GEOLOGICAL SURVEY, DENVER, COLORADO 80225, OR RESTON, VIRGINIA 22092
A FOLDER DESCRIBING TOPOGRAPHIC MAPS AND SYMBOLS IS AVAILABLE ON REQUEST



ROAD CLASSIFICATION
Light duty ————— Unimproved dirt - - - - -

ROOSTER COMB PEAK, IDAHO
N4300-W11645/15

1965
AMS 2670 III-SERIES V793

USGS
Historical File
Topographic Division

3300
JUL 12 1977