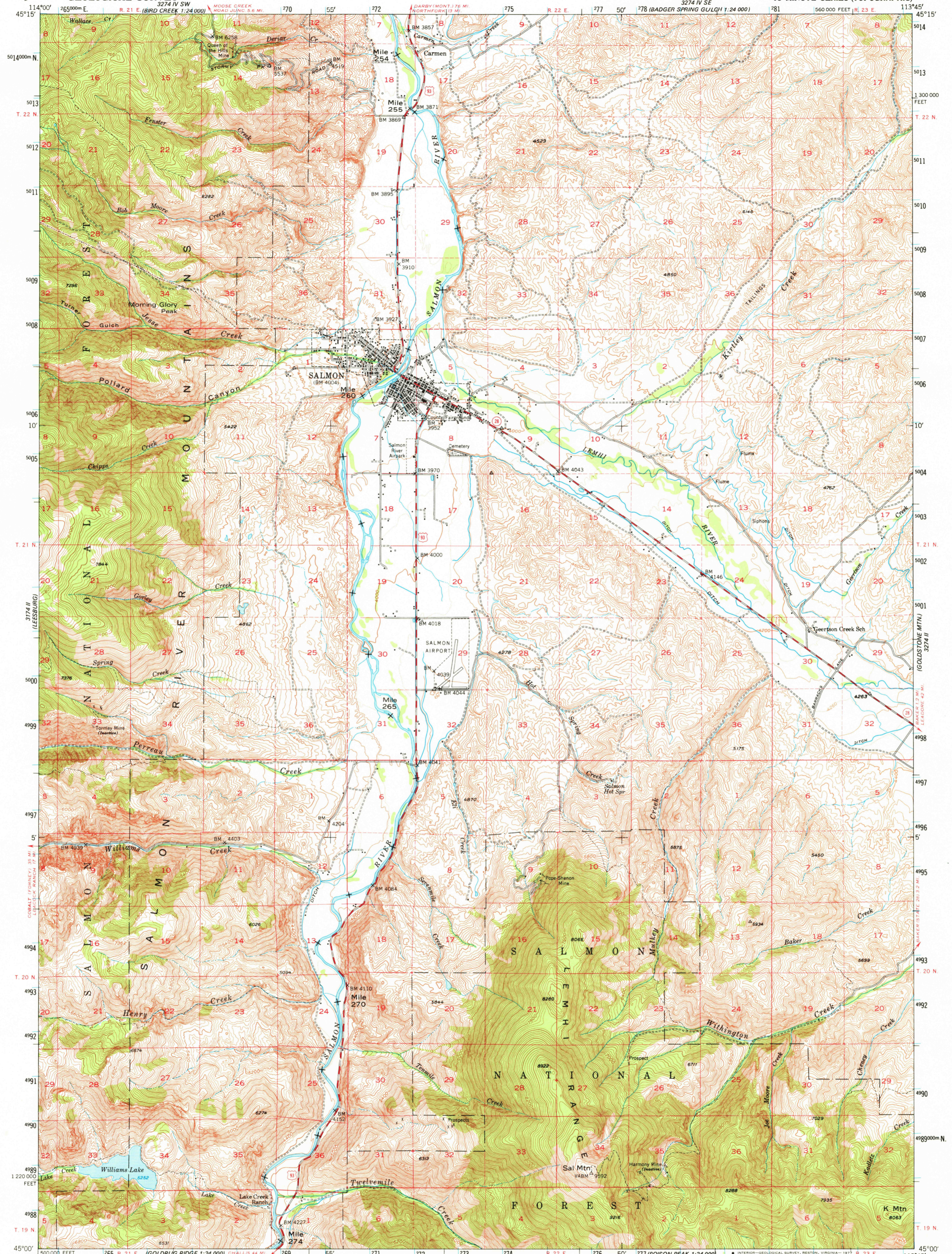


3274 I (LEESBURG)
1:24,000

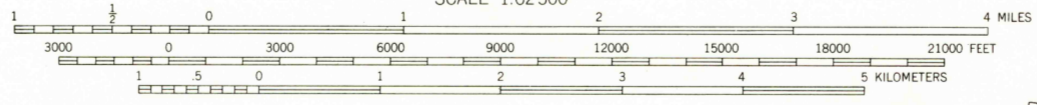
UNITED STATES
DEPARTMENT OF THE INTERIOR
GEOLOGICAL SURVEY

SALMON QUADRANGLE
IDAHO-LEMHI CO.
15 MINUTE SERIES (TOPOGRAPHIC)

3274 I (SW
YOUNG PEAK)
1:24,000



Mapped, edited, and published by the Geological Survey
Control by USGS and USC&GS
Topography from aerial photographs by multiplex methods
Aerial photographs taken 1946. Field check 1950
Polyconic projection. 1927 North American datum
10,000-foot grid based on Idaho coordinate system,
central zone
Dashed land lines indicate approximate location
Unchecked elevations are shown in brown
1000-meter Universal Transverse Mercator grid ticks,
zone 12, shown in blue



SCALE 1:62,500
CONTOUR INTERVAL 40 FEET
DOTTED LINES REPRESENT HALF-INTERVAL CONTOURS
NATIONAL GEODETIC VERTICAL DATUM OF 1929
THIS MAP COMPLIES WITH NATIONAL MAP ACCURACY STANDARDS.
FOR SALE BY U. S. GEOLOGICAL SURVEY, DENVER, COLORADO 80225, OR RESTON, VIRGINIA 22092
A FOLDER DESCRIBING TOPOGRAPHIC MAPS AND SYMBOLS IS AVAILABLE ON REQUEST

ROAD CLASSIFICATION

Medium-duty	Light-duty
Unimproved dirt	
U. S. Route	State Route



SALMON, IDAHO
N4500-W11345/15

USGS
Historical File
Topographic Division

1950
AMS 3274 III-SERIES V793

4800
JUN 21 1978