

Mapped, edited, and published by the Geological Survey

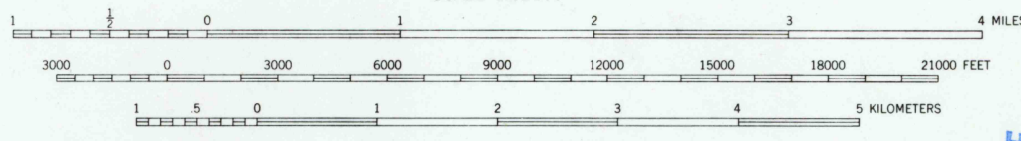
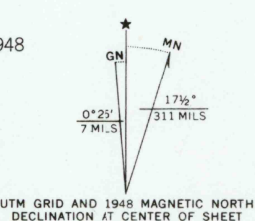
Control by USGS and USC&GS

Topography from aerial photographs by Mahan Plotter 1947-1948 and by plane-table surveys 1946

Aerial photographs taken 1945

Polyconic projection, 1927 North American datum 10000 foot grid based on Idaho coordinate system, east zone

1000-meter Universal Transverse Mercator grid ticks, zone 12, shown in blue



CONTOUR INTERVAL 50 FEET DATUM IS MEAN SEA LEVEL

USGS Historical File Topographic Division

ROAD CLASSIFICATION

HARD-SURFACE ALL WEATHER ROADS	DRY WEATHER ROADS
Heavy-duty ——— LANE LANE	Improved dirt ———
Medium-duty ——— LANE LANE	Unimproved dirt ———
Loose-surface, graded, or narrow hard-surface ———	
U. S. Route	State Route

SODA SPRINGS, IDAHO N4230-W11130/15

DEC 3 1971

THIS MAP IS AVAILABLE IN BOTH SHADED RELIEF AND CONTOUR EDITIONS THIS MAP COMPLIES WITH NATIONAL MAP ACCURACY STANDARDS FOR SALE BY U. S. GEOLOGICAL SURVEY, DENVER, COLORADO 80225 OR WASHINGTON, D. C. 20242 A FOLDER DESCRIBING TOPOGRAPHIC MAPS AND SYMBOLS IS AVAILABLE ON REQUEST

1948 AMS 3669 II - SERIES V793

3195