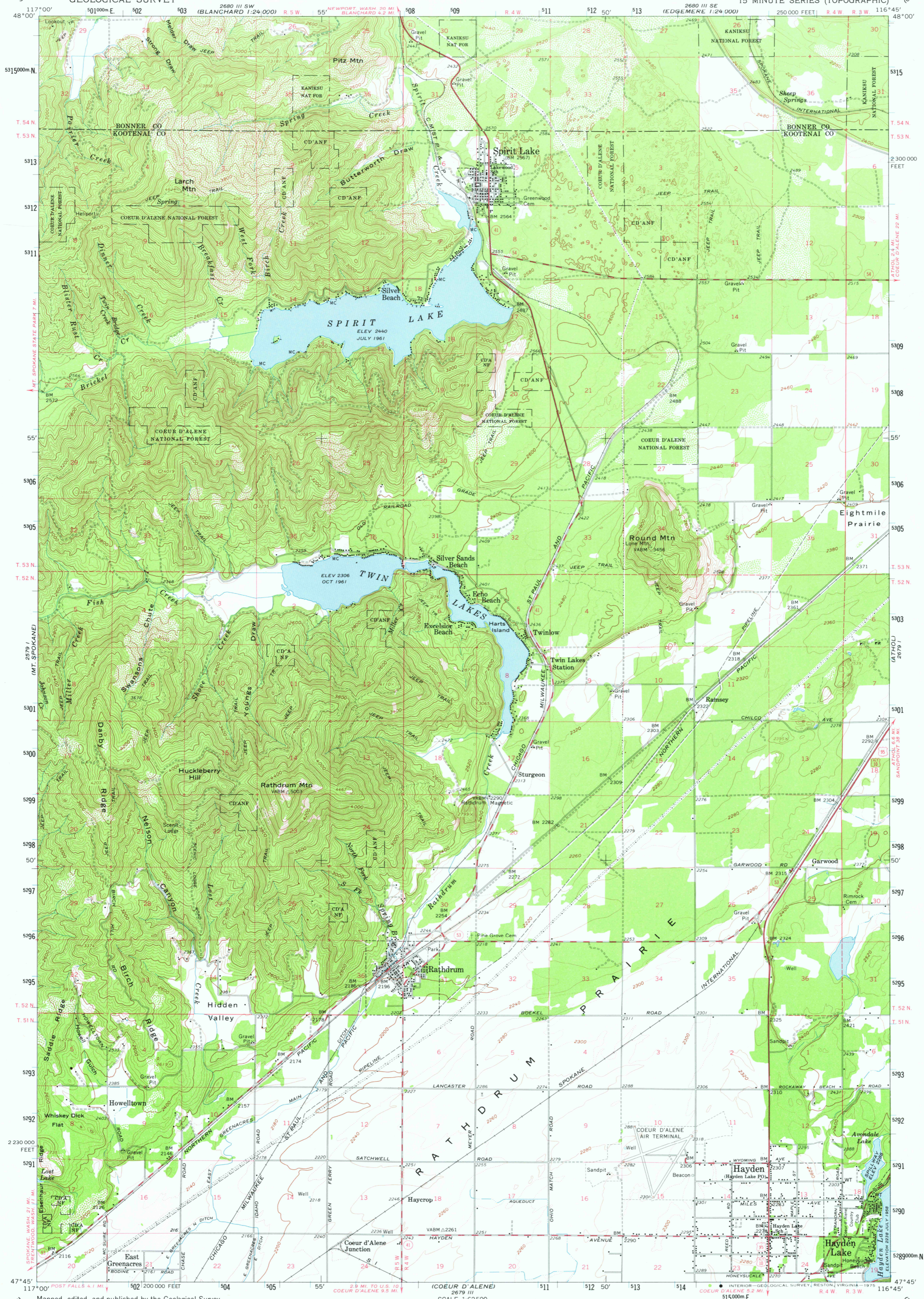
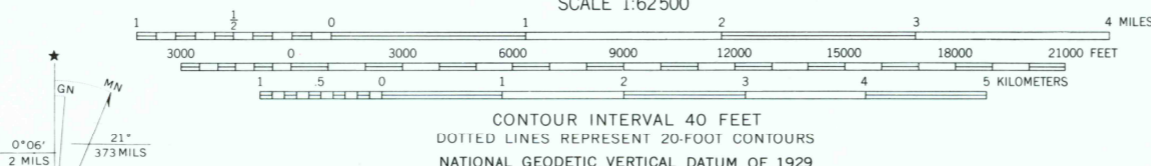


UNITED STATES
DEPARTMENT OF THE INTERIOR
GEOLOGICAL SURVEY

SPIRIT LAKE QUADRANGLE
IDAHO
15 MINUTE SERIES (TOPOGRAPHIC)



Mapped, edited, and published by the Geological Survey
Control by USGS, USC&GS, and U. S. Forest Service
Compiled in 1962 from 1:24 000-scale maps dated 1961
Polyconic projection. 1927 North American datum
10,000-foot grid based on Idaho coordinate system, west zone
1000-meter Universal Transverse Mercator grid ticks,
zone 11, shown in blue



ROAD CLASSIFICATION
Heavy-duty ——— Light-duty ———
Medium-duty ——— Unimproved dirt ———
U. S. Route ——— State Route ———



SPRIT LAKE, IDAHO
N4745—W11645/15

1961

AMS 2679 IV—SERIES V793

USGS
Historical File
Topographic Division

FEB 7 1975

2725