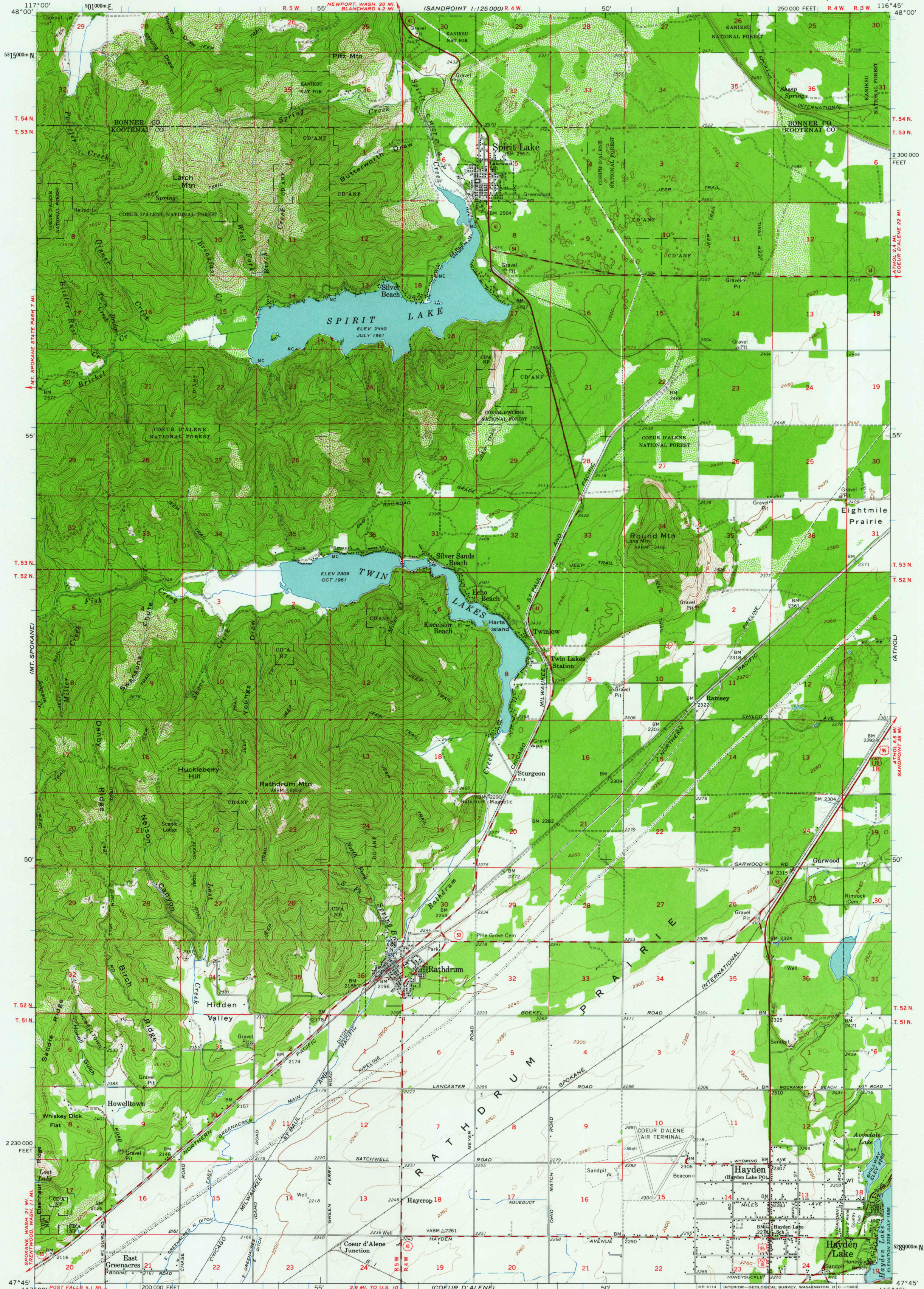


(NEWPORT)
1:125 000

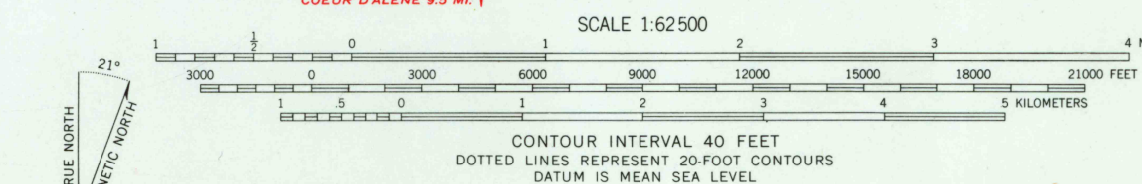
UNITED STATES
DEPARTMENT OF THE INTERIOR
GEOLOGICAL SURVEY

SPIRIT LAKE QUADRANGLE
IDAHO
15 MINUTE SERIES (TOPOGRAPHIC)

(SANDPOINT)
1:125 000



Mapped, edited, and published by the Geological Survey
Control by USGS, USC&GS, and U. S. Forest Service
Compiled in 1962 from 1:24 000-scale maps dated 1961
Polyconic projection. 1927 North American datum
10,000-foot grid based on Idaho coordinate system, west zone
1000-meter Universal Transverse Mercator grid ticks,
zone 11, shown in blue



ROAD CLASSIFICATION
Heavy-duty ——— Light-duty ———
Medium-duty ——— Unimproved dirt - - - -
U.S. Route State Route
This area also covered by 7.5-minute, 1:24 000-scale
maps: Spirit Lake East 1961, Spirit Lake West 1961,
Rathdrum 1961, and Hayden 1961

QUADRANGLE LOCATION
IDAHO
SPIRIT LAKE, IDAHO
N4745-W11645/15
1961

THIS MAP COMPLIES WITH NATIONAL MAP ACCURACY STANDARDS
FOR SALE BY U.S. GEOLOGICAL SURVEY, DENVER 25, COLORADO OR WASHINGTON 25, D. C.
A FOLDER DESCRIBING TOPOGRAPHIC MAPS AND SYMBOLS IS AVAILABLE ON REQUEST

JUN - 7 1963
HISTORICAL

2190