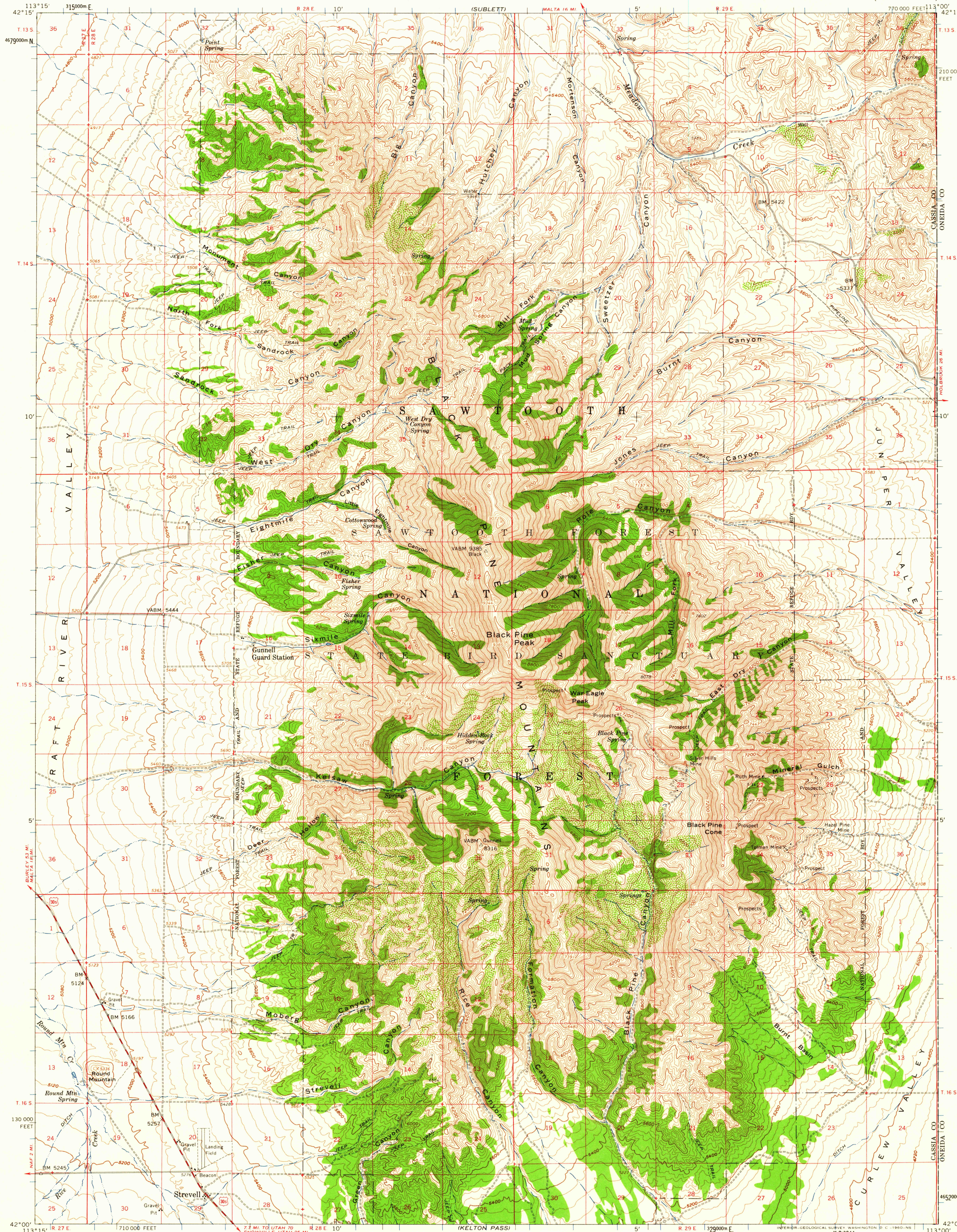
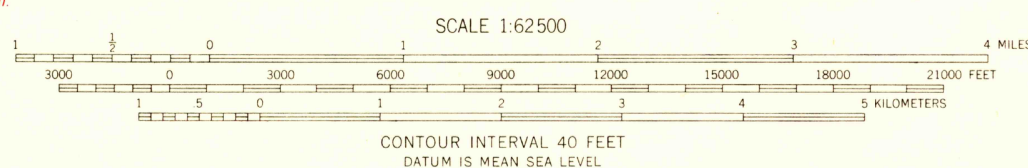
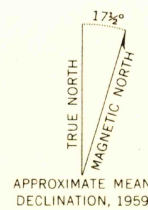


UNITED STATES
DEPARTMENT OF THE INTERIOR
GEOLOGICAL SURVEY

STREVELL QUADRANGLE
IDAHO
15 MINUTE SERIES (TOPOGRAPHIC)



Mapped, edited, and published by the Geological Survey
Control by USGS and USC&GS
Topography from aerial photographs by photogrammetric methods
Aerial photographs taken 1954. Field check 1958 and 1959
Polyconic projection. 1927 North American datum
10,000-foot grid based on Idaho coordinate system, central zone
1000-meter Universal Transverse Mercator grid ticks,
zone 12, shown in blue
Unchecked elevations are shown in brown



ROAD CLASSIFICATION
Medium-duty ——— Light-duty ———
Unimproved dirt ——— U.S. Route ———



STREVELL, IDAHO
N4200—W11300/15
1959

HISTORICAL
U.S.G.S.
FILE COPY
TOPOGRAPHIC DIVISION

OCT 14 1960
HISTORICAL

2550