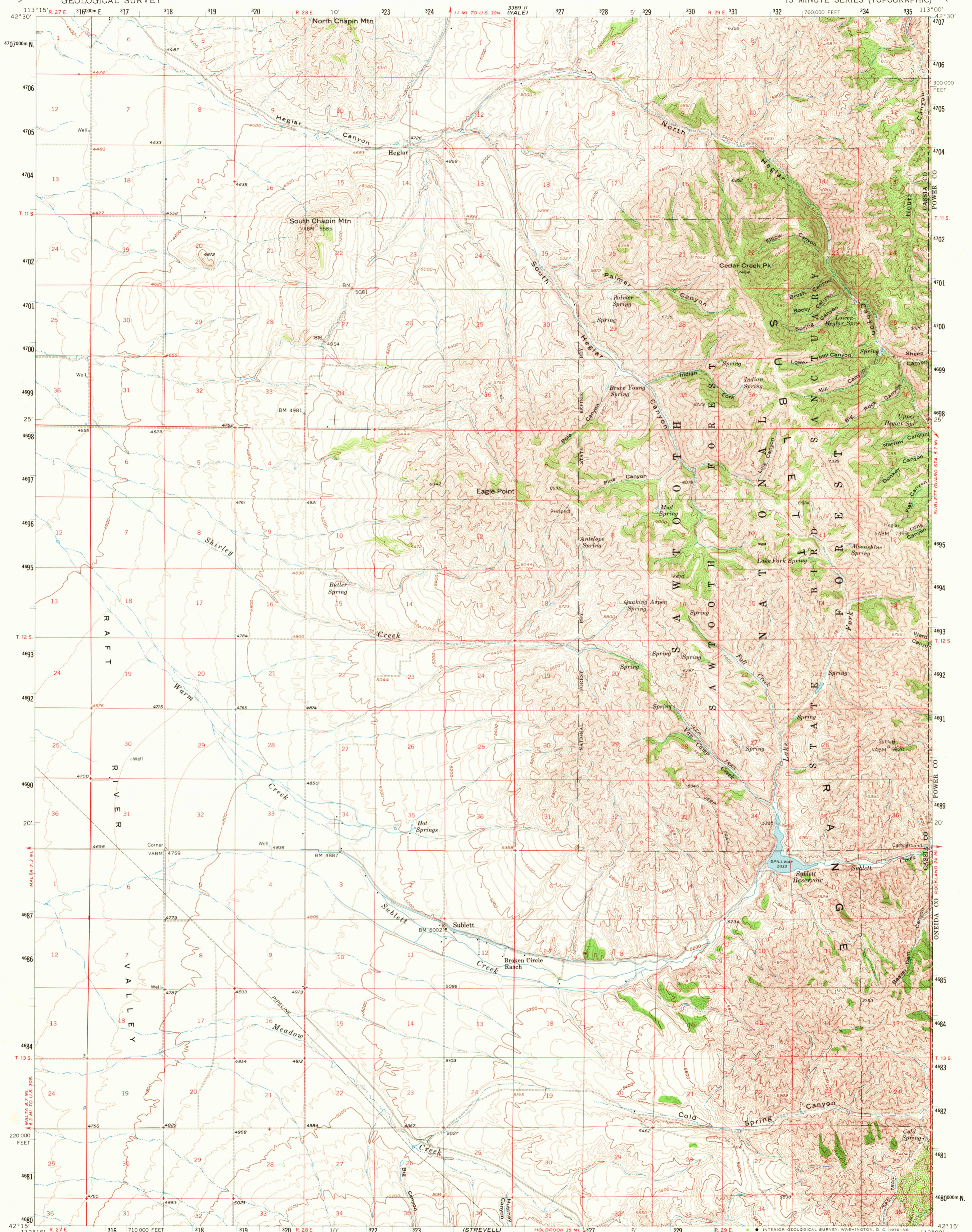
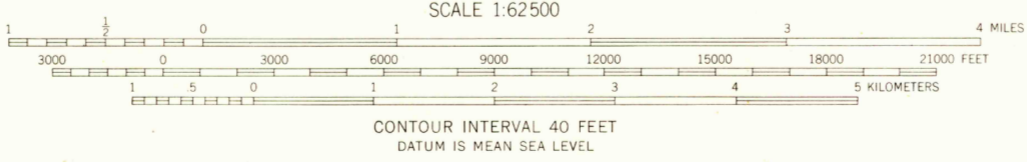
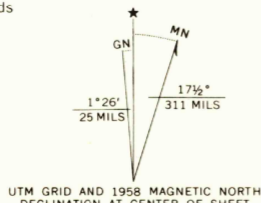


LAKE 289 II
WILCOFF

3469 II
ROCKLAND



Mapped, edited, and published by the Geological Survey
Control by USGS and USC&GS
Topography from aerial photographs by photogrammetric methods
Aerial photographs taken in 1954. Field check 1958
Polyconic projection. 1927 North American datum
10,000-foot grid based on Idaho coordinate system,
central zone
1,000-meter Universal Transverse Mercator grid ticks,
zone 12, shown in blue
Dashed land lines indicate approximate locations
Unchecked elevations are shown in brown



THIS MAP COMPLIES WITH NATIONAL MAP ACCURACY STANDARDS
FOR SALE BY U.S. GEOLOGICAL SURVEY, DENVER, COLORADO 80225 OR WASHINGTON, D.C. 20242
A FOLDER DESCRIBING TOPOGRAPHIC MAPS AND SYMBOLS IS AVAILABLE ON REQUEST

USGS
Historical File
Topographic Division

ROAD CLASSIFICATION
Light duty
Unimproved dirt

U.S.G.S.
FILE COPY
TOPOGRAPHIC DIVISION

QUADRANGLE LOCATION
SUBLETT, IDAHO
N42°15'—W113°00'

AMS 3368 I—SERIES V793

2200
OCT 14 1970
HISTORICAL