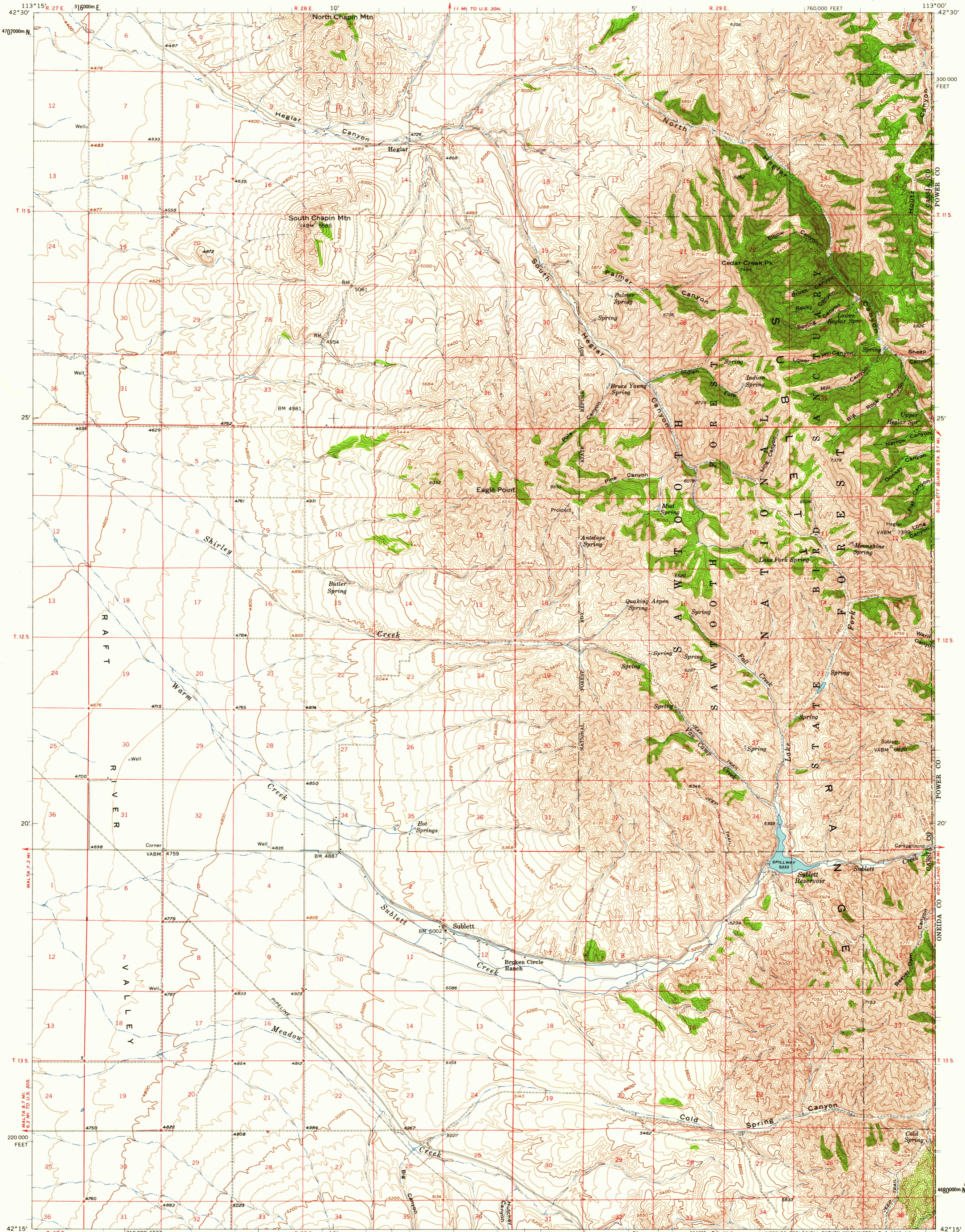
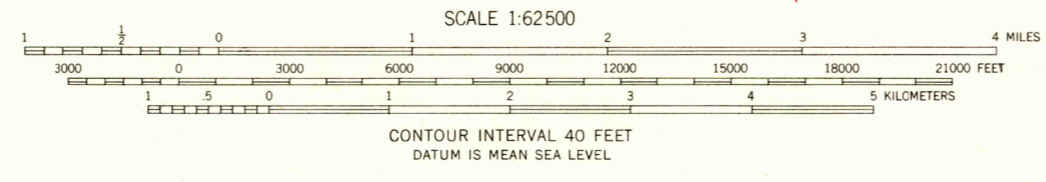
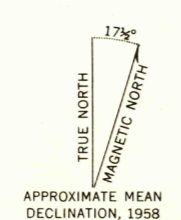


ROCKLAND



Mapped, edited, and published by the Geological Survey  
Control by USGS and USC&GS  
Topography from aerial photographs by photogrammetric methods  
Aerial photographs taken in 1954. Field check 1958  
Polyconic projection. 1927 North American datum  
10,000-foot grid based on Idaho coordinate system,  
central zone  
1000-meter Universal Transverse Mercator grid ticks,  
zone 12, shown in blue  
Dashed land lines indicate approximate locations  
Unchecked elevations are shown in brown



ROAD CLASSIFICATION  
Light duty ——— Unimproved dirt - - - - -  
USGS  
Historical File  
Topographic Division

THIS MAP COMPLEIES WITH NATIONAL MAP ACCURACY STANDARDS  
FOR SALE BY U. S. GEOLOGICAL SURVEY, DENVER 25, COLORADO OR WASHINGTON 25, D. C.  
A FOLDER DESCRIBING TOPOGRAPHIC MAPS AND SYMBOLS IS AVAILABLE ON REQUEST

SUBLETT, IDAHO  
N4215--W11300/15  
1958

U.S.G.S.  
FILE COPY  
TOPOGRAPHIC DIVISION  
HISTORICAL

DEC 21 1958

2066