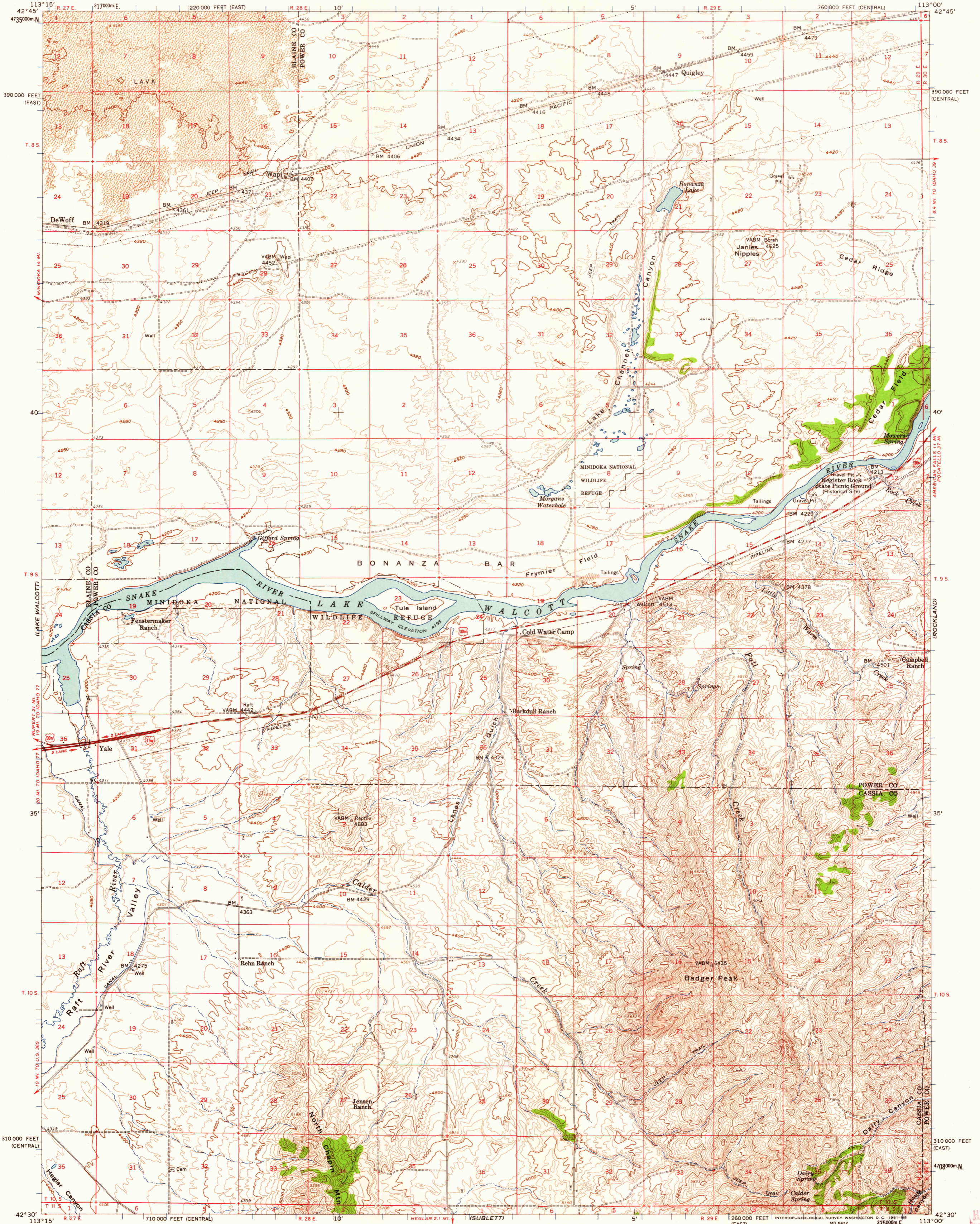
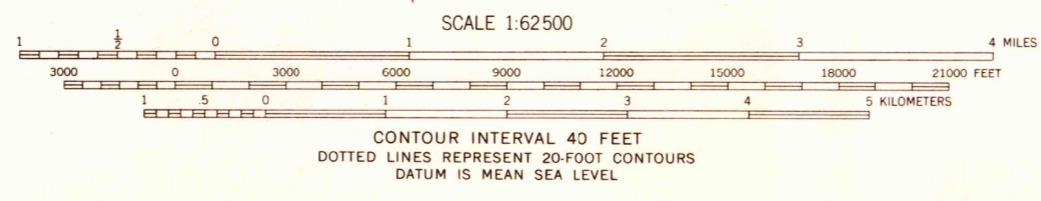
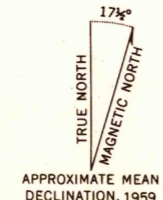


AMERICAN FALLS



Mapped, edited, and published by the Geological Survey
Control by USGS and USC&GS
Topography from aerial photographs by photogrammetric methods
Aerial photographs taken 1954. Field check 1959
Polyconic projection. 1927 North American datum
10,000-foot grids based on Idaho coordinate system,
central and east zones
1000-meter Universal Transverse Mercator grid ticks,
zone 12, shown in blue



ROAD CLASSIFICATION
Heavy-duty ——— Light-duty ———
Medium-duty ——— Unimproved dirt ———
○ Interstate Route □ U.S. Route

USGS
Historical File
Topographic Division

THIS MAP COMPLIES WITH NATIONAL MAP ACCURACY STANDARDS
FOR SALE BY U.S. GEOLOGICAL SURVEY, DENVER 25, COLORADO OR WASHINGTON 25, D. C.
A FOLDER DESCRIBING TOPOGRAPHIC MAPS AND SYMBOLS IS AVAILABLE ON REQUEST

YALE, IDAHO
N4230 - W11300/1
1959

HISTORICAL
U.S.G.S.
FILE COPY
TOPOGRAPHIC DIVISION

JUN 2 1961

1925