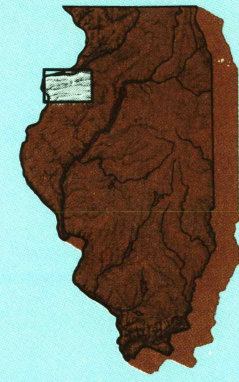


Aledo

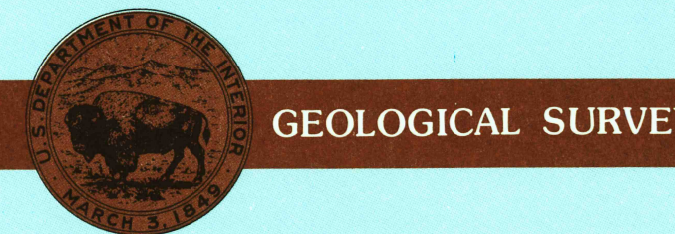
ILLINOIS-IOWA

1:100 000-scale metric
topographic map



30 X 60 MINUTE QUADRANGLE
SHOWING

- Contours and elevations in meters
- Highways, roads and other manmade structures
- Water features
- Woodland areas
- Geographic names



Produced by the United States Geological Survey
Compiled from USGS 1:24 000-scale topographic maps dated 1953-1992. Planimetry revised from aerial photographs taken 1978-1985 and other source data. Revised information not field checked. Map edited 1989.
Projection and 10 000-meter grid, zone 15
Universal Transverse Mercator
25 000-foot grid ticks based on Illinois coordinate system, west zone and Iowa coordinate system, south zone 1927 North American Datum
To place on the predicted North American Datum 1983, move the projection lines 2 meters north and 10 meters east
There may be private inholdings within the boundaries of the National or State reservations shown on this map

CONTOUR INTERVAL 10 METERS
NATIONAL GEODETIC VERTICAL DATUM OF 1929
ELEVATIONS SHOWN TO THE NEAREST METER

THIS MAP COMPLIES WITH NATIONAL MAP ACCURACY STANDARDS

CONVERSION TABLE		DECLINATION DIAGRAM	ADJOINING MAPS			
Meters	Feet		1	2	3	
1	3.2808					
2	6.5617		4	5		
3	9.8425					
4	13.1234					
5	16.4042					
6	19.6850					
7	22.9659					
8	26.2467					
9	29.5275					
10	32.8084					
To convert meters to feet multiply by 3.2808		UTM grid convergence (GN) and 1989 magnetic declination (MM) at center of map Diagram is approximate				
To convert feet to meters multiply by 0.3048						

FOR SALE BY U.S. GEOLOGICAL SURVEY
DENVER, COLORADO 80225, OR RESTON, VIRGINIA 22092

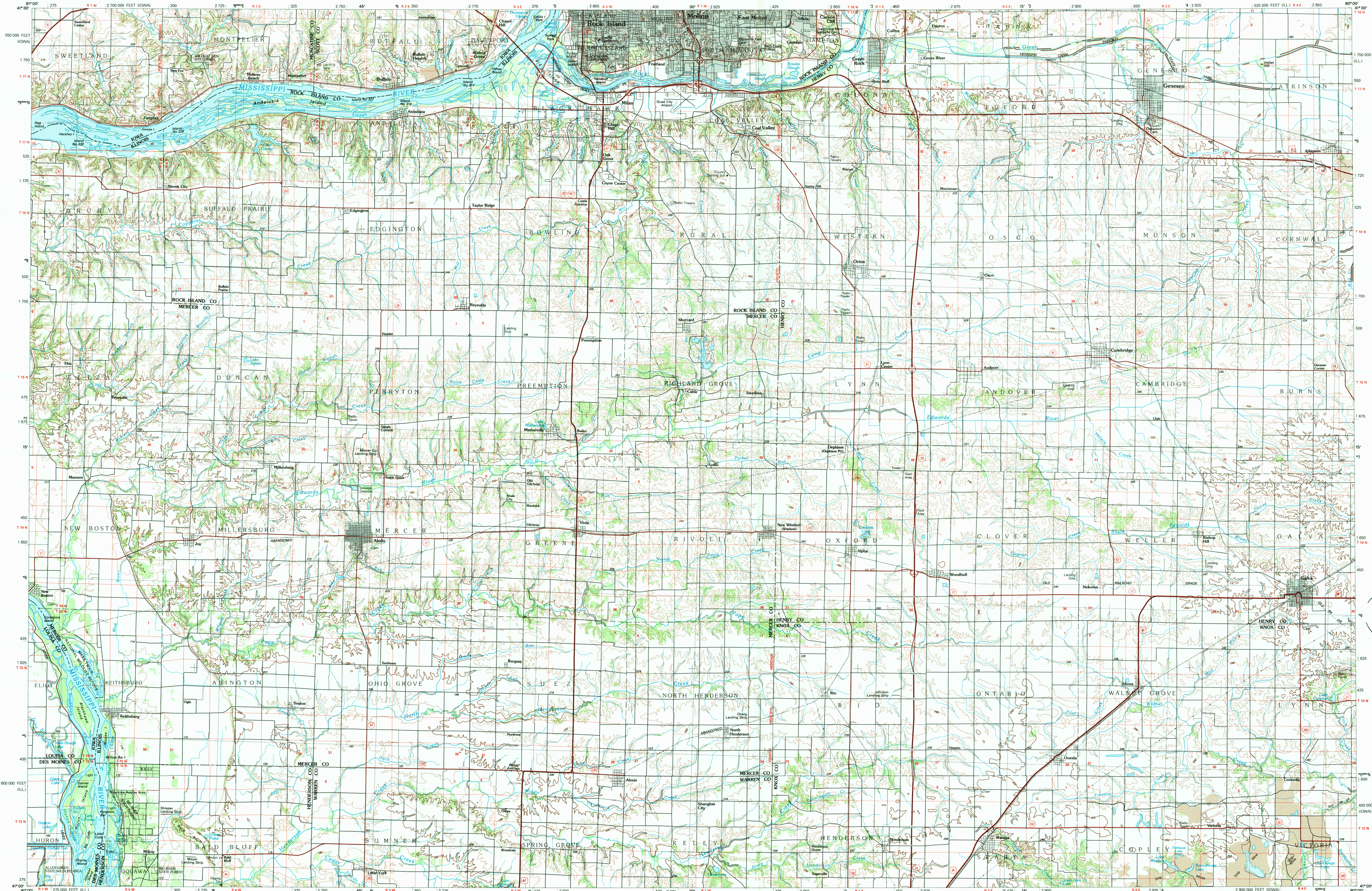
USGS NMD HISTORICAL MAP
JUN 21 1989
REC'D FILE COPY
Topographic Map Symbols

Primary highway, hard surface	
Secondary highway, hard surface	
Light duty road, principal street, hard or improved surface	
Road or street, gravel	
Road marker, Interstate U.S. State	
Railroad: standard gage, narrow gage	
Bridge: overpass, underpass	
Tunnel: road, railroad	
Built up area, locality, elevation	
Airport, landing field, landing strip	
National boundary	
State boundary	
County boundary	
National or State reservation boundary	
Land grant boundary	
U.S. public lands survey: range, township, section	
Range, township, section line, protracted	
Power transmission line: pipeline	
Dam: dam with lock	
Cemetery, building	
Wellhead, water well, spring	
Mine shaft, salt or cave, mine, quarry, gravel pit	
Campground, picnic area, U.S. location monument	
Ruins, cliff dwelling	
Distorted surface: strip mine, lava, sand	
Contours: index, intermediate, supplementary	
Barometric contours: index, intermediate	
Stream, lake, perennial, intermittent	
Rapids, large and small; falls, large and small	
Area to be submerged: marsh, swamp	
Land subject to controlled inundation, woodland	
Salt, mangrove	
Drainage, vineyard	

A pamphlet describing topographic maps is available on request

ALEDO, ILLINOIS-IOWA

30 X 60 MINUTE SERIES (TOPOGRAPHIC)



• INTERIOR—GEOLOGICAL SURVEY, RESTON, VIRGINIA—1989

SCALE 1:100 000

1 CENTIMETER ON THE MAP REPRESENTS 1 KILOMETER ON THE GROUND
CONTOUR INTERVAL 10 METERS

ALEDO, ILLINOIS-IOWA
41090-A1-TM-100