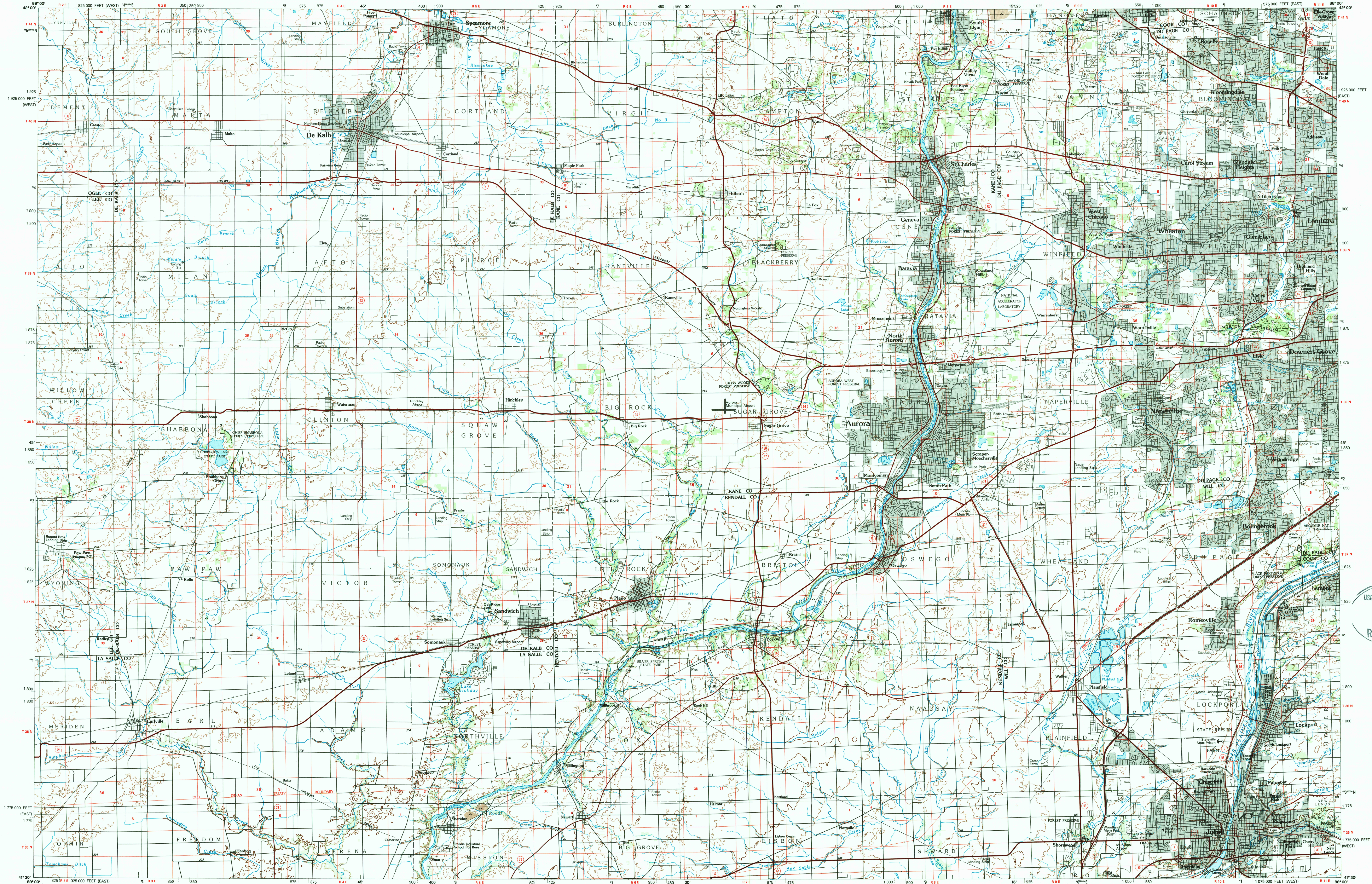


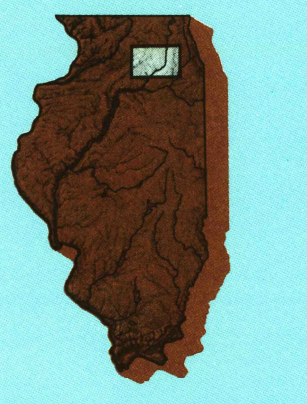
AURORA, ILLINOIS

30 X 60 MINUTE SERIES (TOPOGRAPHIC)



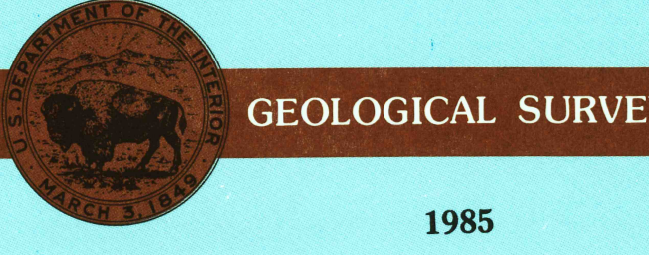
Aurora ILLINOIS

1:100 000-scale metric topographic map



30 X 60 MINUTE QUADRANGLE SHOWING

- Contours and elevations in meters
- Highways, roads and other manmade structures
- Water features
- Woodland areas
- Geographic names



Produced by the United States Geological Survey
 Compiled from USGS 1:24 000-scale topographic maps dated 1953-1980. Planimetry revised from aerial photographs taken 1983 and other source data. Revised information not field checked. Map edited 1985.
 Projection and 10 000-meter grid, zone 16, Universal Transverse Mercator
 25 000-foot grid ticks based on Illinois coordinate system, east and west zones
 1927 North American Datum
 To place on the predicted North American Datum 1983, move the projection lines 2 meters north and 6 meters east
 There may be private inholdings within the boundaries of the National or State reservations shown on this map

CONTOUR INTERVAL 10 METERS
 NATIONAL GEODETIC VERTICAL DATUM OF 1929
 ELEVATIONS SHOWN TO THE NEAREST METER

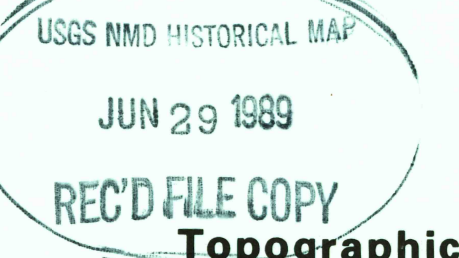
THIS MAP COMPLIES WITH NATIONAL MAP ACCURACY STANDARDS

CONVERSION TABLE		DECLINATION DIAGRAM		ADJOINING MAPS	
Meters	Feet	MAGNETIC DECLINATION (M.D.)		ADJOINING MAPS	
1	3.2808	MAGNETIC DECLINATION (M.D.)		1	2
2	6.5617	MAGNETIC DECLINATION (M.D.)		3	3
3	9.8425	MAGNETIC DECLINATION (M.D.)		4	4
4	13.1234	MAGNETIC DECLINATION (M.D.)		5	5
5	16.4042	MAGNETIC DECLINATION (M.D.)		6	6
6	19.6850	MAGNETIC DECLINATION (M.D.)		7	7
7	22.9659	MAGNETIC DECLINATION (M.D.)		8	8
8	26.2467	MAGNETIC DECLINATION (M.D.)			
9	29.5275	MAGNETIC DECLINATION (M.D.)			
10	32.8084	MAGNETIC DECLINATION (M.D.)			

To convert meters to feet multiply by 3.2808
 To convert feet to meters multiply by 0.3048

UTM grid convergence (CON) and 1983 magnetic declination (M.D.) at center of map
 Diagram is approximate

FOR SALE BY U.S. GEOLOGICAL SURVEY DENVER, COLORADO 80225, OR RESTON, VIRGINIA 22092



Topographic Map Symbols

Primary highway, hard surface	
Secondary highway, hard surface	
Light duty road, principal street, hard or improved surface	
Other road or street, trail	
Route marker: Interstate, U.S., State	
Railroad: standard gage, narrow gage	
Bridge: overpass, underpass	
Tunnel: road, railroad	
Built up area, locality, elevation	
Airport: landing field, landing strip	
National boundary	
State boundary	
County boundary	
National or State reservation boundary	
Land grant boundary	
U.S. public lands survey: range, township, section	
Range, township; section line: protracted	
Power transmission line: pipeline	
Dam, dam with lock	
Cemetery; building	
Windmill; water well; spring	
Mine shaft; salt or cave; mine, quarry; gravel pit	
Campground; picnic area; U.S. location monument	
Disturbed surface: strip mine, lava, sand	
Contours: index, intermediate; supplementary	
Bathymetric contours: index, intermediate	
Stream, lake; perennial; intermittent	
Rapids, large and small; falls, large and small	
Area to be submerged; marsh, swamp	
Land subject to controlled inundation; woodland	
Scrub; mangrove	
Orchard; vineyard	

A pamphlet describing topographic maps is available on request

