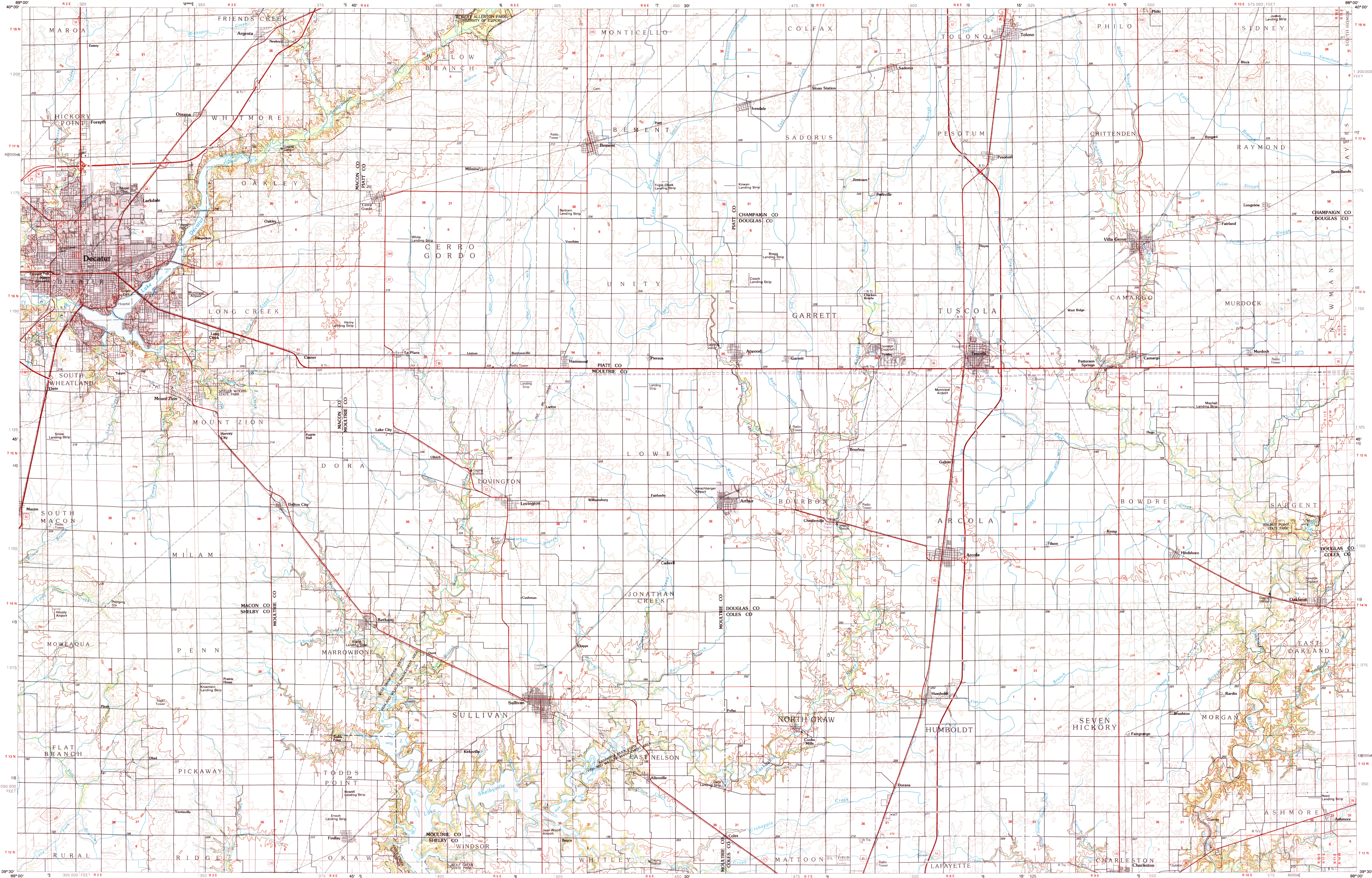


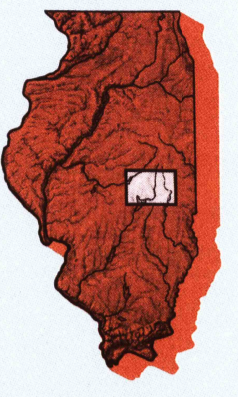
DECATUR, ILLINOIS

30 X 60 MINUTE SERIES (TOPOGRAPHIC)



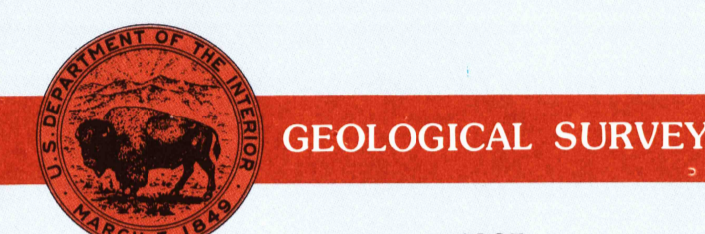
Decatur ILLINOIS

1:100 000-scale metric topographic map



30 X 60 MINUTE QUADRANGLE SHOWING

- Contours and elevations in meters
- Highways, roads and other manmade structures
- Water features
- Woodland areas
- Geographic names



1985 PHOTOINSPECTED 1985

Produced by the United States Geological Survey
 Compiled from USGS 1:24 000-scale topographic maps dated 1967-1983. Planimetry revised from aerial photographs taken 1963-84 and other source data. Revised information not field checked. Map revised 1985.
 Projection and 10 000-meter grid, zone 16, Universal Transverse Mercator
 25 000-foot grid ticks based on Illinois coordinate system, east zone
 1927 North American Datum
 To place on the predicted North American Datum 1983, move the projection lines 1 meter south and 5 meters east
 There may be private inholdings within the boundaries of the National or State reservations shown on this map

Map photorevised using 1983-85 photographs
 No major culture or drainage changes found
 CONTOUR INTERVAL 5 METERS
 NATIONAL GEODESIC VERTICAL DATUM OF 1929
 ELEVATIONS SHOWN TO THE NEAREST METER

THIS MAP COMPLIES WITH NATIONAL MAP ACCURACY STANDARDS

Meters	Feet
1	3.2808
2	6.5617
3	9.8425
4	13.1234
5	16.4042
6	19.6850
7	22.9659
8	26.2467
9	29.5275
10	32.8084

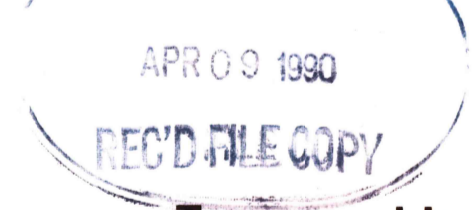
To convert meters to feet multiply by 3.2808
 To convert feet to meters multiply by 0.3048

Declination	North	South
1°	17	18
2°	16	17
3°	15	16
4°	14	15
5°	13	14
6°	12	13
7°	11	12
8°	10	11
9°	9	10
10°	8	9

UTM grid convergence (GTM) for metric declination (MM) at center of map
 Diagram is approximate

Adjoining Maps	1	2	3	
1	Laconia	Champaign	Danville	
2	Springfield	Paris	Litchfield	
3	Edinboro	Terre Haute		

FOR SALE BY U.S. GEOLOGICAL SURVEY DENVER, COLORADO 80225, OR RESTON, VIRGINIA 22092



Topographic Map Symbols

- Primary highway, hard surface
- Secondary highway, hard surface
- Light duty road, gravel street, hard or improved surface
- Other road or street, trail
- Route marker, Interstate, U.S., State
- Railroad: standard gage, narrow gage
- Bridge: overpass, underpass
- Canal: road, railway, elevation
- Bank up area, locality, elevation
- Airport: landing field, landing strip
- National boundary
- State boundary
- County boundary
- National or State reservation boundary
- Land grant boundary
- U.S. public lands survey: range, township, section
- Range, township, section line: protected
- Power transmission line: pipeline
- Dam: dam with lock
- Cemetery, building
- Windmill, water well, spring
- Mine shaft: adit or cave; mine, quarry, gravel pit
- Campground, picnic area, U.S. location monument
- Ruins; cliff dwelling
- Distorted surface: strip mine, low, sand
- Contour: index, intermediate, supplementary
- Bathymetric contours: index, intermediate
- Stream, lake: perennial, intermittent
- Rapids, large and small; falls, large and small
- Area to be submerged; marsh, swamp
- Land subject to controlled inundation; woodland
- Straw; mangrove
- Orchard; vineyard

A pamphlet describing topographic maps is available on request

