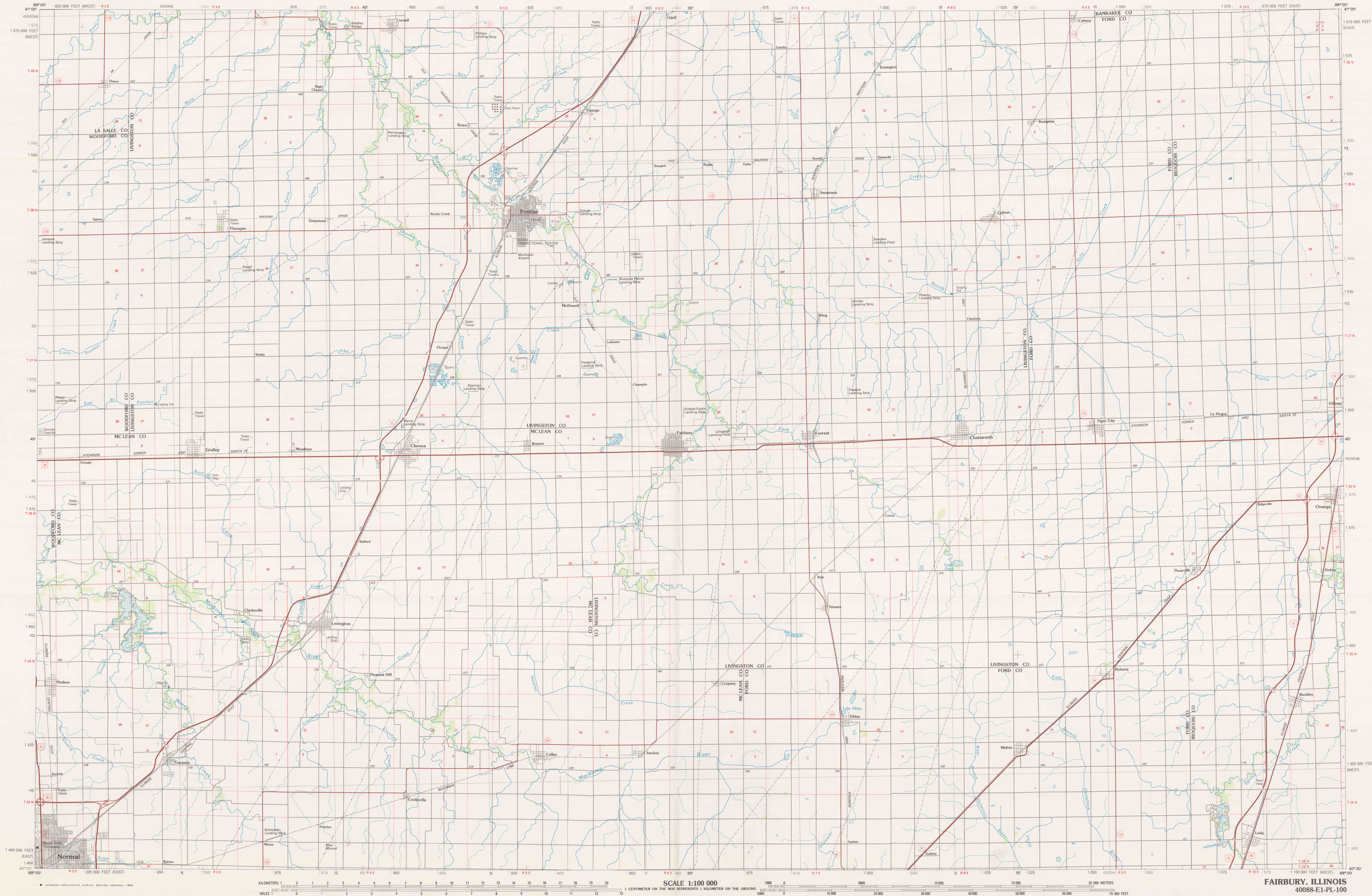
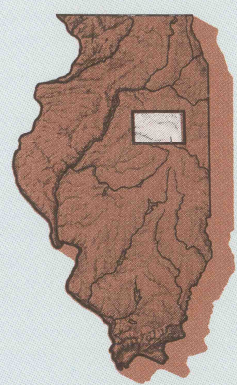
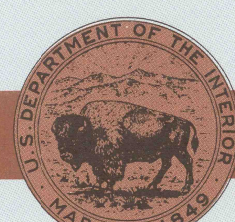


FAIRBURY, ILLINOIS

30 X 60 MINUTE SERIES (PLANIMETRIC)

Fairbury
ILLINOIS1:100 000-scale
planimetric map30 X 60 MINUTE QUADRANGLE
SHOWING

- Elevations in meters
- Highways, roads and other manmade structures
- Water features
- Woodland areas
- Geographic names



GEOLOGICAL SURVEY

1985

Produced by the United States Geological Survey
Compiled from USGS 1:24 000 and 1:50 000-scale topographic maps
dated 1944-1983. Planimetry revised from aerial photographs
taken 1983 and other source data. Revised information not
field checked. Map edited 1985.
Projection and 10 000-meter grid, zone 16,
Universal Transverse Mercator
25 000-foot grid ticks based on Illinois coordinate
system, east and west zones
1927 North American Datum
To place on the predicted North American Datum 1983, move
the projection lines 1 meter north and 5 meters east
There may be private inholdings within the boundaries of
the National or State reservations shown on this map

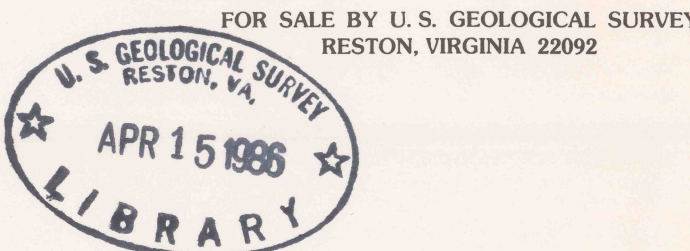
NATIONAL GEODETIC VERTICAL DATUM OF 1929
ELEVATIONS SHOWN TO THE NEAREST METER

THIS MAP COMPLIES WITH NATIONAL MAP ACCURACY STANDARDS

CONVERSION TABLE		DECLINATION DIAGRAM	ADJOINING MAPS
Meters	Feet		
1	3.2808		1 Kankakee
2	6.5617		2 Ottawa
3	9.8425		3 Kankakee
4	13.1234		4 Peoria
5	16.4042		5 Watseka
6	19.6850		6 Lincoln
7	22.9658		7 Champaign
8	26.2467		8 Danville
9	29.5275		
10	32.8083		

To convert meters to feet multiply by 3.2808
To convert feet to meters multiply by 0.3048

UTM grid convergence (GN) and 1983 magnetic declination (MN) at center of map
Diagram is approximate



Topographic Map Symbols

Primary highway, hard surface	
Secondary highway, hard surface	
Light duty road, principal street, hard or improved surface	
Other road or street, trail	
Railroad: interstate, U.S. State	
Railroad: standard gauge; narrow gauge	
Bridge: overpass; underpass	
Tunnel: road; railroad	
Built up area; locality, elevation	
Airport; landing field; landing strip	
National boundary	
State boundary	
County boundary	
National or State reservation boundary	
Land grant boundary	
U.S. public lands survey: range, township, section	
Range, township, section line, projected	
Power transmission line; pipeline	
Dam; dam with lock	
Cemetery; building	
Windmill; water well; spring	
Mine shaft; adit or cave; mine, quarry; gravel pit	
Campground; picnic area; U.S. location monument	
Ruin; cliff dwelling	
Distorted surface: strip mine, lava, sand	
Contours: index; intermediate; supplementary	
Bathymetric contours: index; intermediate	
Stream, lake; perennial, intermittent	
Rapids, large and small; falls, large and small	
Area to be submerged; marsh, swamp	
Land subject to controlled inundation; woodland	
Scrub; mangrove	
Orchard; vineyard	

A pamphlet describing topographic maps is available on request

FAIRBURY, ILLINOIS

40088-E1-PL-100

1985

UNITED STATES, TOPO, 1:100,000
Sheet FAIRBURY, IL, 1985
copy 1