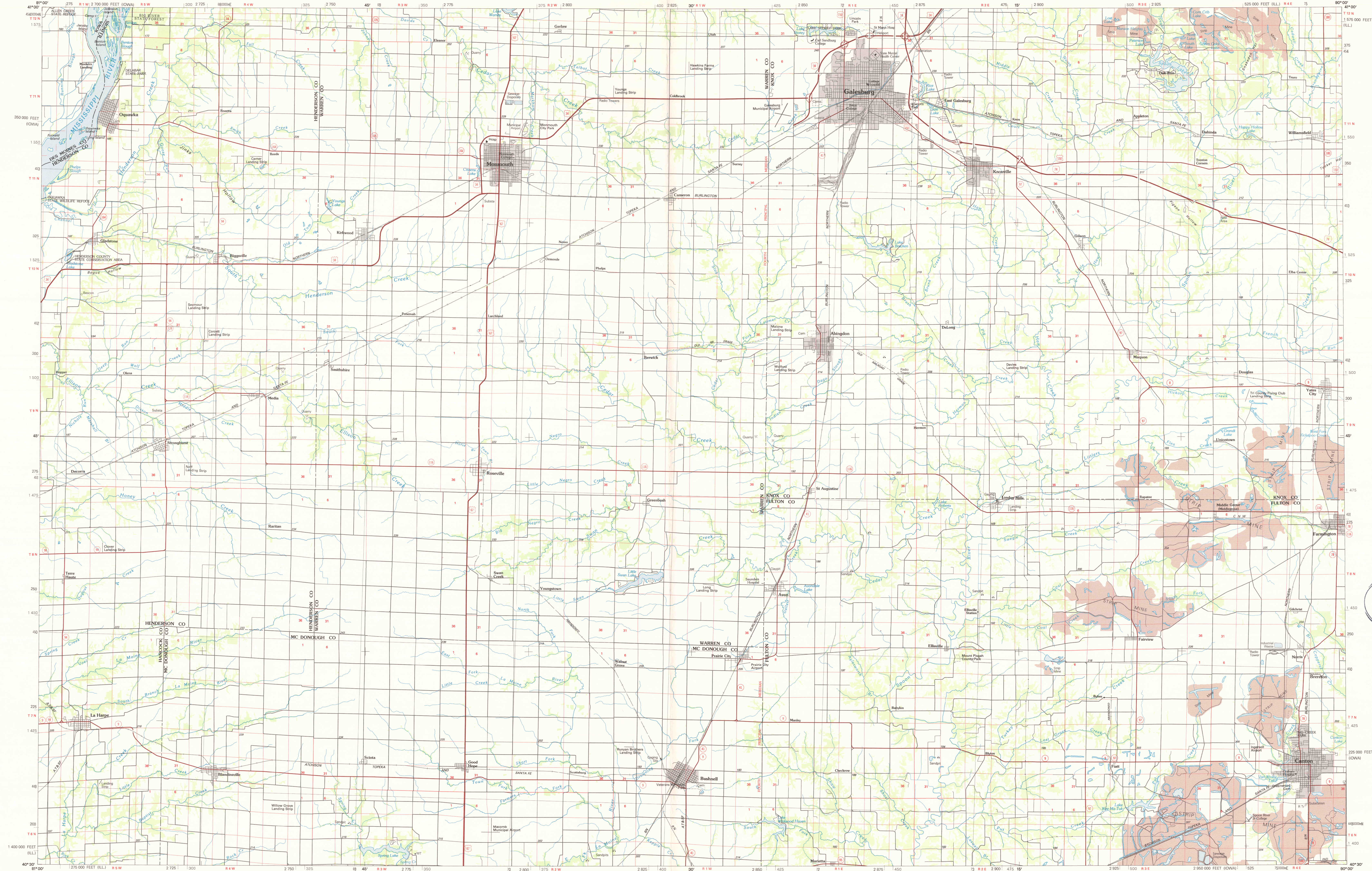


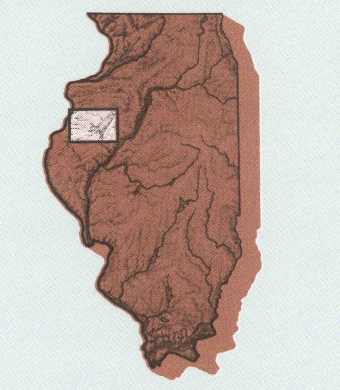
GALESBURG, ILLINOIS-IOWA

30 X 60 MINUTE SERIES (PLANIMETRIC)



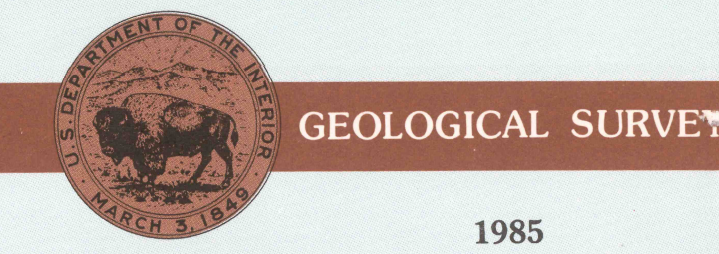
Galesburg ILLINOIS-IOWA

1:100 000-scale planimetric map



30 X 60 MINUTE QUADRANGLE SHOWING

- Elevations in meters
- Highways, roads and other manmade structures
- Water features
- Woodland areas
- Geographic names



Produced by the United States Geological Survey
 Compiled from USGS 1:24 000-scale topographic maps dated 1974-1982. Planimetry revised from aerial photographs taken 1978-1984 and other source data. Revised information not field checked. Map edited 1985.
 Projection and 10 000-meter grid, zone 15. Universal Transverse Mercator
 25 000-foot grid ticks based on Illinois coordinate system, west zone and Iowa coordinate system, south zone 1927 North American Datum
 To place on the predicted North American Datum 1983, move the projection lines 1 meter north and 10 meters east
 There may be private inholdings within the boundaries of the National or State reservations shown on this map

NATIONAL GEODETIC VERTICAL DATUM OF 1929
 ELEVATIONS SHOWN TO THE NEAREST METER

THIS MAP COMPLIES WITH NATIONAL MAP ACCURACY STANDARDS

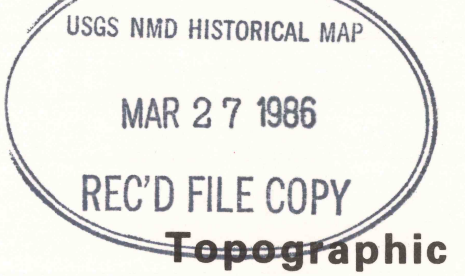
CONVERSION TABLE		DECLINATION DIAGRAM		ADJOINING MAPS		
Meters	Feet	DN	MN	1	2	3
1	3.2808			4	7	8
2	6.5616			1	2	3
3	9.8424			4	7	8
4	13.1232			1	2	3
5	16.4040			4	7	8
6	19.6848			1	2	3
7	22.9656			4	7	8
8	26.2464			1	2	3
9	29.5272			4	7	8
10	32.8080			1	2	3

To convert meters to feet multiply by 3.2808
 To convert feet to meters multiply by 0.3048

ITM grid convergence (IGM and 1983 magnetic declination) at center of map Diagram is approximate

1 Muscatine
 2 Alledo
 3 Keosauqua
 4 Burlington
 5 Potosi
 6 Keokuk
 7 Macomb
 8 Lincoln

FOR SALE BY U. S. GEOLOGICAL SURVEY
 DISTRICT OFFICE, COLORADO 80225, OR RESTON, VIRGINIA 22092



Topographic Map Symbols

- Primary highway, hard surface
- Secondary highway, seal surface
- Light duty road, gravel/surfaced, hard or improved surface
- Other road or street, trail
- Route marker: Interstate, U.S., State
- Railroad: standard gauge, narrow gauge
- Bridge: overpass, underpass
- Tunnel: road, railroad
- Built up area, locality, elevation
- Airport: landing field, landing strip
- National boundary
- State boundary
- County boundary
- National or State reservation boundary
- Land grant boundary
- U.S. public lands survey: range, township, section
- Range, township, section line: prerestricted
- Power transmission line, pipeline
- Dam; dam with lock
- Cemetery, building
- Windmill, water well, spring
- Mine shaft, salt or cave, mine, quarry, gravel pit
- Campground, picnic area, U.S. location monument
- Ruins, cliff dwelling
- Distorted surface: strip mine, lava, sand
- Contours: index, intermediate, supplementary
- Bathymetric contours: index, intermediate
- Stream, lake, perennial, intermittent
- Rapids, large and small; falls, large and small
- Area to be submerged; marsh, swamp
- Land subject to controlled inundation; woodland
- Straw, mangrove
- Orchard, vineyard

A pamphlet describing topographic maps is available on request