

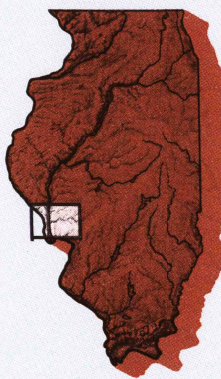
JERSEYVILLE, ILLINOIS—MISSOURI

30 X 60 MINUTE SERIES (PLANIMETRIC)

Jerseyville

ILLINOIS—MISSOURI

1:100 000-scale
planimetric map



30 X 60 MINUTE QUADRANGLE SHOWING

- Elevations in meters
- Highways, roads and other manmade structures
- Water features
- Woodland areas
- Geographic names



GEOLOGICAL SURVEY

1985

Produced by the United States Geological Survey
Compiled from USGS 1:24 000-scale topographic maps dated 1954-1984. ~~Plan 1984~~ revised from aerial photographs taken 1982 and other source data. Revised information not field checked. Map edited 1985

Projection and 10 000-meter grid, zone 15,
Universal Transverse Mercator
25 000-foot grid ticks based on Illinois coordinate system,
west zone and Missouri coordinate system, east
1927 North American Datum

To place on the predicted North American Datum 1983, move
the projection lines 1 meter south and 9 meters east

There may be private inholdings within the boundaries of
the National or State reservations shown on this map

NATIONAL GEODETIC VERTICAL DATUM OF 1929
ELEVATIONS SHOWN TO THE NEAREST METER

THIS MAP COMPLIES WITH NATIONAL MAP ACCURACY STANDARD

| Meters | Feet |
|--------|---------|
| 1 | 3.2808 |
| 2 | 6.5617 |
| 3 | 9.8425 |
| 4 | 13.1234 |
| 5 | 16.4042 |
| 6 | 19.6850 |
| 7 | 22.9659 |
| 8 | 26.2467 |
| 9 | 29.5276 |
| 10 | 32.8084 |

UTM grid convergence
(GHI and 1986 magnetic
declination) (MN)
at center of map
Diagram is approximate

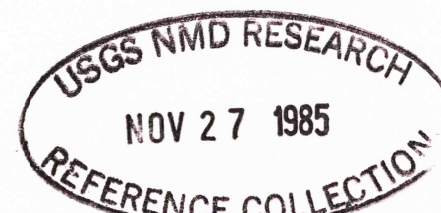
| 1 | 2 | 3 |
|---|---|---|
| 4 | 5 | |
| 7 | 8 | |

To convert meters to feet multiply by 3.2808

To convert feet to meters multiply by 0.3048

1 Quincy
2 Mercedosa
3 Springfield
4 Mexico
5 Litchfield
6 Fulton
7 Saint Louis
8 Carlyle Lake

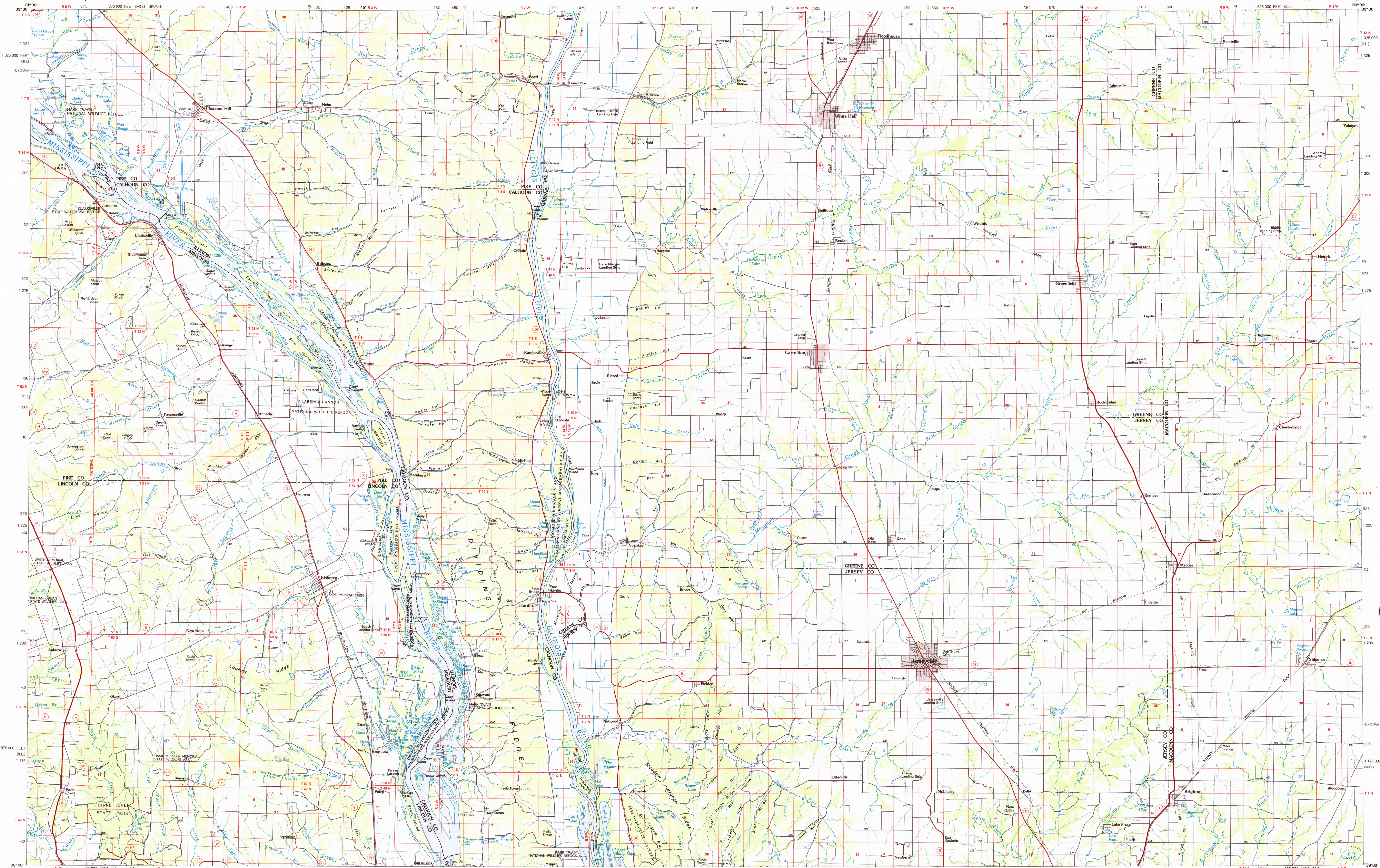
FOR SALE BY U. S. GEOLOGICAL SURVEY
DENVER, COLORADO 80225, OR RESTON, VIRGINIA 22092



Topographic Map Symbols

- | | |
|---|--|
| Primary highway, hard surface | |
| Secondary highway, hard surface | |
| Light duty road, principal street, hard or improved surface | |
| Other road or avenue | |
| Road marker: Interstate, U.S. State | |
| Railroad: standard gauge, narrow gauge | |
| Bridge, overpass, underpass | |
| Tunnel: road, railroad | |
| Built up area, locality: elevation | |
| Airport, landing field; landing strip | |
| National boundary | |
| State boundary | |
| County boundary | |
| National or State reservation boundary | |
| Land grant boundary | |
| U.S. public lands: range, township, section | |
| Range, township, section line: projected | |
| Power transmission line: pipeline | |
| Dam; dam with lock | |
| Canal; building | |
| Windmill; water well; spring | |
| Mine shaft; salt or cave; mine, quarry; gravel pit | |
| Cemetary; picnic area, U.S. location monument | |
| Ruins; cliff dwelling | |
| Distorted surface: strip mine, lake, sand | |
| Contours: index, intermediate; supplementary | |
| Hydrographic contours: index, intermediate | |
| Bathym. mesh; perennial; intermittent | |
| Rapids, range and small, falls, barge and small | |
| Land to be colonized; marsh, swamp | |
| Area subject to controlled inundation, woodland | |
| Scrub; mangrove | |
| Orchard, vineyard | |

A pamphlet describing topographic maps is available on request.



● INTERIOR—GEOLOGICAL SURVEY, RESTON, VIRGINIA—1965

SCALE 1:100 000

JERSEYVILLE, ILLINOIS—MISSOURI
39090-A1-PL-100

1985