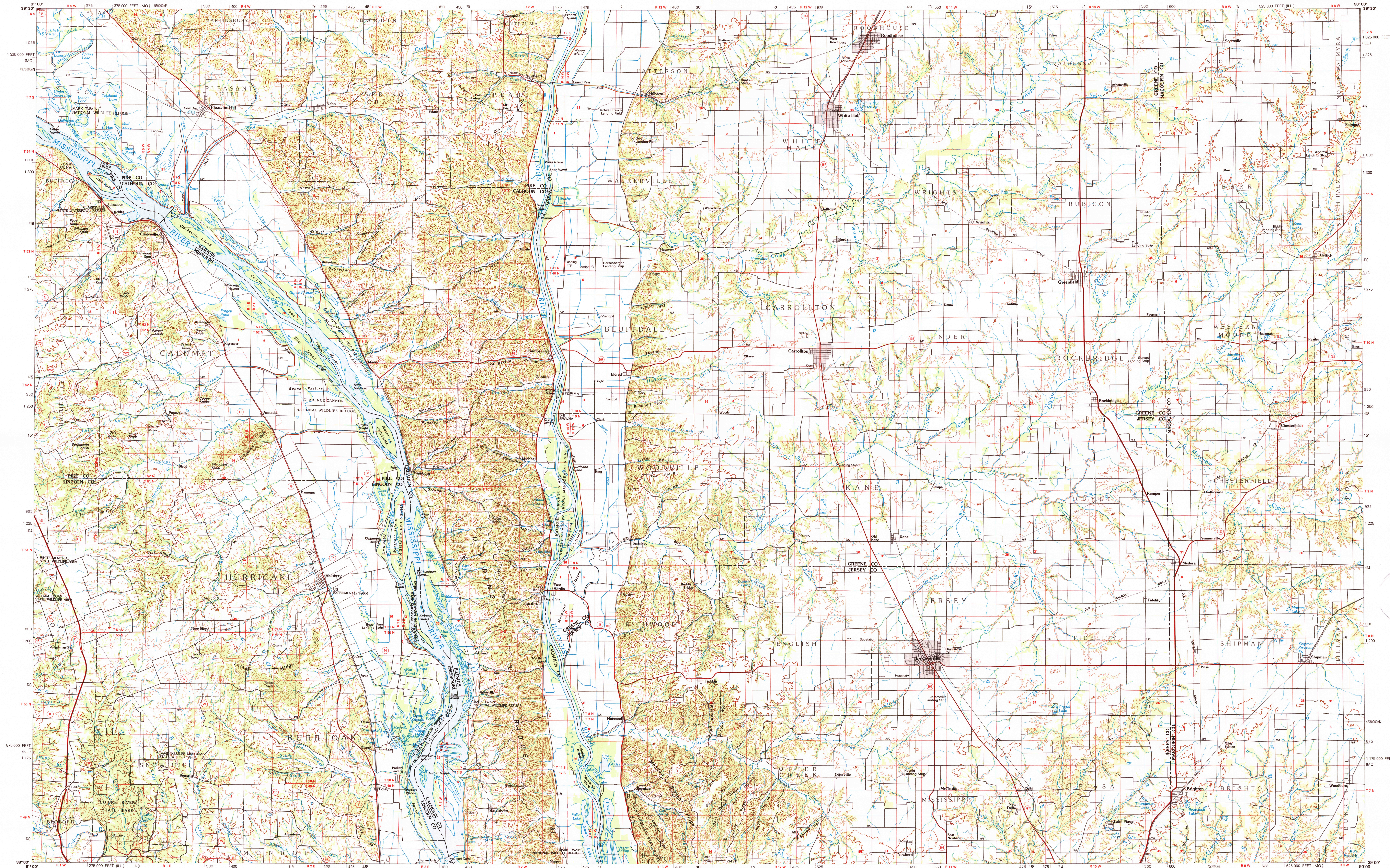


JERSEYVILLE, ILLINOIS—MISSOURI

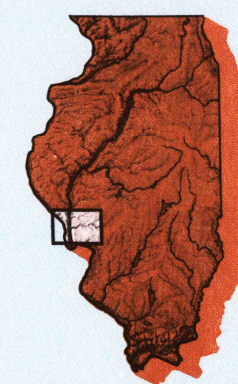
30 X 60 MINUTE SERIES (TOPOGRAPHIC)



Jerseyville

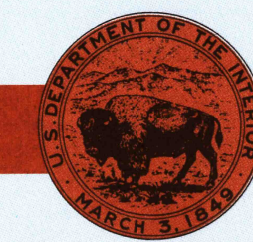
ILLINOIS—MISSOURI

1:100 000-scale metric
topographic map



30 X 60 MINUTE QUADRANGLE
SHOWING

- Contours and elevations in meters
- Highways, roads and other manmade structures
- Water features
- Woodland areas
- Geographic names



GEOLOGICAL SURVEY

1985
PHOTOINSPECTED 1986

Produced by the United States Geological Survey
Compiled from USGS 1:24 000-scale topographic maps dated 1975-1984. Planimetry revised from aerial photographs taken 1982 and other source data. Revised information not field checked. Map edited 1985.
Projection and 10 000-meter grid, zone 15.
Universal Transverse Mercator
25 000-foot grid ticks based on Illinois coordinate system, west zone and Missouri coordinate system, east zone
1927 North American Datum
To place on the predicted North American Datum 1983, move the projection lines 1 meter south and 9 meters east
There may be private inholdings within the boundaries of the National or State reservations shown on this map.
Map photoinspected using 1983-86 photographs
No major culture or drainage changes found

CONTOUR INTERVAL 20 METERS
NATIONAL GEODETIc VERTICAL DATUM OF 1929
ELEVATIONS SHOWN TO THE NEAREST METER

THIS MAP COMPLIES WITH NATIONAL MAP ACCURACY STANDARDS

CONVERSION TABLE		DECLINATION DIAGRAM		ADJOINING MAPS				
Meters	Faet			1	2	3	4	5
1	3.2808			1	2	3	4	5
2	6.5617			6	7	8	9	10
3	9.8425			11	12	13	14	15
4	13.1234			16	17	18	19	20
5	16.4043			21	22	23	24	25
6	19.6852			26	27	28	29	30
7	22.9660			31	32	33	34	35
8	26.2469			36	37	38	39	40
9	29.5278			41	42	43	44	45
10	32.8084			46	47	48	49	50

To convert meters to feet multiply by 3.2808
To convert feet to meters multiply by 0.3048
UTM grid convergence (GM) and 1983 magnetic declination (MM) at center of map
Diagram is approximate

FOR SALE BY U.S. GEOLOGICAL SURVEY
DENVER, COLORADO 80225, OR RESTON, VIRGINIA 22092

Topographic Map Symbols

Primary highway, hard surface.....	
Secondary highway, hard surface.....	
Light duty road, principal street, hard or improved surface.....	
Other road or street, trail.....	
Route marker: interstate, U.S. State.....	
Railroad: standard gage; narrow gage.....	
Bridge: overpass; underpass.....	
Tunnel: road; railroad.....	
Built up area; locality; elevation.....	
Airport; landing field; landing strip.....	
National boundary.....	
State boundary.....	
County boundary.....	
National or State reservation boundary.....	
Land grant boundary.....	
U.S. public lands survey: range, township; section.....	
Range, township; section line: protracted.....	
Power transmission line; pipeline.....	
Dam; dam with lock.....	
Cemetery; building.....	
Windmill; water well; spring.....	
Mine shaft; adit or cave; mine, quarry; gravel pit.....	
Campground; picnic area; U.S. location monument.....	
Ruin; cliff dwelling.....	
Deformed surface: strip mine, lava, sand.....	
Contours: index; intermediate; supplementary.....	
Bathymetric contours: index; intermediate.....	
Stream, lake; perennial; intermittent.....	
Rapids, large and small; falls, large and small.....	
Area to be submerged; marsh, water.....	
Land subject to controlled inundation; woodland.....	
Scrub; mangrove.....	
Orchard; vineyard.....	

A pamphlet describing topographic maps is available on request

SCALE 1:100 000

1 CENTIMETER ON THE MAP REPRESENTS 1 KILOMETER ON THE GROUND

CONTOUR INTERVAL 20 METERS

JERSEYVILLE, ILLINOIS—MISSOURI

39090-A1-TM-100

1985

PHOTOINSPECTED 1986