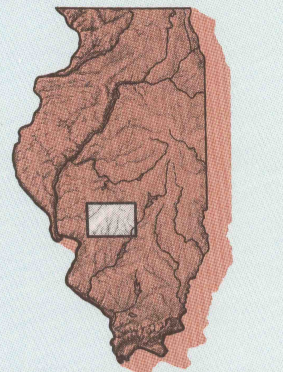


LITCHFIELD, ILLINOIS

30 X 60 MINUTE SERIES (TOPOGRAPHIC)

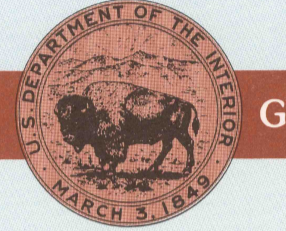
Litchfield ILLINOIS

1:100 000-scale metric topographic map



30 X 60 MINUTE QUADRANGLE SHOWING

- Contours and elevations in meters
- Highways, roads and other manmade structures
- Water features
- Woodland areas
- Geographic names



GEOLOGICAL SURVEY

1982

Produced by the United States Geological Survey  
 Compiled from USGS 1:24 000-scale topographic maps dated 1974-1982. Planimetry revised from aerial photographs taken 1976 and 1978 and other source data. Revised information not field checked. Map edited 1982.  
 Projection and 10 000-meter grid, zone 16, Universal Transverse Mercator  
 25 000-foot grid ticks based on Illinois coordinate system, west and east zones  
 1927 North American Datum  
 To place on the predicted North American Datum 1983 move the projection lines 1 meter south and 7 meters east  
 There may be private inholdings within the boundaries of the National or State reservations shown on this map

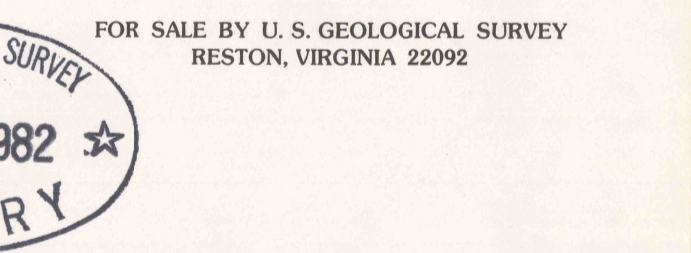
CONTOUR INTERVAL 10 METERS  
 SUPPLEMENTARY CONTOUR INTERVAL 5 METERS  
 NATIONAL GEODETIC VERTICAL DATUM OF 1929  
 ELEVATIONS SHOWN TO THE NEAREST METER

THIS MAP COMPLIES WITH NATIONAL MAP ACCURACY STANDARDS

CONVERSION TABLE		DECLINATION DIAGRAM		ADJOINING MAPS		
Meters	Feet	Magnetic Declination		1	2	3
1	3.2808	38° 15' N		4	5	
2	6.5617	36° 15' N		6	7	8
3	9.8425	34° 15' N				
4	13.1234	32° 15' N				
5	16.4043	30° 15' N				
6	19.6852	28° 15' N				
7	22.9661	26° 15' N				
8	26.2470	24° 15' N				
9	29.5279	22° 15' N				
10	32.8088	20° 15' N				

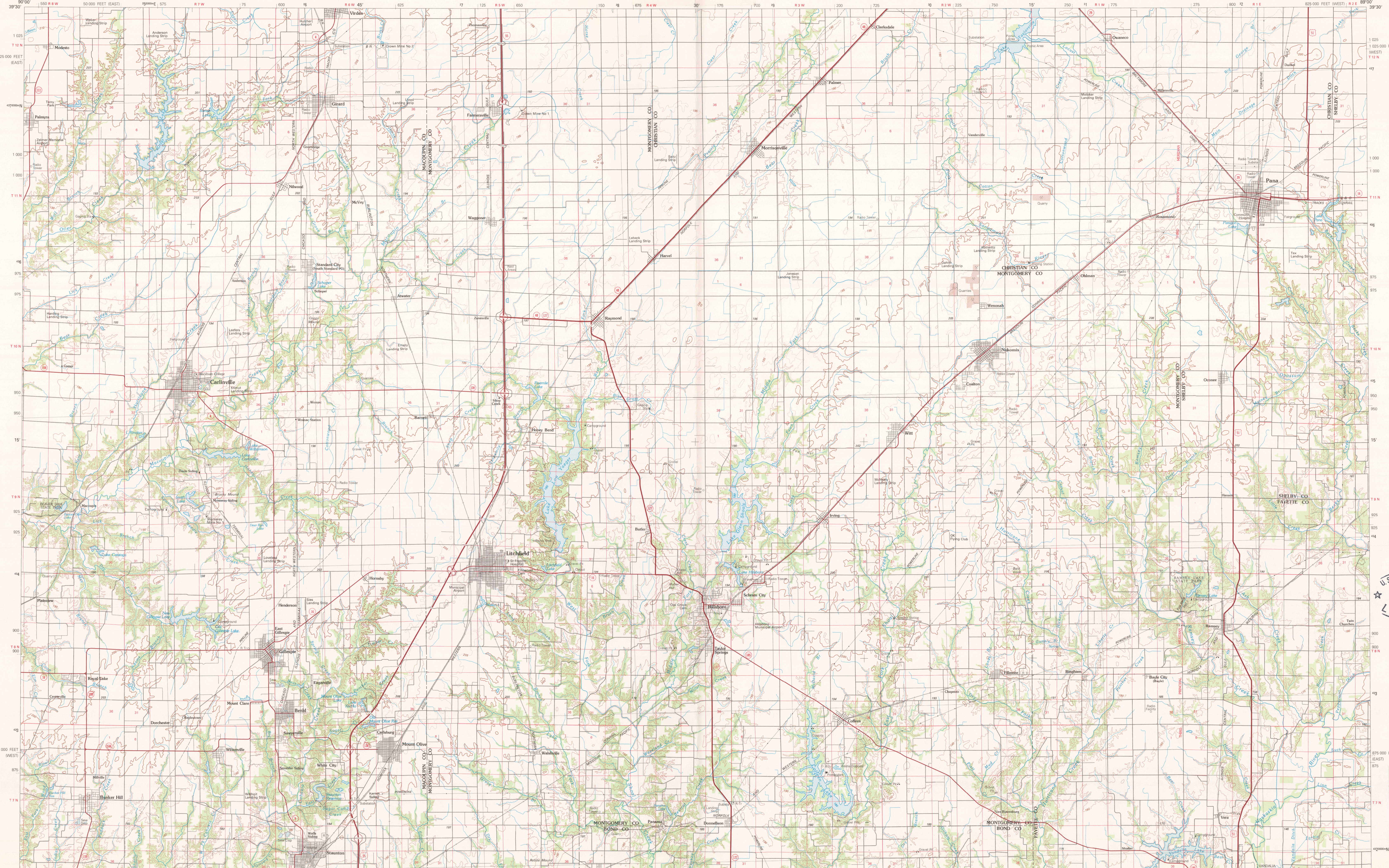
To convert meters to feet multiply by 3.2808  
 To convert feet to meters multiply by 0.3048

UTM grid convergence (GM) and 1982 magnetic declination (MN) at center of map  
 Diagram is approximate



Topographic Map Symbols

- Primary highway, hard surface
- Secondary highway, hard surface
- Light duty road, principal street, hard or improved surface
- Other road or street, trail
- Route marker: Interstate, U.S., State
- Railroad: standard gage, narrow gage
- Bridge, overpass, underpass
- Tunnel road, railroad
- Built up area, locality, elevation
- Airport: landing field, landing strip
- National boundary
- State boundary
- County boundary
- National or State reservation boundary
- Land grant boundary
- U.S. public lands survey: range, township, section
- Range, township, section line: protracted
- Power transmission line, pipeline
- Dam; dam with lock
- Cemetery; building
- Windmill; water well; spring
- Mine shaft: adit or cave; mine, quarry; gravel pit
- Campground; picnic area; U.S. location monument
- Ruins; old dwelling
- Disturbed surface: strip mine, levee, sand
- Contours: index, intermediate, supplementary
- Bathymetric contours: index, intermediate
- Stream, lake: perennial, intermittent
- Rapids, weir and weir, falls, large and small
- Area to be submerged; marsh, swamp
- Land subject to controlled inundation
- Scrub; mangrove
- Orchard; vineyard



A pamphlet describing topographic maps is available on request  
 United States Topo. 1:100,000  
 Litchfield, 1982  
 copy 1