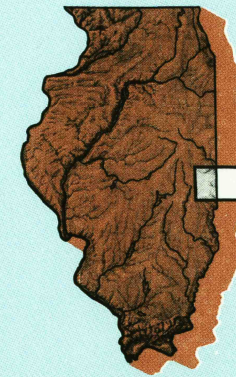


Paris

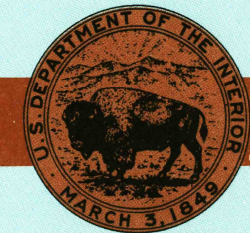
ILLINOIS-INDIANA

1:100 000-scale metric
topographic map



30 X 60 MINUTE QUADRANGLE
SHOWING

- Contours and elevations in meters
- Highways, roads and other manmade structures
- Water features
- Woodland areas
- Geographic names



GEOLOGICAL SURVEY

1986

Produced by the United States Geological Survey

Compiled from USGS 1:24 000-scale topographic maps dated 1960-1982. Planimetry revised from aerial photographs taken 1984 and other source data. Revised information not field checked. Map edited 1986.

Projection and 10 000-meter grid, zone 16.

Universal Transverse Mercator

25 000-foot grid based on Indiana coordinate system, west zone and Illinois coordinate system, east zone

1927 North American Datum

To place on the predicted North American Datum 1983, move the projection lines 1 meter south and 2 meters east

There may be private inholdings within the boundaries of the National or State reservations shown on this map

CONTOUR INTERVAL 10 METERS
SUPPLEMENTARY CONTOUR INTERVAL 5 METERS
NATIONAL GEODETIC VERTICAL DATUM OF 1929
ELEVATIONS SHOWN TO THE NEAREST METER

THIS MAP COMPLIES WITH NATIONAL MAP ACCURACY STANDARDS

CONVERSION TABLE		DECLINATION DIAGRAM		ADJOINING MAPS			
Meters	Feet			1	2	3	
1	3.2808		0.19° 6 MILS	1	2	3	
2	6.5617			4	5	6	
3	9.8425			7	8		
4	13.1234						
5	16.4042						
6	19.6850						
7	22.9658						
8	26.2467						
9	29.5275						
10	32.8084						
To convert meters to feet multiply by 3.2808		UTM grid convergence (GN) and 1983 magnetic declination (MN) at center of map Diagram is approximate		1	2	3	
To convert feet to meters multiply by 0.3048				4	5	6	
				7	8		

1 Champaign

2 Danville

3 Lafayette

4 Decatur

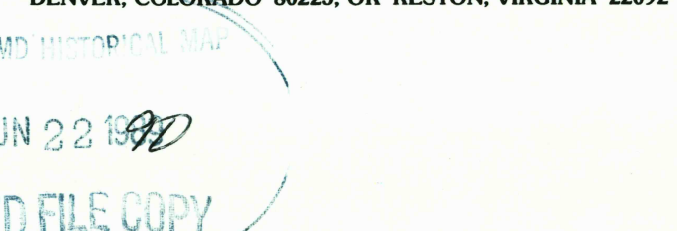
5 Indianapolis

6 Elkhart

7 Terre Haute

8 Bloomington

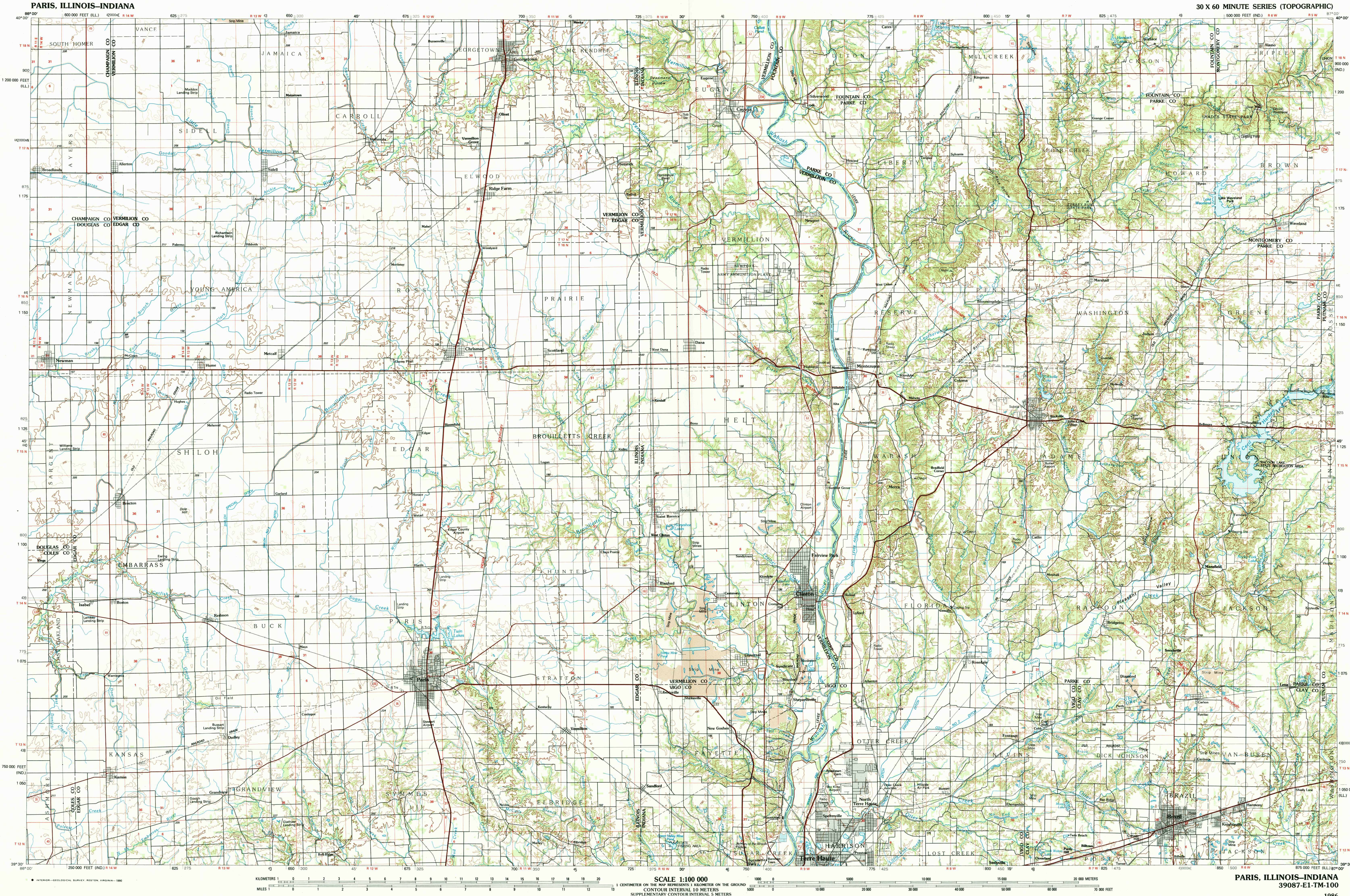
FOR SALE BY U.S. GEOLOGICAL SURVEY
DENVER, COLORADO 80225, OR RESTON, VIRGINIA 22092



Topographic Map Symbols

Primary highway, hard surface	
Secondary highway, hard surface	
Light duty road, principal street, hard or improved surface	
Other road or street, road	
Railroad, standard gauge, narrow gauge	
Bridge, overpass, underpass	
Tunnel, road, railroad	
Built up area, locality, elevation	
Airport, landing field, landing strip	
National boundary	
State boundary	
County boundary	
National or State reservation boundary	
Land grant boundary	
U.S. public lands survey, range, township, section	
Range, township, section line, projected	
Power transmission line, pipeline	
Dam, dam with lock	
Cemetery, building	
Windmill, water well, spring	
Mine shaft, well or cave, mine, quarry, gravel pit	
Campground, picnic area, U.S. location monument	
Ruins, cliff dwelling	
Distorted surface: strip mine, lava, sand	
Contours: index, intermediate, supplementary	
Barometric contours, index, intermediate	
Stream, lake, perennial, intermittent	
Rapids, large and small; falls, large and small	
Area to be submerged, marsh, swamp	
Land subject to controlled inundation; woodland	
Scrub, mangrove	
Orchard, vineyard	

A pamphlet describing topographic maps is available on request



SCALE 1:100 000
1 CENTIMETER ON THE MAP REPRESENTS 1 KILOMETER ON THE GROUND
CONTOUR INTERVAL 10 METERS
SUPPLEMENTARY CONTOUR INTERVAL 5 METERS

PARIS, ILLINOIS-INDIANA
39087-E1-TM-100
1986