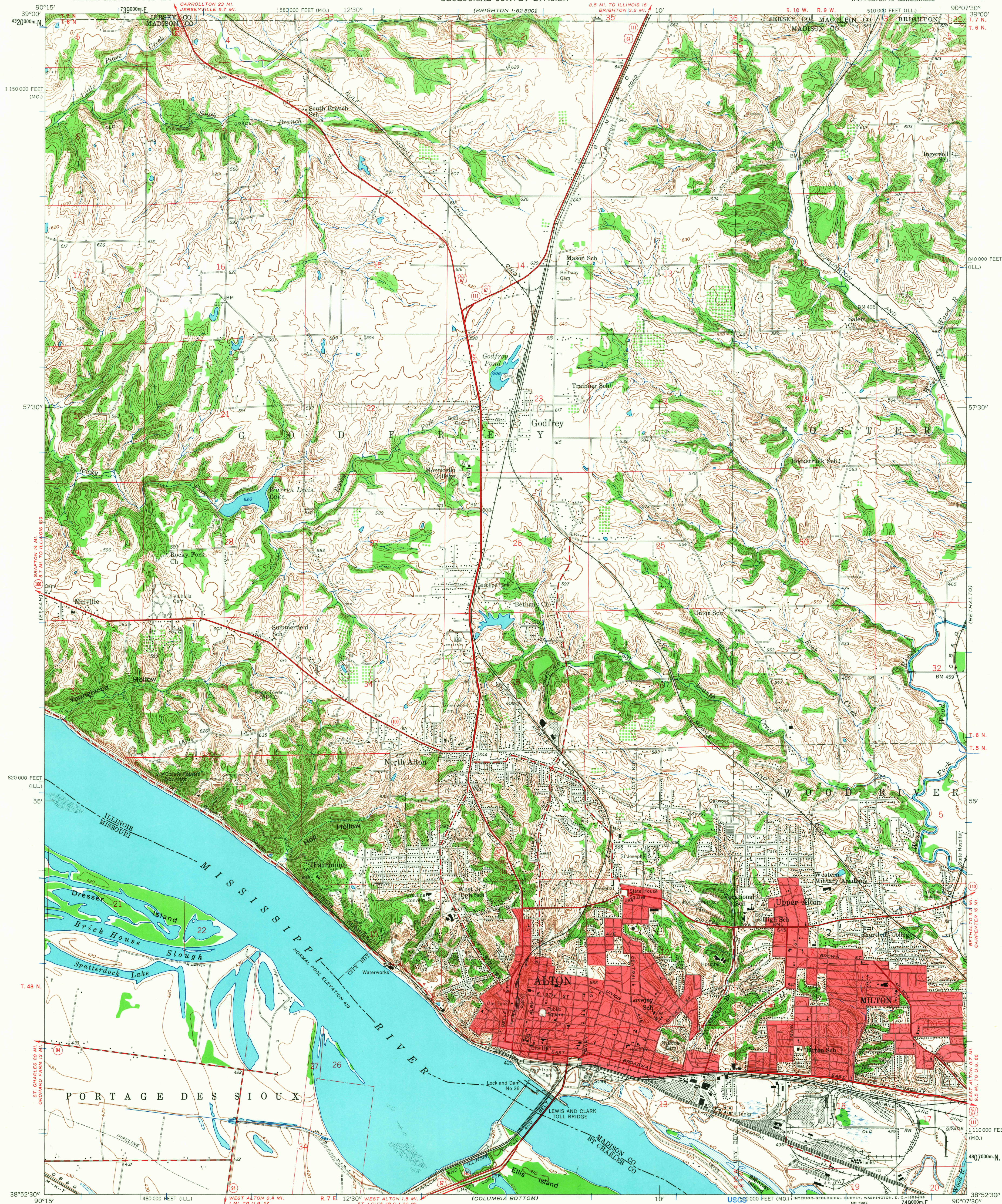


UNITED STATES
DEPARTMENT OF THE INTERIOR
GEOLOGICAL SURVEY

STATE OF ILLINOIS
DEPARTMENT OF REGISTRATION AND EDUCATION
GEOLOGICAL SURVEY DIVISION

ALTON QUADRANGLE
ILLINOIS-MISSOURI
7.5 MINUTE SERIES (TOPOGRAPHIC)
NW 1/4 ALTON 15' QUADRANGLE



Mapped by the Geological Survey
Revised by the Army Map Service
Published for civil use by the Geological Survey
Control by USGS, USC&GS, and Mississippi River Commission
Topography from aerial photographs by multiplex methods and
planimetric surveys by the Geological Survey 1947-1948
Planimetric detail revised from aerial photographs taken 1952
Field check 1954
Polyconic projection. 1927 North American datum
10,000-foot grids based on Illinois coordinate system, west zone
and Missouri coordinate system, east zone
1000-meter Universal Transverse Mercator grid ticks,
zone 15, shown in blue
Red tint indicates areas in which only landmark buildings are shown

SCALE 1:24 000
CONTOUR INTERVAL 10 FEET
DATUM IS MEAN SEA LEVEL
THIS MAP COMPLIES WITH NATIONAL MAP ACCURACY STANDARDS
FOR SALE BY U. S. GEOLOGICAL SURVEY, DENVER 25, COLORADO OR WASHINGTON 25, D. C.
STATE GEOLOGICAL SURVEY, URBANA, ILLINOIS
AND BY THE MISSOURI GEOLOGICAL SURVEY, ROLLA, MISSOURI
A FOLDER DESCRIBING TOPOGRAPHIC MAPS AND SYMBOLS IS AVAILABLE ON REQUEST

USGS
Historical File
Topographic Division

ROAD CLASSIFICATION
Heavy-duty ———— Light-duty ————
Medium-duty ———— Unimproved dirt ————
U. S. Route ———— State Route ————



U.S.G.S.
FILE COPY
TOPOGRAPHIC DIVISION

ALTON, ILL. - MO.
NW 1/4 ALTON 15' QUADRANGLE
N 3852.5 - W 9007.5 / 7.5
1954

1375
MAR 20 1968
7/0