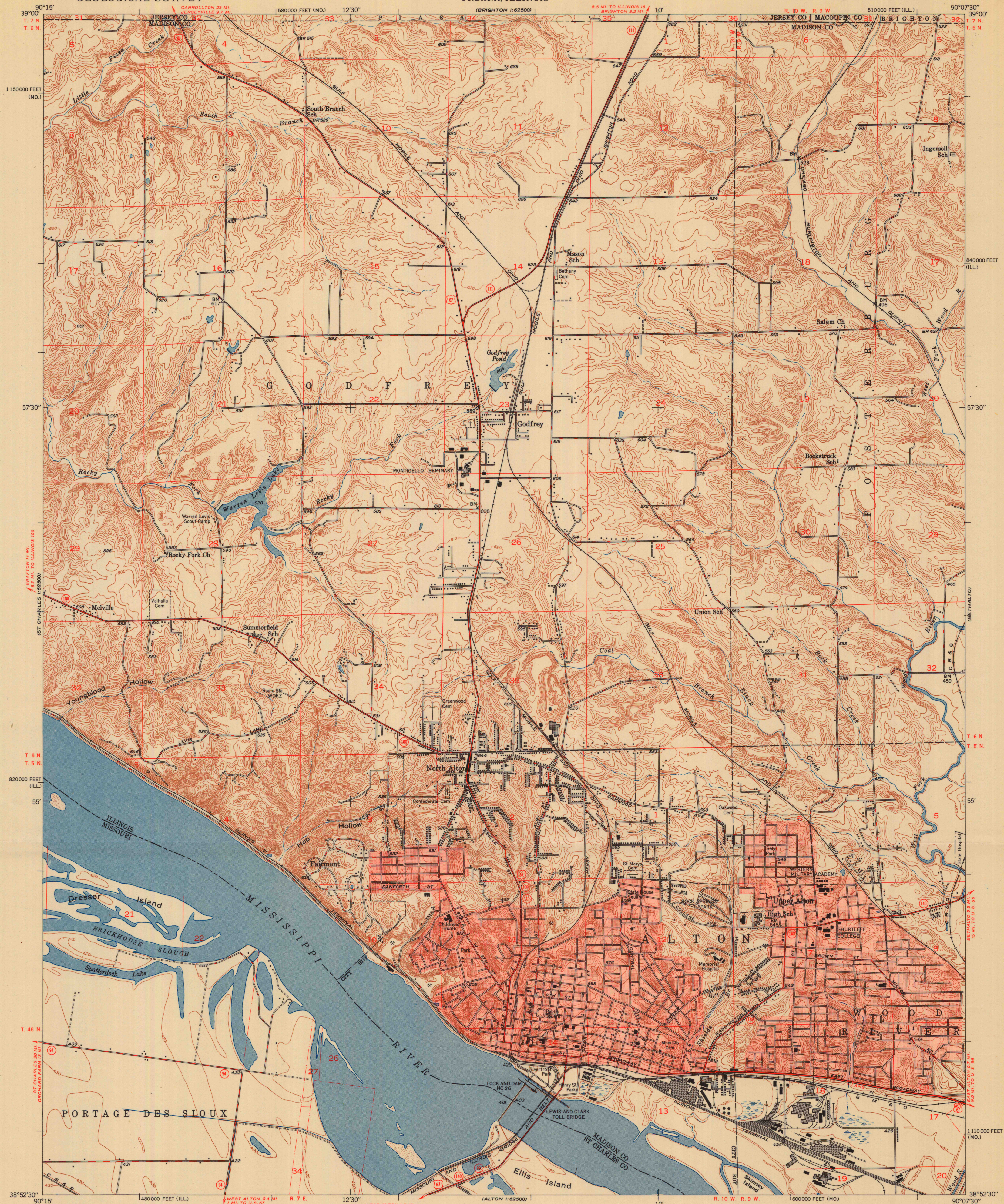


UNITED STATES  
DEPARTMENT OF THE INTERIOR  
GEOLOGICAL SURVEY

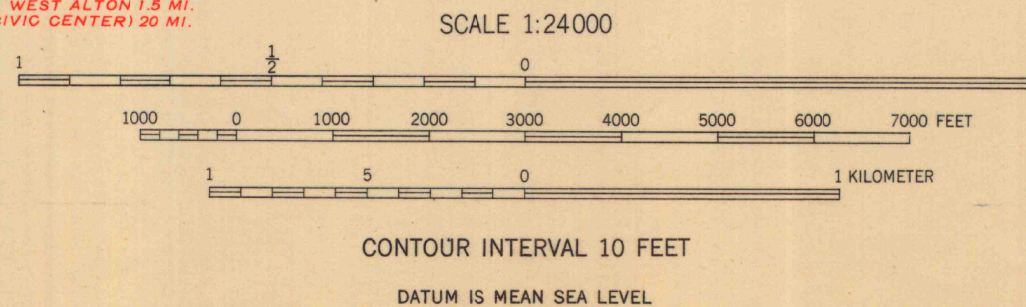
STATE OF ILLINOIS  
ADLAI E. STEVENSON, GOVERNOR  
DEPARTMENT OF REGISTRATION AND EDUCATION  
NOBLE J. PUFFER, DIRECTOR  
GEOLOGICAL SURVEY DIVISION, M. M. LEIGHTON, CHIEF  
URBANA, ILLINOIS

ALTON QUADRANGLE  
ILLINOIS-MISSOURI  
7.5 MINUTE SERIES (TOPOGRAPHIC)  
NW 1/4 ALTON 15' QUADRANGLE



Mapped, edited, and published by the Geological Survey  
Control by Mississippi River Commission,  
USGS and USC&GS  
Topography by multiplex methods from aerial photographs  
taken 1945, and by plane-table surveys 1947-1948  
Field check 1947-1948  
Polyconic projection. 1927 North American datum  
10,000-foot grids based on Illinois coordinate system,  
west zone and Missouri coordinate system, east zone  
Red tint indicates areas in which only  
landmark buildings are shown

TRUE NORTH  
MAGNETIC NORTH  
APPROXIMATE MEAN  
DECLINATION, 1948



THIS MAP COMPLIES WITH NATIONAL MAP ACCURACY STANDARDS  
FOR SALE BY U. S. GEOLOGICAL SURVEY, WASHINGTON 25, D. C.  
AND BY THE STATE GEOLOGICAL SURVEY, URBANA, ILLINOIS  
A FOLDER DESCRIBING TOPOGRAPHIC MAPS AND SYMBOLS IS AVAILABLE ON REQUEST

ROAD CLASSIFICATION  
HARD-SURFACE ALL WEATHER ROADS DRY WEATHER ROADS  
Heavy-duty... 3 LANE LANE Improved dirt...  
Medium-duty... 2 LANE LANE Unimproved dirt...  
Loose-surface, graded, or narrow hard-surface...  
U. S. Route State Route

UNIVERSITY OF WISCONSIN  
Department of Geography

ALTON, ILL.-MO.  
NW 1/4 ALTON 15' QUADRANGLE  
N3852.5-W9007.5/7.5

EDITION OF 1950