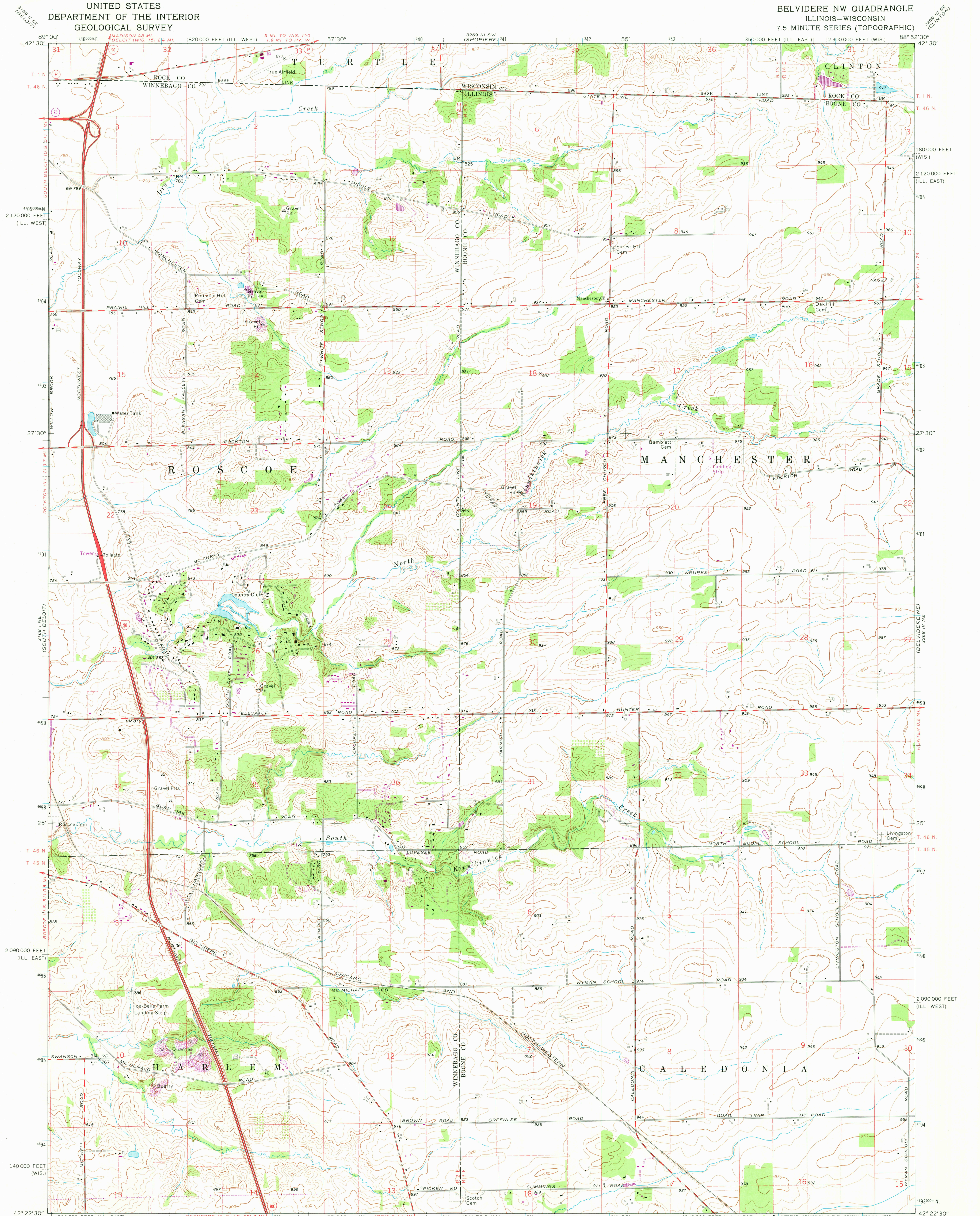


UNITED STATES
DEPARTMENT OF THE INTERIOR
GEOLOGICAL SURVEY

BELVIDERE NW QUADRANGLE
ILLINOIS-WISCONSIN
7.5 MINUTE SERIES (TOPOGRAPHIC)



Maped, edited, and published by the Geological Survey

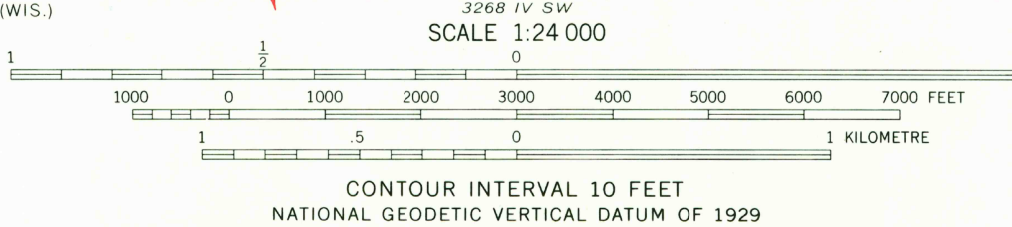
Control by USGS and USC&GS

Topography by photogrammetric methods from aerial photographs taken 1966. Field checked 1970

Polyconic projection. 1927 North American datum. 10,000-foot grids based on Illinois coordinate system, east and west zones and Wisconsin coordinate system, south zone. 1000-metre Universal Transverse Mercator grid ticks, zone 16, shown in blue.

Fine red dashed lines indicate selected fence and field lines where generally visible on aerial photographs. This information is unchecked.

Revisions shown in purple compiled from aerial photographs taken 1975. This information not field checked.



THIS MAP COMPLIES WITH NATIONAL MAP ACCURACY STANDARDS FOR SALE BY U.S. GEOLOGICAL SURVEY, RESTON, VIRGINIA 22092
STATE GEOLOGICAL SURVEY, URBANA, ILLINOIS 61801
AND WISCONSIN GEOLOGICAL AND NATURAL HISTORY SURVEY, MADISON, WISCONSIN 53706
A FOLDER DESCRIBING TOPOGRAPHIC MAPS AND SYMBOLS IS AVAILABLE ON REQUEST

ROAD CLASSIFICATION
Primary highway, all weather, hard surface
Secondary highway, all weather, hard surface
Unimproved road, fair or dry weather
Interstate Route
State Route



BELVIDERE NW, ILL.-WIS.
N4222.5-W8852.5/7.5

USGS
Historical File
Topographic Division

1970
PHOTOREVISED 1975
AMS 3268 IV NW-SERIES W863

SEP 26 1977