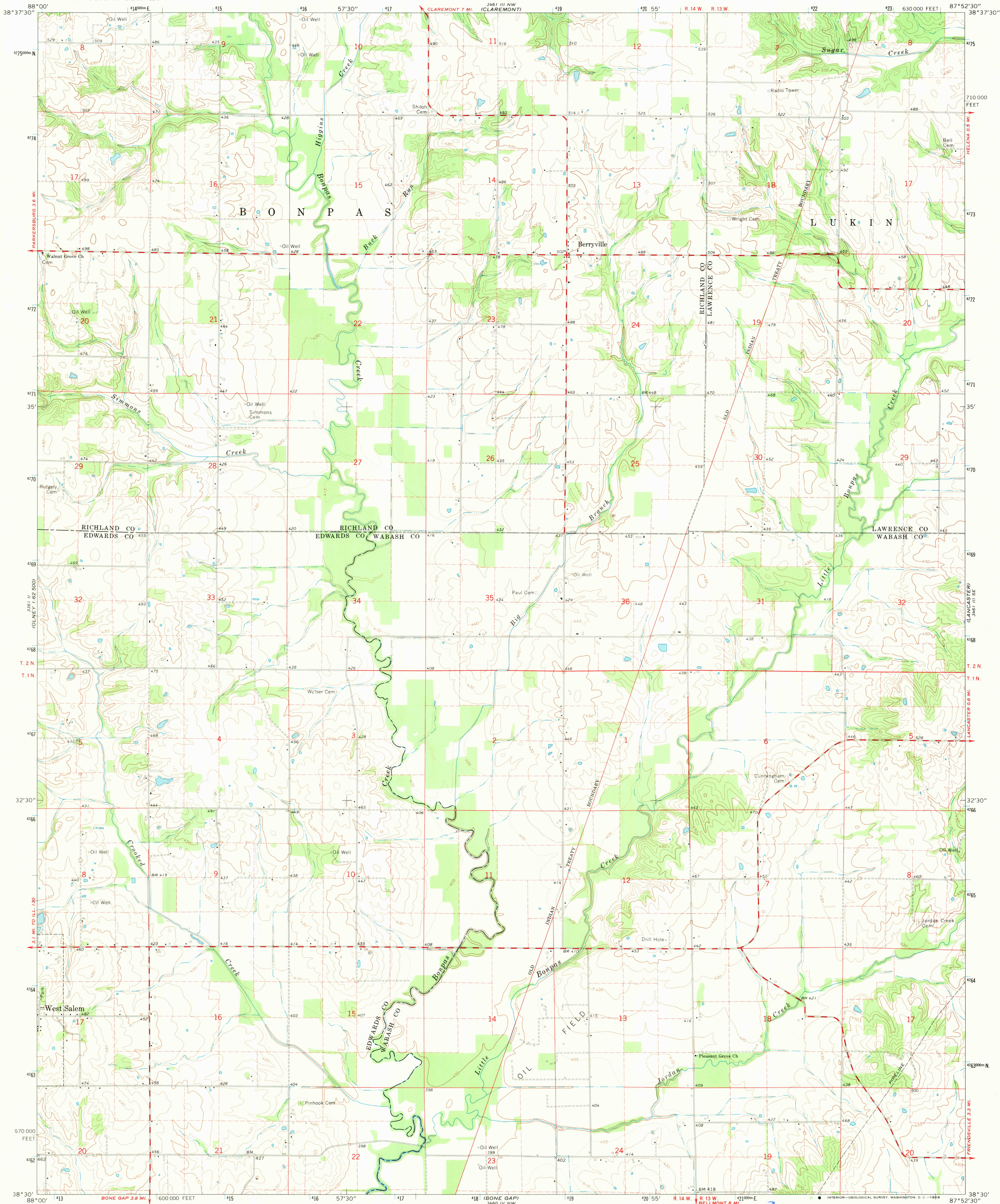


UNITED STATES  
DEPARTMENT OF THE INTERIOR  
GEOLOGICAL SURVEY

BERRYVILLE QUADRANGLE  
ILLINOIS  
7.5 MINUTE SERIES (TOPOGRAPHIC)  
SW/4 SUMNER 15' QUADRANGLE



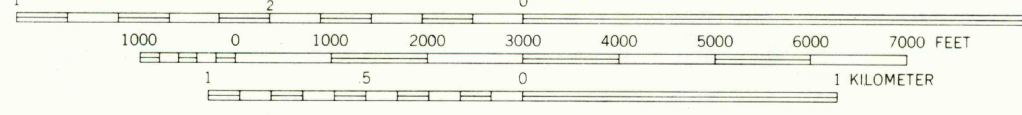
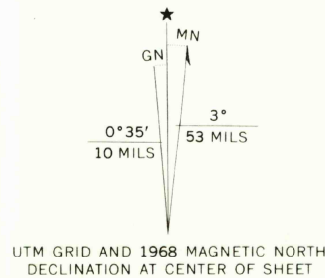
Mapped, edited, and published by the Geological Survey

Control by USGS and USC&GS

Topography by photogrammetric methods from aerial photographs taken 1965-66. Field checked 1968

Polyconic projection. 1927 North American datum  
10,000-foot grid based on Illinois coordinate system, east zone  
1000-meter Universal Transverse Mercator grid ticks,  
zone 16, shown in blue

Fine red dashed lines indicate selected fence and field lines where generally visible on aerial photographs. This information is unchecked



CONTOUR INTERVAL 10 FEET  
DOTTED LINES REPRESENT 5-FOOT CONTOURS  
DATUM IS MEAN SEA LEVEL

THIS MAP COMPLIES WITH NATIONAL MAP ACCURACY STANDARDS  
FOR SALE BY U. S. GEOLOGICAL SURVEY, WASHINGTON, D. C. 20242  
AND BY THE STATE GEOLOGICAL SURVEY, URBANA, ILLINOIS 61801  
A FOLDER DESCRIBING TOPOGRAPHIC MAPS AND SYMBOLS IS AVAILABLE ON REQUEST

USGS  
Historical File  
Topographic Division



U.S.G.S.  
FILE COPY  
TOPOGRAPHIC DIVISION

ROAD CLASSIFICATION  
Medium-duty ———— Light-duty ————  
Unimproved dirt ————

BERRYVILLE, ILL.  
SW/4 SUMNER 15' QUADRANGLE  
N3830—W8752.5/7.5

1968

AMS 3461 III SW—SERIES V863

2500  
NOV 24 1969