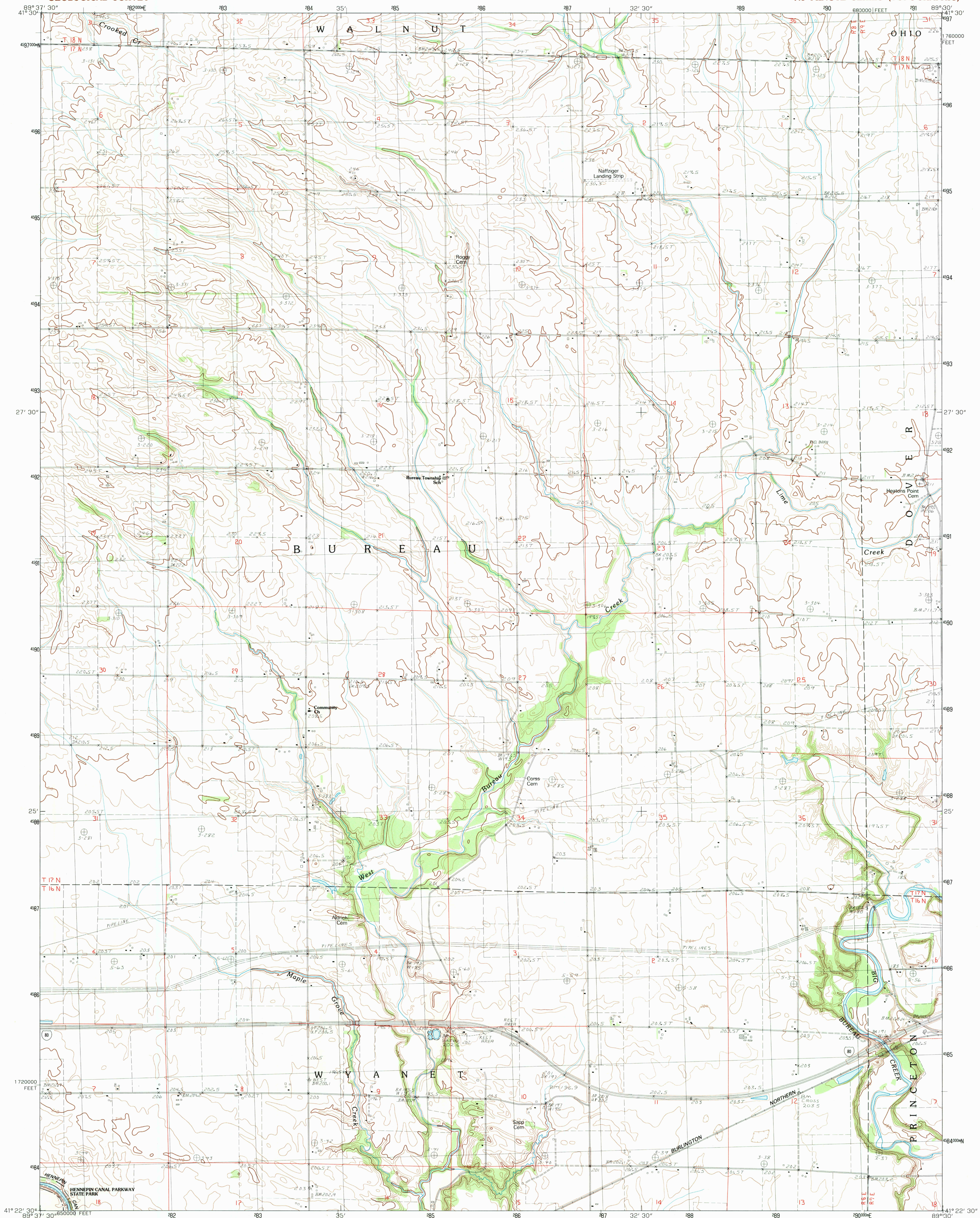


UNITED STATES  
DEPARTMENT OF THE INTERIOR  
GEOLOGICAL SURVEY

BUDA NE QUADRANGLE  
ILLINOIS-BUREAU CO.  
7.5 MINUTE SERIES (TOPOGRAPHIC)



PRODUCED BY THE UNITED STATES GEOLOGICAL SURVEY  
CONTROL BY: USGS AND NOS/NOAA  
COMPILED FROM AERIAL PHOTOGRAPHS TAKEN: 1977-78  
FIELD CHECKED: 1980. MAP EDITED: 1983  
PROJECTION: UNIVERSAL TRANSVERSE MERCATOR  
GRID: 1000-METER UNIVERSAL TRANSVERSE MERCATOR  
10,000-FOOT STATE GRID TICS: ILLINOIS, WEST ZONE  
UTM GRID DECLINATION: 1°42' WEST  
1983 MAGNETIC NORTH DECLINATION: 1°30' EAST  
VERTICAL DATUM: NATIONAL GEODETIC VERTICAL DATUM OF 1929  
HORIZONTAL DATUM: 1927 NORTH AMERICAN DATUM  
To place on the predicted North American Datum of 1983  
move the projection lines as shown by dashed corner ticks  
(2 meters north and 8 meters east)  
There may be private inholdings within the boundaries of any  
Federal and State reservations shown on this map

PROVISIONAL MAP  
Produced from original  
manuscript drawings. Information  
shown as of date of  
field check.

SCALE 1:24 000  
1 000 0 1000 2000 3000 4000 5000 6000 7000 8000 9000 10 000  
KILOMETERS  
MILES  
CONTOUR INTERVAL 3 METERS  
SUPPLEMENTARY CONTOUR INTERVAL 1.5 METERS  
CONTROL ELEVATIONS SHOWN TO THE NEAREST 0.1 METER  
OTHER ELEVATIONS SHOWN TO THE NEAREST 0.5 METER  
To convert meters to feet multiply by 3.2808  
To convert feet to meters multiply by .3048

THIS MAP COMPLIES WITH NATIONAL MAP ACCURACY STANDARDS  
FOR SALE BY U.S. GEOLOGICAL SURVEY, RESTON, VIRGINIA 22092  
AND THE STATE GEOLOGICAL SURVEY, CHAMPAIGN, ILLINOIS 61820

1	2	3	1	New Bedford
2	3	4	2	Walnut
3	4	5	3	Ohio
4	5	6	4	Manlius
5	6	7	5	Princeton North
6	7	8	6	Buda
7	8	9	7	Wyanet
8	9	10	8	Princeton South

ADJOINING 7.5 QUADRANGLE NAMES  
CONTOURS AND ELEVATIONS  
IN METERS

ROAD LEGEND  
Improved Road  
Unimproved Road  
Trail  
Interstate Route  
U. S. Route  
State Route

BUDA NE, ILLINOIS  
PROVISIONAL EDITION 1983

41089-D5-TM-024