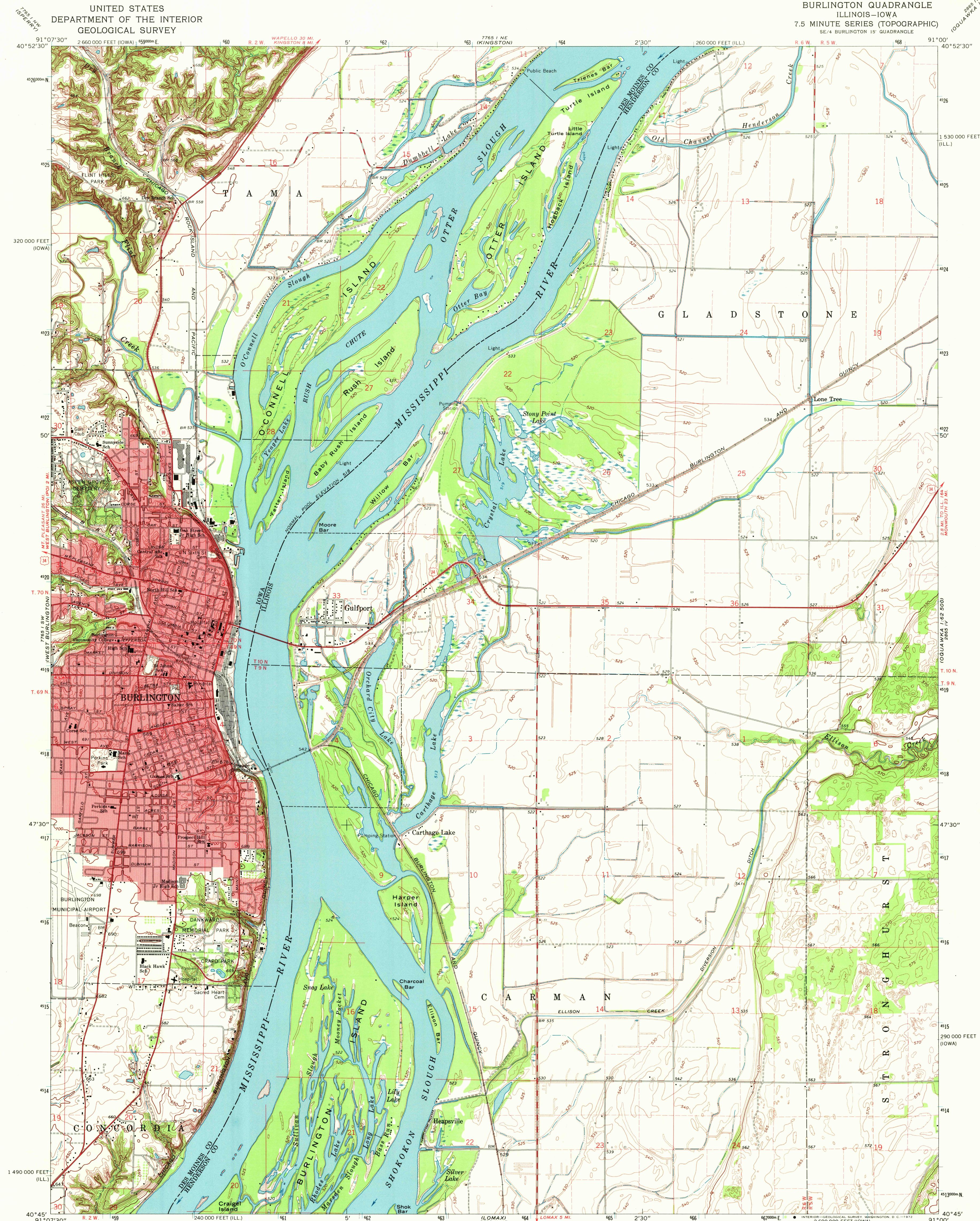


UNITED STATES
DEPARTMENT OF THE INTERIOR
GEOLOGICAL SURVEY

BURLINGTON QUADRANGLE
ILLINOIS-IOWA
7.5 MINUTE SERIES (TOPOGRAPHIC)
SE/4 BURLINGTON 15' QUADRANGLE



Mapped, edited, and published by the Geological Survey
Control by USGS and USCGS
Topography by photogrammetric methods from aerial
photographs taken 1962 and planetable surveys 1964
Polyconic projection. 1927 North American datum
10,000-foot grids based on Illinois coordinate system, west zone, and
Iowa coordinate system, south zone
1000-meter Universal Transverse Mercator grid ticks,
zone 15, shown in blue
Red tint indicates area in which only landmark buildings are shown
Fine red dashed lines indicate selected fence and field lines where
generally visible on aerial photographs. This information is unchecked

UTM GRID AND 1984 MAGNETIC NORTH
DECLINATION AT CENTER OF SHEET
171° 23' 11" W
5° 59' 11" N

SCALE 1:24,000
1 000 0 1000 2000 3000 4000 5000 6000 7000 FEET
1 0 1 2 3 4 5 6 7 8 9 10 KILOMETER
CONTOUR INTERVAL 10 FEET
DOTTED LINES REPRESENT 5-FOOT CONTOURS
DATUM IS MEAN SEA LEVEL

THIS MAP COMPLIES WITH NATIONAL MAP ACCURACY STANDARDS
FOR SALE BY U.S. GEOLOGICAL SURVEY, DENVER, COLORADO 80225 OR WASHINGTON, D.C. 20242,
STATE GEOLOGICAL SURVEY, URBANA, ILLINOIS 61801
AND IOWA GEOLOGICAL SURVEY, IOWA CITY, IOWA 52240,
A FOLDER DESCRIBING TOPOGRAPHIC MAPS AND SYMBOLS IS AVAILABLE ON REQUEST



ROAD CLASSIFICATION
Heavy-duty ————— Light-duty —————
Medium-duty ————— Unimproved dirt —————
U.S. Route ———— State Route ————

USGS
HISTORICAL FILE
TOPOGRAPHIC DIVISION

BURLINGTON, ILL.-IOWA
SE/4 BURLINGTON 15' QUADRANGLE
N4045-W9100/7.5
1964
AMS 7765 I SE-SERIES V876

FILE COPY
APR 4 - 1972
MAP INFORMATION OFFICE
GEOLOGICAL SURVEY