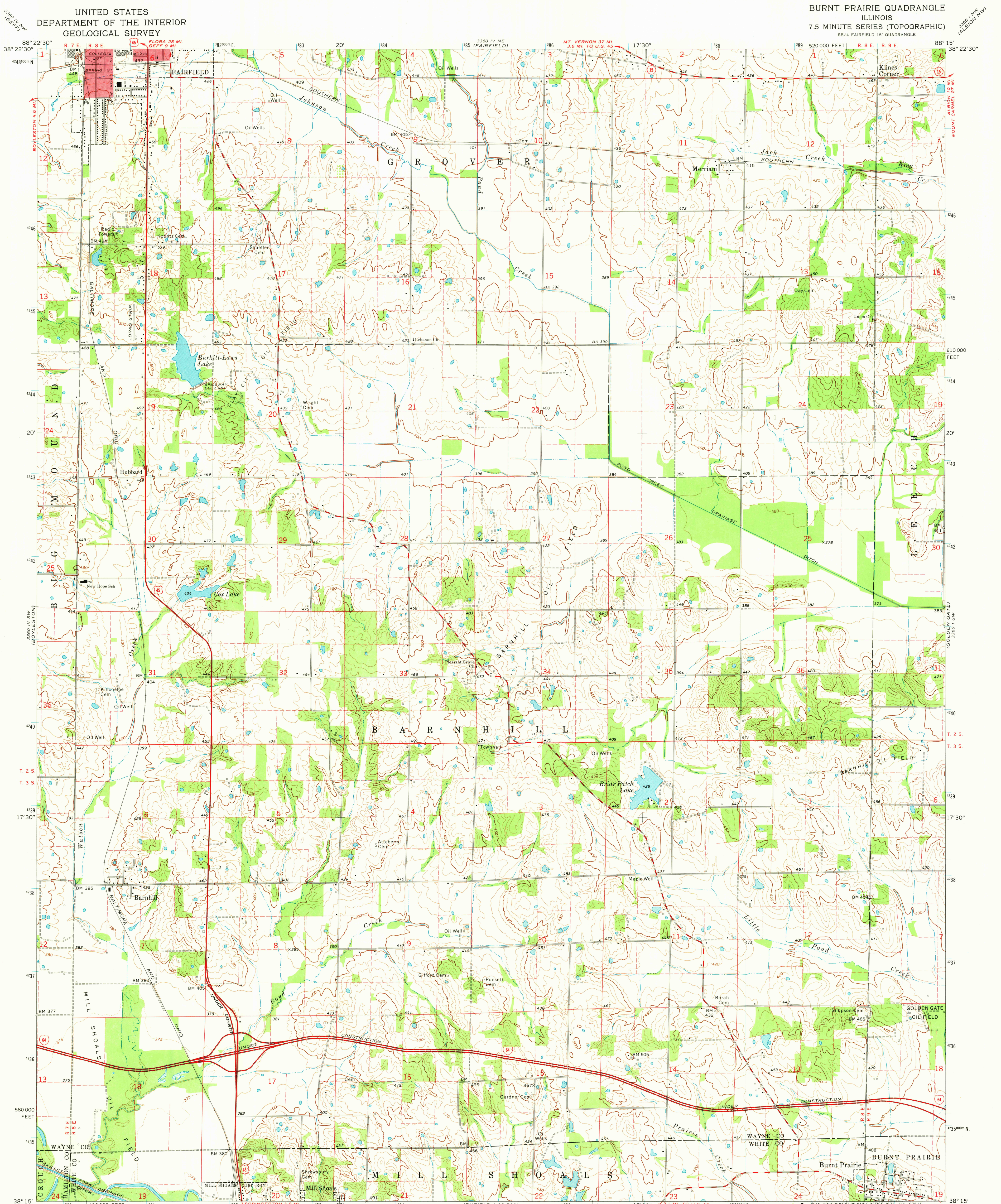


BURNT PRAIRIE QUADRANGLE
ILLINOIS
7.5 MINUTE SERIES (TOPOGRAPHIC)
SE/4 FAIRFIELD 15 QUADRANGLE



Mapped, edited, and published by the Geological Survey
Control by USGS and USC&GS
Topography by photogrammetric methods from aerial photographs taken 1970. Field checked 1971
Polyconic projection. 1927 North American datum
10,000-foot grid based on Illinois coordinate system, east zone
1000-meter Universal Transverse Mercator grid ticks, zone 16, shown in blue
Red tint indicates areas in which only landmark buildings are shown
Fine red dashed lines indicate selected fence and field lines where generally visible on aerial photographs. This information is unchecked

SCALE 1:24 000

CONTOUR INTERVAL 10 FEET
DOTTED LINES REPRESENT 5-FOOT CONTOURS
DATUM 1958 MEAN SEA LEVEL

U.T.M. GRID AND 1973 MAGNETIC NORTH DECLINATION AT CENTER OF SHEET

THIS MAP COMPLIES WITH NATIONAL MAP ACCURACY STANDARDS
FOR SALE BY U. S. GEOLOGICAL SURVEY, WASHINGTON, D. C. 20242
AND BY THE STATE GEOLOGICAL SURVEY, URBANA, ILLINOIS 61801
A FOLDER DESCRIBING TOPOGRAPHIC MAPS AND SYMBOLS IS AVAILABLE ON REQUEST

ROAD CLASSIFICATION

- Primary highway, hard surface
- Secondary highway, hard surface
- Light-duty road, hard or improved surface
- Unimproved road
- Interstate Route
- U. S. Route
- State Route

USGS HISTORICAL FILE TOPOGRAPHIC DIVISION

BURNT PRAIRIE, ILL.
SE/4 FAIRFIELD 15 QUADRANGLE
N3815-W8815/7.5
1971
AMS 3360 IV SE-SERIES V863

FAIRFIELD 162 5000
3360 IV SW
3360 III

3360 I NW
3360 I SW
3360 I SE
3360 I NE
3360 I NW
3360 I SW
3360 I SE
3360 I NE