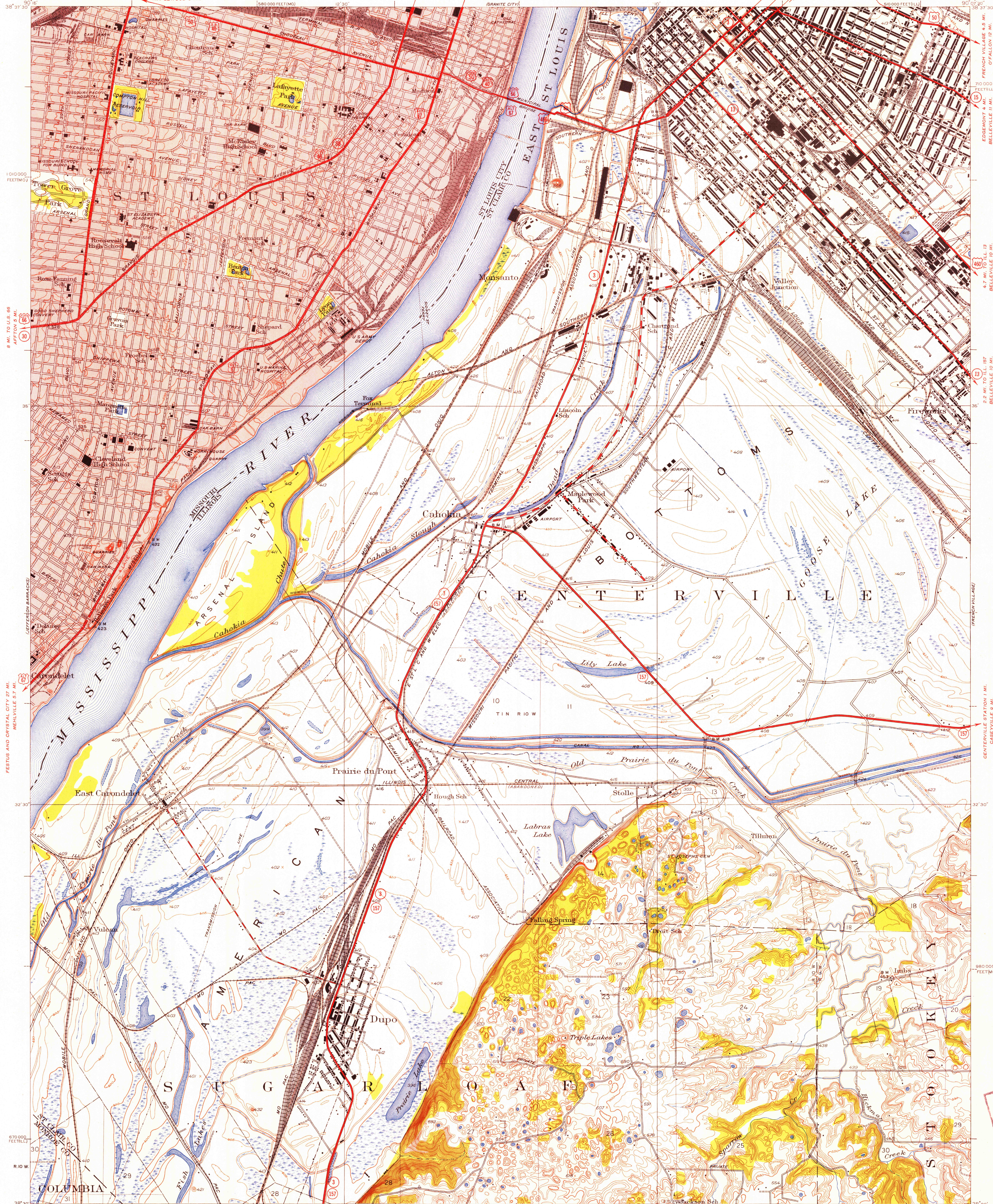


UNITED STATES  
DEPARTMENT OF THE INTERIOR  
GEOLOGICAL SURVEY  
10 MI. TO U.S. 61-66  
MAPLEWOOD 5 MI.

STATE OF MISSOURI  
GEOLOGICAL SURVEY AND WATER RESOURCES  
EDWARD L. CLARK, STATE GEOLOGIST

STATE OF ILLINOIS  
DEPARTMENT OF REGISTRATION AND EDUCATION  
URBANA, ILLINOIS

ILLINOIS-MISSOURI  
CAHOKIA QUADRANGLE  
50,000 FEET (1:50,000)



Topography by F.A. Danforth, J.B. Leavitt, F.L. Whaley, Daniel Kennedy, M.J. Harden, J.A. Shumate, and J.T. Schultz  
Culture and drainage in part compiled from aerial photographs taken by Air Corps U.S. Army  
Surveyed in 1929 and 1933  
Culture revised in part 1949  
Red tint indicates area in which only landmark buildings are shown

COLUMBIA 4.7 MI.  
WATERLOO 13 MI.



CONTOUR INTERVALS IN ILLINOIS 5 AND 10 FEET CHANGING ON THE 420 FOOT CONTOUR  
CONTOUR INTERVAL IN MISSOURI 10 FEET  
DATUM IS MEAN SEA LEVEL

FOR SALE BY U.S. GEOLOGICAL SURVEY, FEDERAL CENTER, DENVER, COLORADO OR WASHINGTON 25, D.C.  
BY THE STATE GEOLOGICAL SURVEY, URBANA, ILLINOIS  
AND BY THE MISSOURI GEOLOGICAL SURVEY, ROLLA, MISSOURI  
A FOLDER DESCRIBING TOPOGRAPHIC MAPS AND SYMBOLS IS AVAILABLE ON REQUEST

ROAD CLASSIFICATION  
Heavy-duty 4 LANE 16 LANE  
Medium-duty 4 LANE 16 LANE  
Light duty  
Unimproved dirt  
U.S. Route  
State Route

USGS  
Historical File  
Topographic Division  
FILE COPY  
1949

CAHOKIA, ILL.-MO.  
N3830-W80075/75  
1949

AUG 3 1954  
5395