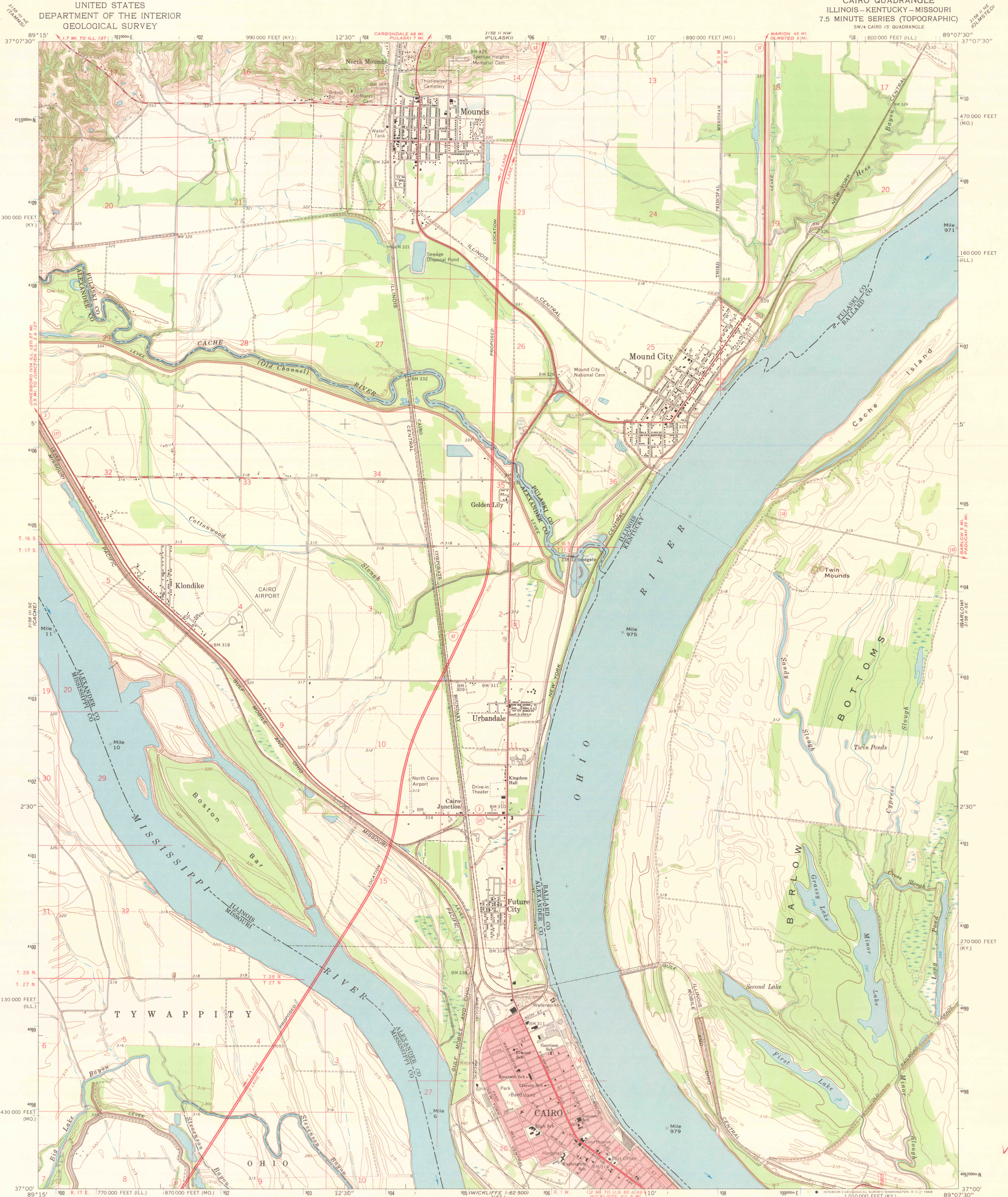


UNITED STATES
DEPARTMENT OF THE INTERIOR
GEOLOGICAL SURVEY

CAIRO QUADRANGLE
ILLINOIS-KENTUCKY-MISSOURI
7.5 MINUTE SERIES (TOPOGRAPHIC)
SW/4 CAIRO 15' QUADRANGLE



Mapped, edited, and published by the Geological Survey. Kentucky area mapped in cooperation with Kentucky Geological Survey. Control by USGS and USC&GS. Topography of Illinois and Missouri areas by photogrammetric methods from aerial photographs taken 1965 and planimetric surveys 1967. Planimetry of Kentucky area by photogrammetric methods from aerial photographs taken 1952. Topography by planimetric surveys 1954. Revised 1967. Polyconic projection. 1927 North American datum. 10,000-foot grids based on Illinois coordinate system, west zone. Kentucky coordinate system, south zone, and Missouri coordinate system, east zone. 1000-meter Universal Transverse Mercator grid ticks, zone 16, shown in blue. The Kentucky-Illinois State boundary as shown represents the approximate position of the low waterline as determined from U. S. Corps of Engineers, Ohio River Charts, surveyed 1911-1912, and supplementary information. Red tint indicates area in which only landmark buildings are shown. Fine red dashed lines indicate selected fence and field lines where generally visible on aerial photographs. This information is unchecked.

SCALE 1:24,000
CONTOUR INTERVAL 5 FEET
DATUM IS MEAN SEA LEVEL
THIS MAP COMPLIES WITH NATIONAL MAP ACCURACY STANDARDS
FOR SALE BY U. S. GEOLOGICAL SURVEY, DENVER, COLORADO 80225, OR WASHINGTON, D. C. 20242.
STATE GEOLOGICAL SURVEY, URBANA, ILLINOIS 61801.
KENTUCKY GEOLOGICAL SURVEY, LEXINGTON, KENTUCKY 40506.
KENTUCKY DEPARTMENT OF COMMERCE, FRANKFORT, KENTUCKY 40601.
AND MISSOURI GEOLOGICAL SURVEY, ROLLA, MISSOURI 65401.
A FOLDER DESCRIBING TOPOGRAPHIC MAPS AND SYMBOLS IS AVAILABLE ON REQUEST.

ROAD CLASSIFICATION
Heavy-duty ——— Light-duty ———
Medium-duty ——— Unimproved dirt ———
Interstate Route U. S. Route State Route

CAIRO, ILL. - KY. - MO.
SW/4 CAIRO 15' QUADRANGLE
N3700-W8907.5/7.5
1967
AMS 3158 II SW-SERIES V863

FILE COPY
DEC 13 1968
MAP INFORMATION OFFICE