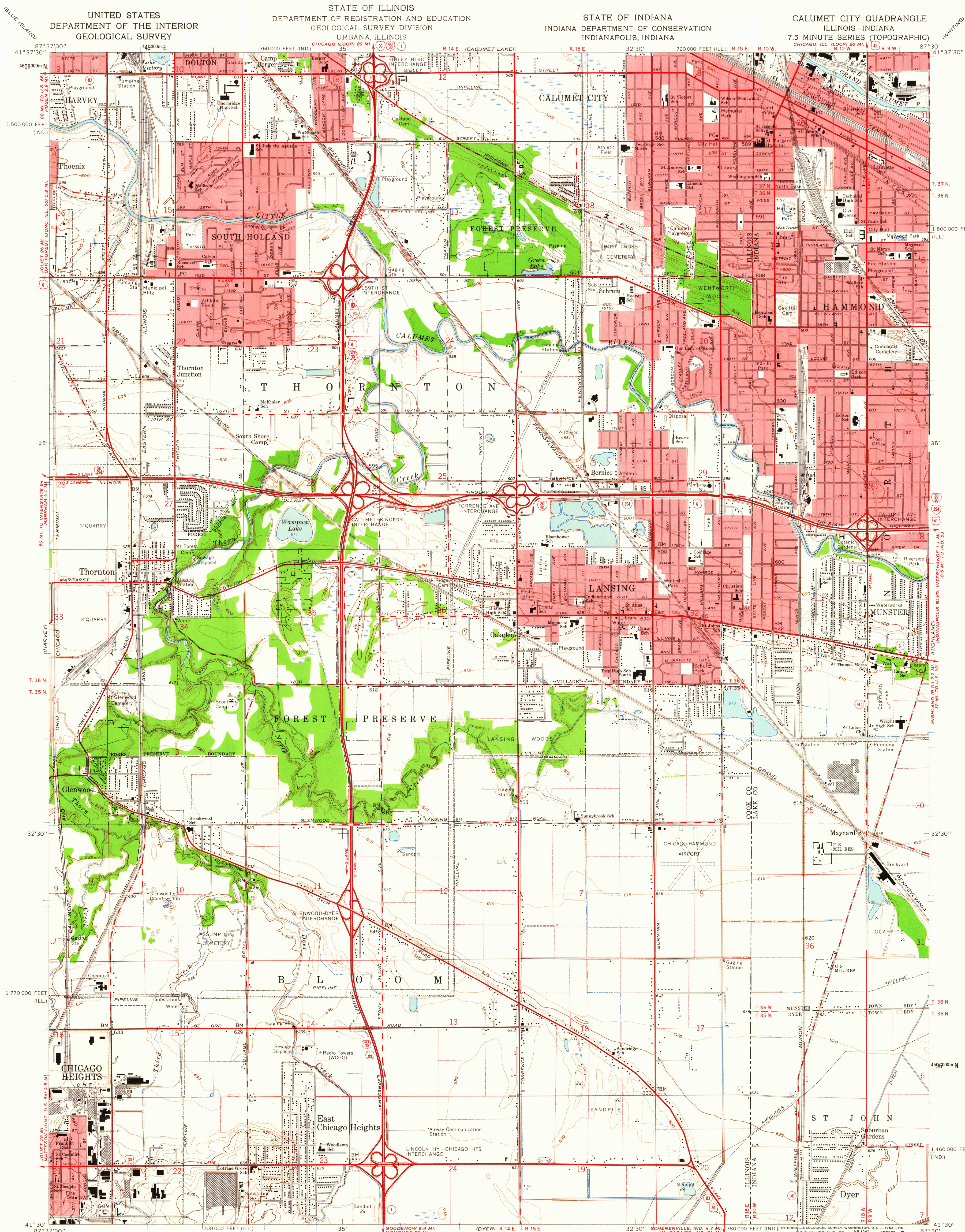


UNITED STATES
DEPARTMENT OF THE INTERIOR
GEOLOGICAL SURVEY

STATE OF ILLINOIS
DEPARTMENT OF REGISTRATION AND EDUCATION
GEOLOGICAL SURVEY DIVISION
URBANA, ILLINOIS

STATE OF INDIANA
INDIANA DEPARTMENT OF CONSERVATION
INDIANAPOLIS, INDIANA

CALUMET CITY QUADRANGLE
ILLINOIS-INDIANA
7.5 MINUTE SERIES (TOPOGRAPHIC)



Mapped, edited, and published by the Geological Survey
Control by USGS, USC&GS, and Cook County Highway Department
Culture and drainage in part compiled from aerial photographs
Topography by planetable surveys 1926. Revised 1960
Polyconic projection. 1927 North American datum
10,000-foot grids based on Illinois coordinate system, east zone
and Indiana coordinate system, west zone
1000-meter Universal Transverse Mercator grid ticks,
zone 16, shown in blue
Fine red dashed lines indicate selected fence and field lines where
generally visible on aerial photographs. This information is unchecked
Red tint indicates areas in which only landmark buildings are shown

APPROXIMATE MEAN
DECLINATION, 1960

SCALE 1:24,000
1:1000 1:2000 3000 4000 5000 6000 7000 FEET
1 KILOMETER
CONTOUR INTERVAL 5 FEET
DATUM IS MEAN SEA LEVEL

THIS MAP COMPLIES WITH NATIONAL MAP ACCURACY STANDARDS
FOR SALE BY U. S. GEOLOGICAL SURVEY, WASHINGTON, D. C.,
THE STATE GEOLOGICAL SURVEY, URBANA, ILLINOIS,
AND INDIANA DEPARTMENT OF CONSERVATION, INDIANAPOLIS, INDIANA.
A FOLDER DESCRIBING TOPOGRAPHIC MAPS AND SYMBOLS IS AVAILABLE ON REQUEST

USGS
Historical File
Topographic Division



ROAD CLASSIFICATION
Heavy-duty ——— Light-duty ———
Medium-duty ——— Unimproved dirt ———
Interstate Route — U.S. Route — State Route

CALUMET CITY, ILL.-IND.
N4130—W8730/7.5

1960

MAY - 7 1962

3500